

Cleveland Chapter of The American Society of Plumbing Engineers
May 2020

CHAPTER OFFICERS

President

JOHN VARGA, P.E.
Scheerer Buckley Mayfield, Inc.
Email: jvarga@sbmce.com
(330) 526-2715

V.P. Technical

DIETER HAUSMANN, P.E. CPD, LEED AP
T/E/S Engineering
Email: kdhausmann@tesengineering.com
(440) 614-0318

V.P. Legislative

MARLON WRIGHT P.E., CPD
T/E/S Engineering
Email: mwright@tesengineering.com
(440) 871-2410

V.P. Membership

FRANK MASTROIANNI JR.
Mastroianni & Associates, Inc.
Email: frankjr@mastroiannihvac.com
(440) 786-1100

Treasurer

KEVIN NOBLE, P.E., LEED AP
Scheerer Buckley Mayfield, Inc.
Email: knoble@sbmce.com
(330) 526-2714

Administrative Secretary

DAN EVANS, P.E., CPD, GPD
HEI Engineering Group, Inc.
Email: evans@hei-ohio.com
(330) 262-0042

Corresponding Secretary

KIM METZGER
Disney McLane & Associates
Email: kimm@disney-mclane.com
(216) 406-7974

Affiliate Liaison

KATHY KIRSCHNICK
Campbell Equipment Company
Email: kkirschnick123@gmail.com
(216) 904-6656

AYP Group Liaison

NICK TABAR, CPDT
Karpinski Engineering
Email: ntabar@karpinskieng.com
(216) 391-3700

Newsletter Editor

MICHAEL DRAB
Thorson Baker & Associates, Inc.
Email: mdrab@thorsonbaker.com
(330) 659-6688

From the President:



I would like to thank Craig Boyce with Water Control Systems for being our guest speaker at the April Virtual Online Technical Meeting on the topic; Engineered Solutions to Design Out Legionella.

Election Day is May 13, 2020! If you are interested in becoming an ASPE Cleveland Chapter Officer, please let us know so that your name can be added to the ballot!

The May Technical Session will be on the topic; A Guide for Replacing Your Aging Pressure Boosting System, presented by Reece Robinson, with Grundfos Pumps Corporation.

The May 13, 2020 Lunch Meeting will be a Virtual Online Meeting.

12:00 – 1:00 PM Virtual Online Meeting

FREE to all members and non-members!

Please refer to the email for specific details and registration information.

Let us know if there are any specific topics you would like to see our chapter sponsor. We are always looking for new ideas. Remember, without membership and participation, there is no local chapter.

Stay Healthy and Safe!

Regards,
John A. Varga, P.E.
President, ASPE Cleveland Chapter

The International Organization for
Plumbing System Design Professionals

ASPE is dedicated to the advancement of the science of plumbing engineering, the professional growth and advancement of its members and the health, welfare and safety of the public.

[Learn More About ASPE](#)

**2019-2020 ASPE Meeting/Plumbing Class Schedule
May 2020**

<u>Date – Time – Place</u>	<u>Topic</u>	<u>Speaker</u>	<u>Exhibitors</u>
September 11, 2019 – 6:00 PM Cleveland Yachting Club	Clam Bake Topic – Social Event ASPE Cleveland Chapter	N/A	N/A
October 15, 2019 – 11:30 AM Harry's Steakhouse Cost: \$20.00	Everyone Communicates, Few Connect This is a joint meeting with ASHRAE	Karine Leblanc US Air Conditioning Distributors ASHRAE Distinguished Lecturer	TBD
November 13, 2019 – 11:30 AM Harry's Steakhouse Cost: \$20.00	Cross Connection Control & Mitigating RPZ Discharge	Kim Metzger Disney McLane & Associates	Disney McLane
December 11, 2019 – 11:30 AM Harry's Steakhouse Cost: \$20.00	Fire Pump Room Layout	Greg Trombold Trombold Equipment	Trombold Equipment
January 8, 2020 – 11:30 AM Harry's Steakhouse Cost: \$20.00	Greasy Waste Flow Maintenance	Will Loach – Chromalox Tim Morrissey – Midwest Spec	Midwest Spec
February 12, 2020 – 11:30 AM Harry's Steakhouse Cost: \$20.00	Ohio Plumbing Codes – Ins and Outs This is also our Mini-Trade Show!!	Lance Begoon Ohio Department of Commerce Plan Review	A big Thank You to all the vendors that participated to make our trade show possible!
March 11, 2020 – 5:30 PM Harry's Steakhouse Cost: \$20.00	The Art Of Water: Solving Water Delivery Challenges	Jim Montgomery - Technical Field Support Specialist for Elkay	Elkay
April 8, 2020 – 12:00 PM Virtual Online Meeting Cost: N/A	Engineered Solutions to Design Out Legionella	Craig Boyce, President of Water Control Systems	N/A
May 13, 2020 – 12:00 PM Virtual Online Meeting Cost: N/A	A Guide for Replacing Your Aging Pressure Booster System <u>Note:</u> Chapter Board Elections this year will be taking place after the meeting.	Reece Robinson Grundfos Pumps Corporation	N/A

**2019-2020 ASPE Meeting/Plumbing Class Schedule
May 2020**

The above is the meeting/plumbing class schedule for the 2019-2020 ASPE year. Updated information will appear in subsequent newsletter issues. All meetings will be at Harry's Steakhouse, 5664 Old Brecksville Road, Independence unless otherwise indicated. The meeting/plumbing class, including dinner, is \$26.00. Reservations are required. A mini product show will be held before each meeting/plumbing class highlighting some of the materials discussed in class or products that will assist the engineer in understanding what they are designing or specifying. All plumbing classes will qualify for 0.1CEU hours and will assist in preparation for the ASPE CPD examination.

The following times will be enforced as strictly as possible.

Make your reservations a minimum of two days before the meeting/class and try to be on time.

Evening Seminars:

- Chapter Board Meeting 5:00 - 5:30 pm
- Sign-in / Meet and Greet / Vendor Product Displays 5:00 - 6:00 pm
- Dinner 6:00 - 6:30 pm
- Presentation 6:30 - 6:45 pm
- Vendor Product Displays 6:45 - 7:45 pm

Lunchtime Seminars:

- Mini Product Show 11:30 - 11:45 am
- Sign-In / Meet and Greet / Vendor Product Displays 11:45 - 12:00 pm
- Lunch 12:00 - 12:30 pm (Seminar to begin during lunch)
- Presentation 12:00 - 1:00pm



PRESIDENT

John Alex Varga, P.E.
(330) 526-2715

VICE PRESIDENT TECHNICAL

K. Dieter Hausmann, P.E., CPD, LEED AP
(440) 614-0318

VICE PRESIDENT LEGISLATIVE

Marlon Wright P.E., CPD
(440) 871-2410

VICE PRESIDENT MEMBERSHIP

Frank Mastroianni Jr.
(440) 786-1100

TREASURER

Kevin M. Noble, P.E., LEED AP
(330) 526-2714

ADMINISTRATIVE SECRETARY

Daniel R. Evans, P.E., CPD, GPD
(330) 262-0042

CORRESPONDENCE SECRETARY

Kim Metzger
(216) 406-7974

CHAPTER AYP LIAISON

Nick Tabar, CPDT
(216) 391-3700

CHAPTER AFFILIATE LIAISON/RESOURCE ENHANCE

Katherine Richards Kirschnick
(216) 904-6656

NEWSLETTER EDITOR

Michael Dennis Drab
(330) 659-6688

CHAPTER FUND RAISING

Katherine Richards Kirschnick
(216) 904-6656

CHAPTER EDUCATION CHAIR

K. Dieter Hausmann, P.E., CPD, LEED AP
(440) 614-0318

CHAPTER HISTORIAN

Craig J. Mc Dowell
(440) 808-2280

CHAPTER WEB MASTER

Michael Dennis Drab
(330) 659-6688

ASPE PRESIDENT

Carol Johnson, CPD, LEED AP, CFI, FASPE
(205) 527-8241

ASPE REGION 2 DIRECTOR

Keith D. Bush, CPD, GPD, CSI
(330) 672.9612

American Society of Plumbing Engineers
Chapters are not authorized to speak for the Society
CLEVELAND Chapter
PO Box 5962, Cleveland, OH 44101
www.clevelandaspe.org

Now Hiring: *Chapter Officers*

If you would like to volunteer and help out the organization that you have chosen to belong to, please read the brief description of available positions. If any of these positions is of interest to you, please contact John Varga at (330) 526-2715 to get your name on the Ballot! No experience is necessary. These positions will be filled at the ASPE virtual online meeting on Wednesday, May 13, 2020.

Committees (non-elected position): The Cleveland Chapter has numerous committees (Golf, Handbook and Membership) and Volunteering for Special Events.

Affiliate Liaison: Responsible for organizing activities and events to raise funds for the Chapter, advertising events and acting as the conduit between the Chapter Officers and the Chapter's Affiliates. Supports Vice President of Technical soliciting contacts to provide technical presentations, assists other board members and Newsletter Editor as necessary.

Newsletter Editor: (non-elected position): Responsible for organizing articles sent in from the Chapter Officers and publishing them in a monthly newsletter. Forward the newsletter and other miscellaneous announcements to our members as well as maintaining a current email / mail directory.

Corresponding Secretary: Responsible for all intra-chapter correspondence and communication with Society including forwarding copies of meeting minutes to Society and the Region Chairman.

Administrative Secretary: Responsible for keeping all meeting minutes and forwarding copies to all Chapter Officers.

Treasurer: Responsible for collecting, depositing and disbursing funds related to Chapter finances. Submit a monthly financial report to Chapter Officers and prepare year-end financial reports.

Vice President, Membership: Responsible for maintaining an accurate Chapter roster. Planning and implementing membership recruitment programs and membership retention.

Vice President, Legislative: Responsible for providing viewpoints on codes, ordinances, regulations and standards. Be a liaison to code writing, regulatory organizations and agencies as necessary.

Vice President, Technical: Responsible for planning, organizing and directing all technical activities and events of the Chapter. This also includes arranging the technical presentations for monthly Chapter meetings.

President: Responsible for providing the Chapter's leadership. Represent the Chapter at other professional society functions and wherever else attendance may be required. Organize and manage Chapter meetings, appoint Committee Chairpersons and maintain and grow interest in the Chapter.

THE BEST OFFENSE IS A GOOD DEFENSE.



Defend against the test of time and use cast iron soil pipe. Ensure success by knowing when and where to specify cast iron soil pipe. Did you know you can earn CEU's by taking a foundry tour to see how cast iron pipe is made or attend a local lunch and learn? **Contact your local technical services manager today.**



PLUMBING
TECHNICAL SERVICES

LEARN MORE:
mcwaneplumbingtechservices.com





NIBCO®
presssystem®

FIND YOUR FIT

**Choose from Over
500 Press Valve SKUs,
the Largest Offering
in the Industry**

- Options ranging from ½" – 4"
- Select from over 65 different valve configurations
- Our total system – valves, fittings and tools – comes with unparalleled service
- Experience the best customer service in the industry – as judged by our customers

**FIND YOUR FIT AT
NIBCO.COM/PRESS**

Amanda Miller | Area Sales Manager
614.634.2516 | millera2@nibco.com

Rick Daugherty | Area Sales Manager
304.281.3405 | daughtertyr@nibco.com

Dave Lazear | Sr. Engineered Systems Specialist
302.740.1202 | lazeard@nibco.com

Advance Thermal Corp.

Removable Insulation & Acoustic Covers

Aerco**Northern & Central Ohio**

Commercial Condensing Boilers

Commercial Condensing Water Heaters

Bell & Gossett

Balance Valves

*Automatic Flow Limiting**Manual Flow Limiting**Pressure Independent Control**Hydronic Specialties*

Centrifugal Pumps

*Base Mounted**Close Coupled**Double Suction**Horizontal Split Case**In-Line**Multi-Stage*

Heat Exchangers

*Shell & Tube**Plate Heat Exchangers**Replacement Tube Bundles*

Heat Transfer Packages

Hydronic Specialties

Pressure Booster Systems

Submersible Pumps

Variable Speed Systems

Vertical Turbine Pumps

Expansion/Compression Tanks

Bobco

Differential Gauge Kits

Bock Water Heater

Gas Fired Water Heater

Electric Water Heater

Oil Water Heater

Indirect Water Heater

Solar / Geo Thermal Water Heater

Electric Point of Use Water Heater

Burnham Commercial

Scotch & Firetube Boilers

Low Nox Boilers

Deareators & Boiler Accessories

Cemline Corp.

ASME Tanks

Boiler Blowdown Separators

Condensate Coolers

Hot Water Storage Heaters

Packaged Water Heaters

Replacement Tube Bundles

Stone Steel Lined Tanks

Unfired Steam Generators

Danfoss**Greater Toledo Area**

Variable Frequency Drives

Motor Soft Starters

Domestic Pump

Boiler Feed Systems

Condensate Return Pumps

Pressure Powered Pumps

Vacuum Pumps

Dow Heat Transfer Fluids

DOWTHERM™ SR-1 Ethylene Glycol

DOWFROST™ HD Propylene Glycol

Dri-Steam**Greater Toledo Area**

Steam Injection Humidifiers

Gas To Steam Humidifiers

Steam To Steam Humidifiers

Electric Steam Humidifiers

Evaporative Humidifiers

Ultrasonic Fog Humidifiers

Fluid Design Solutions

Boiler Plant Packages

Custom Mech. Room Pumping Pkgs

Packaged Snowmelt Solutions

Solar Pump Packages

Goulds / G&L Commercial

End Suction Pumps

Vertical Multi-stage

Pressure Booster Systems

Vortex Waste Water

Griswold Controls

Automatic Balance Valves

Manual Balance Valves

Pressure Independent Control Valves

Coil Hook-up Kits

Griswold Water Systems

Chemical Free Water Treatment

Centrifugal Separators

Sand Filter Systems

Heatfab**Northern & Central Ohio**

High Performance Chimneys & Vents

Hoffman Specialties

Steam Traps & Specialties

Condensate Return Pumps

Pressure Regulating Valves

Vacuum Pumps

Kadant Johnson

Pressure Powered Pumps

Laars Heating Systems

Residential / Commercial Boilers

Commercial Water Heaters

Commercial Pool Heaters

McDonnell & Miller

Boiler Safety Controls

Level Controls

Flow Switches

Metraflex Company

Flexible Pump Connectors

Expansion Joints & Guides

Non-slam Check Valves

Ball & Butterfly Valves

Miljoco

Pressure Gauges

Thermometers

Accessories

Niles Steel Tank

Glass Lined & Steel Storage Tanks

Peterson Equipment Co.

Pressure / Temperature Test Plugs

Rovanco

Pre-insulated Pipe

Containment Pipe

Solar Skies**Complete State of Ohio**

Solar Panel Collectors

Tower Tech Cooling Towers

High Efficiency Cooling Towers

HVAC Cooling Towers

Process Cooling Towers

Power Generation Cooling Towers

Vertiflo

Pedestal Mount – Sump Pumps

Base Mounted Pumps

Vertical Pumps

Webster Engineering**Greater Toledo Area**

Single & Dual Fuel Burners

Landfill Gas Burners

High Turndown Burners

Temp-A-Trim: Air Density Control System

Wessels Company

ASME & Glass Lined Storage Tanks

Glycol Fill Systems

Engineered Tanks

HIGHLY-TRAINED PLUMBERS

The Cleveland Plumbing Industry actively promotes the most rigorous and effective standards for our local contractors in the plumbing and mechanical industry.



We can embrace these high standards because our plumbing technicians receive the finest and most comprehensive training in the world - allowing our Northeast Ohio contractors to deliver the finest products, service and installation in only the safest of environments.



Working For Our Members:

- Plumbing Codes
- Medical Gas Training
- Back Flow Prevention
- Safety Services
- Labor Relations
- Education & Training
- Promotion
- Government Affairs

 **CLEVELAND
PLUMBING**
I N D U S T R Y

TOLL FREE: 855-CPI-4ALL (855-274-4255)

CLEVELANDPLUMBINGINDUSTRY.COM



T&S IS HERE >

T&S is proud to be a trusted name across a wide range of markets — staying at the forefront of today's evolving industry and providing a vast selection of reliable solutions that meet required codes and compliances.

Learn more at tsbrass.com/markets.

Find us in



EDUCATION



PUBLIC VENUES



HEALTHCARE



COMMERCIAL OFFICES

T&S plumbing products represented in Cleveland by: Midwest Spec - 440-944-7500



RC FREY & ASSOCIATES

MANUFACTURERS' REPRESENTATIVE

REPRESENTING THE FINEST IN
COMMERCIAL PLUMBING FOR MORE
THAN 50 YEARS

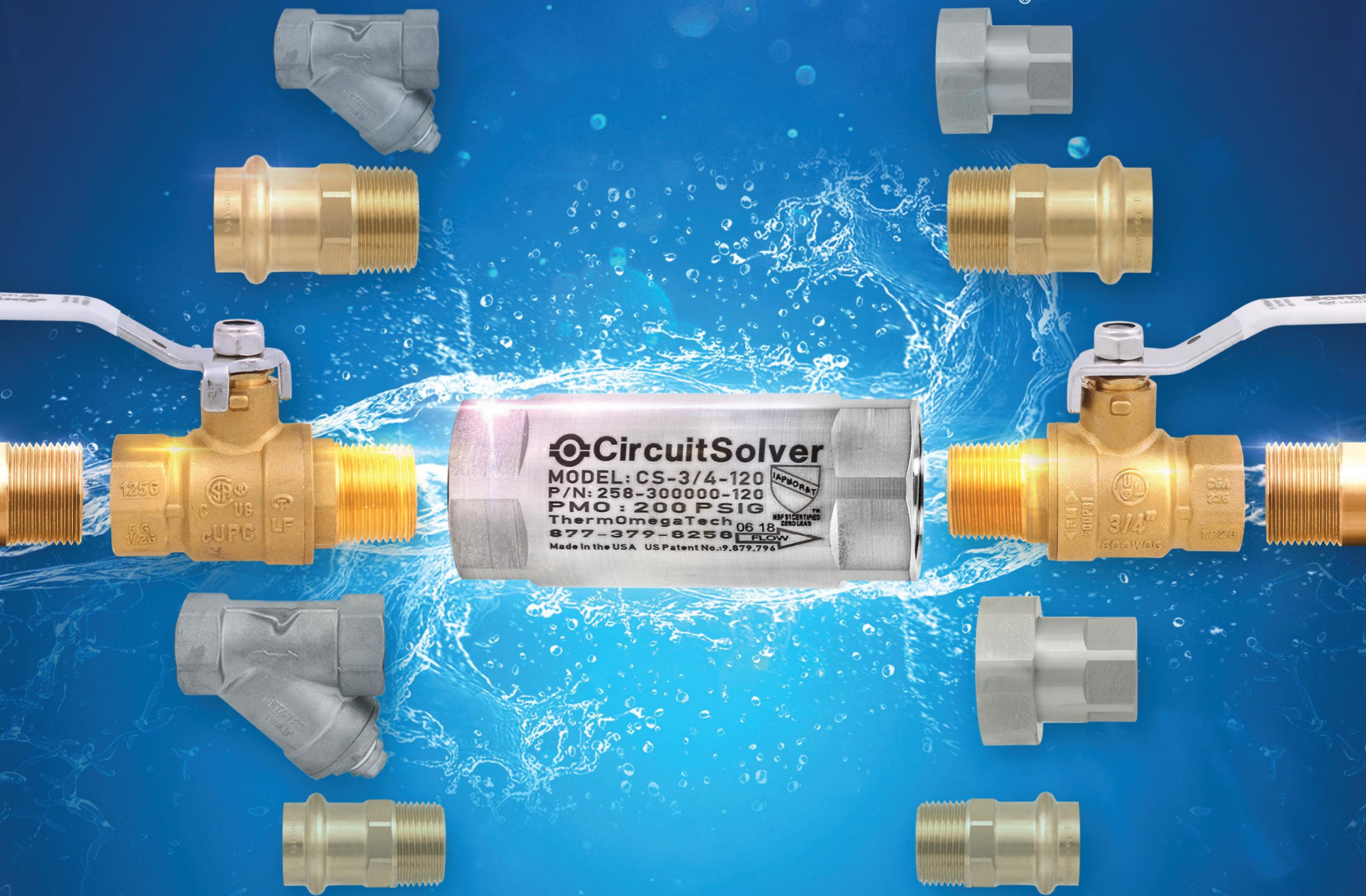
330-425-2555 — WWW.RCFREY.COM





CircuitSolver®

A ThermOmegaTech® product



CHOOSE YOUR PERFECT FIT

Thermostatic Balancing Valves for
Domestic Hot Water Recirculation Systems

Automatically & continuously adjust flow to maintain a
specified temperature in every branch.



PINNACLE SALES

Visit www.CircuitSolver.com/perfect-fit or call (412) 461-9663



COMMERCIAL

Commercial applications demand the highest quality, most consistent materials and parts in the industry. Gerber commercial products offer solutions for schools, high rises, manufacturing, commercial buildings, assisted living facilities and hospitals.



GERBER

NFB Series

navien

NFB Condensing Wall Hung Fire Tube Boilers

Navien... the condensing leader brings you the future of fire tube boiler technology



Navien® Wi-Fi remote control system. Available as an add-on accessory.

THE LEADER IN CONDENSING TECHNOLOGY

Viega ProRadiant

Heating and Cooling Systems



Professional design assistance available for your next project.

viega

Heat-Flo All-Stainless Steel Products

- Indirect Water Heaters
- Hot Water Storage Tanks
- Multi-Energy Tanks
- Hydronic Buffer Tanks
- Sizes 22 to 115 Gallons

Heat-flo

Quality Design and Construction

- All stainless tank and coil.
- Over 2" of insulation with less than 1" hr. heat loss.
- Large, smooth-wall coils collect less lime and sediment.

Easy Installation

- All connections on top for a neat, clean installation.
- Brass drain and T & P Valves are factory installed.

High Output and Dual Coil units for commercial, solar, radiant, and high demand applications.



RAISING THE STANDARD

**CURNAYN
SALES INC.**

21706 Lunn Road, Strongsville, OH 44149
440-846-1280 www.curnaynsales.com



A TRUSTED GLOBAL LEADER IN DIGITAL HOT WATER INNOVATION

Represented locally by:

CRAIG MCDOWELL

Call Today! (440) 808-2280

craig@omarmcdowell.com

OMC

**OMAR MCDOWELL COMPANY
SINCE 1912**



armstronginternational.com

UNEQUALED QUALITY.

WOODFORD **ROOF HYDRANTS:** **RELIABLE** **ROOFTOP WATER.**

- Heavy-duty cast iron mounting system can be installed by roofer; hydrant can be installed later.
- RHY2-MS freezeless hydrants automatically drain when shut off, even with hose attached.
- Easy to repair from top of unit without removing hydrant.
- Five-year limited warranty.

RHY2-MS
Woodford roof hydrant plumbs directly to drain

Woodford SRH
sanitary hydrant: no drain required!



WOODFORD MODEL 68 **FREEZELESS UNDERCOVER** **WALL HYDRANT**



- Model 68 freezeless wall hydrant protected by an integral locking cover
- Drains automatically—even with hose attached
- Replaceable locking stainless steel cover flips down for easy access
- Sleek, streamlined design
- Easier to install than recessed box hydrants



Service • Support • Supply

Manufacturer's Representatives

7860 North Central Drive Lewis Center, OH 43035
740-549-1516 740-548-0985 (Fax)

WOODFORD



WOODFORD
MANUFACTURING COMPANY

Excellence. *Always.*

800.621.6032 • www.woodfordmfg.com



107 Cypress Street S.W. Reynoldsburg, OH 43068
Phone: 740-927-6880 or 888-927-4244 Fax: 740-927-4545

www.RepSourceLLC.com

Manufacturers' Representatives Serving Plumbing, Mechanical, Electrical, Architectural and Water Treatment Industries. Representing the following product lines:

A Better Idea/Quick Block/EZ Sleeper www.pipeease.com	E-Z Sleeper / Quick Block / Pipe Ease – Rooftop pipe and equipment support blocks and deck flanges.
ABT – Polydrain www.abtdrains.com	Pre-sloped polymer trench drains, Trench Former – pre-sloped trench drains systems.
Apollo Flow Controls / Elkhart Products www.apolloflowcontrols.com www.elkhartproducts.com	Conbraco Apollo Flow Control backflow prevention products and Elkhart Products wrought copper tube fittings, cast fittings and EPC engineered push-fit fitting brands include TECTITE and CopperLOC .
Bradley Corporation www.bradleycorp.com	Washbar all in one hand washing stations, washfountains, Express and Frequency lavatory systems, Navigator thermostatic mixing valves, showers, safety equipment, metering faucets, patient care units, Terreon solid surface products, Evero natural quartz products.
Cool Drain Flow www.cooldrainflow.com	Drain Line Tempering Kits for commercial kitchen equipment, boiler blow down drain lines, condensate return, heat exchanger and dehumidifier lines to temper drain water below 140 deg F.
Creative Industries www.creative-terrazzo.com	Pre-cast terrazzo shower floors, mop basins, concrete laundry tubs and stairs or benches, terrazzo or concrete or glass counter tops and custom terrazzo products.
Eemax www.eemax.com	Electric Instantaneous water heaters, DI and booster heaters, emergency shower eyewash heaters, AutoBooster hot water tank booster system.
Hydrotek www.hydrotekintl.com	Sensor operated flush valves and faucets available in both battery and AC options.
Just Manufacturing www.justmfg.com	Stainless steel commercial, institutional & residential sinks and scrub sinks. CuVerro copper antimicrobial sinks.
Keltech www.Keltech-inc.com	Electric Instantaneous water heaters. (A subsidiary of Bradley Corporation)
Kemper Water Control www.kemperwatercontrol.com	Engineered Flow Splitter and Balancing Valve system technology for potable water and Legionella mitigation solutions.
Liberty Pumps www.libertypumps.com	Sump, drain and condensate, utility, transfer, effluent and sewage pumps, Omnivore and ProVore grinders, Accent II macerating toilet system and engineered pump system packages.
Marlo www.marlo-inc.com	Commercial & industrial water softeners, media filters, reverse osmosis, dealkalizers, deionized and EDI electro-deionized water treatment equipment.
Midland Metal Mfg./Anderson Metals www.midlandmetal.com	Lead free brass fittings, valves, pipe nipples, chrome stops and supplies, aluminum, copper and polyethylene tubing, non-metallic fittings, clamps and valves
Oasis International www.oasiscoolers.com	Oasis International, headquartered in Columbus, Ohio, manufactures and distributes a wide range of water dispensing solutions under the Oasis and Sunroc brands.
Plumberex www.plumberex.com	Pro-Extreme , Trap Gear , Handy Shield Maxx and Clear Shield lavatory trap and riser insulation kits. Mushroom Flange and Floor Sink Carrier specialty products.
Raychem / nVent Thermal Solutions www.nVent.com	HWAT self-regulating heating cable system for domestic hot water, XL-Trace , Gardian and WinterGard freeze protection cable, Pyrotenax MI and Electromelt snow and anti-icing cable, IceStop , RIM and FrostGuard roof and gutter de-icing cable, RaySol , NuHeat floor warming and freezer frost heave cable.
RIIFO www.riifo.com	PEX Tubing, PEX-AL-PEX Tubing, fittings, manifolds, tools and accessories.
Schott Scientific Glass / Kimax www.us.schott.com/drainline	Glass piping for acid waste and containment piping systems. Knight-Ware acid neutralizing sumps.
Tight Seal Gasket www.tightsealgasket.com	Toilet & urinal setting with Innovative, flexible design, sticky, reusable, elastomer toilet & urinal gaskets. Compresses up to 50%. Will not break or become brittle. Allows movement without leaking.
TOTO USA www.totousa.com	Global Manufacturer of Residential and Commercial Plumbing Fixtures, Washlet toilet seat, NeoRest toilets and Accessories.
Wade Drainage www.wadedrains.com	Cast iron floor drains, floor sinks, roof drains, cleanouts, carriers, interceptors, hydrants, shock absorbers, trap primers, access covers, trench drains, Siphonic Roof Drainage System.
Water Control Corporation www.watercontrolinc.com	High Capacity Ultra-Filtration for Legionella & Pathogen control, Rainwater Reclamation Systems with Ultraviolet or Ozone purification, vortex downspout separators, storage tanks and complete controls for turnkey systems.
Waterless Company www.waterless.com	Waterless “No Flush” vitreous china and fiberglass urinals with EcoTrap and Blue Seal liquid, UTC Sentinel sensor flushing systems. Everprime floor drain traps primer liquid. Greencleen chemicals.
Xerxes/ZCL www.zcl.com	Fiberglass Water and Wastewater storage solutions. Water storage, grease, oil, solids interceptors, and decontamination tanks.
Additional Products Distributed: www.repsourcellc.com	Bathroom Partitions (solid plastic, baked enamel, stainless steel, laminate and phenolic), Bathroom Accessories, Lockers (solid plastic and metal), Water treatment products.

LEGIONELLA:

Don't Manage the Symptoms. Control the Cause!



We remove Legionella & pathogens *before* they enter your plumbing and mechanical system.

HIGH-CAPACITY ULTRAFILTRATION

Point-of-Entry • Point-of-Use • Hot Water Recirc Treatment



- 99.999% removal of Legionella and pathogens (3rd party-verified)
- A firewall for the entire building
- Drastic reductions in nutrients and biofilms
- 300 GPM+, minimal pressure loss
- Self-cleaning, long-lasting, low maintenance
- Automatic membrane integrity verification (Meets strict EPA guidelines)

Rep  Source LLC



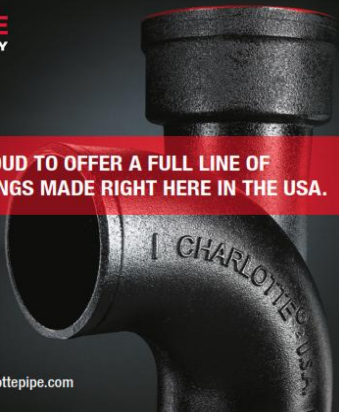
PROTECT YOUR FACILITY AND LEARN MORE AT WATERCONTROLINC.COM

CHARLOTTE
PIPE AND FOUNDRY COMPANY

CHARLOTTE PIPE IS PROUD TO OFFER A FULL LINE OF
CAST IRON PIPE & FITTINGS MADE RIGHT HERE IN THE USA.

visit www.charlottepipe.com

LAURA SIMONS
Field Technical Representative
609-816-2350 laura.simons@charlottepipe.com



Trombold

Equipment Company

our website: www.trombold.com

*If you need to move water call
us we can help!*

*Storm and sewage—Weil
Domestic boosters - Delta P Carver
Fire—Patterson*

Phone 216-663-8700 Fax 216-663-8702

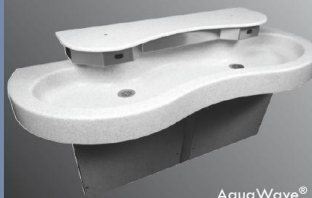
HOW CAN YOU
CONNECT?

connect.aspe.org



BUILT TO LAST, IN AMERICA

Commercial



AquaWave®
Two-station Lavatory

Healthcare



Infection
Control Sink

Recreational



Outdoor Drinking
Fountain & Bottle Filler

Security



Combination
Sink and Toilet



WILLOUGHBY

COUNT ON US.

800.428.4065 | www.willoughby-ind.com

Represented by BWA South

© 2015 Willoughby Industries Inc.



Region 2 Affiliate Report

Returning to Work After CoVID-19? Beware!

The Chinese Wuhan virus (aka CoVID-19) has disrupted our lives more than anyone could have dreamt. Most of us feel like we've been sleeping through a nightmare while awake. As we gain reliable data and insight into this virus, we're beginning to look forward to getting our lives back to normal; let's call it "our new normal". Those of us that enjoy working or need to work to support our loved ones will be returning to our place of employment soon. We'll catch up with our coworkers, exchange happy and sad stories on what we had to do during our stay-home mandate.

What about the water that has been sitting in the pipes in our building and those of our clients while we've been confined to our homes? Over the past years we've done our best to install low-flow fixtures wherever and whenever we could. This was noble, it seemed to be the right thing to do. We were "saving water". But whom could have imagined a pandemic like the Wuhan virus and the unintended consequences related to our building water systems? Has anyone addressed this in the emergency response section of their water management plan? I'm guessing not.

A building that has been closed for an extended period or has had limited access is most at risk to the people returning to that facility. Reduction in building water usage creates hazardous conditions ripe for bacteria growth, other pathogens and corrosion concerns.

Plumbing systems and associated equipment like cooling towers, pools, decorative fountains, hot tubs, ice machines, drinking fountains, bottle fillers, and kitchen equipment are just a few of the locations you must pay attention to. Going around the building and flushing a few fixtures will not minimize problems that lurk in these pipes. There is a sequence to flushing that should be executed correctly and it starts with a full understanding of the building water system and the risks associated at every change of direction and usage.

If there hasn't been a continuous call for water at a level that the building was designed for, then there is an increased risk that the floor drains and trench drains may have dried out. This could lead to sewer gases entering the built environment.

Water sitting in pipes also gives way to leaching of chemicals like lead. LEAD? We haven't added lead to building plumbing systems since 2014! Maybe so, but how many buildings do you know of in your local area that were designed and built before 2014? Unless you're in a brand-new city, then the answer is most all of them.

Here is more to think about. If your building is near a residential community, then chances are the municipal water lines feeding that area have seen higher than normal demand. Not bad. But what if your facility is in a commercial/industrial park and the entire area has been vacant for 1-2 months. That entire area has not had a call for water. When the demand ramps up, then the biofilm and sediment that has accumulated in those lines will be stirred up and make their way into your building too. You should consider coordinating with your municipality to flush the fire hydrants before you begin to bring your building back online!

The industry is gathering plenty of data on the dilemmas poised by this pandemic and guidelines are being written to address these problems. The CDC and the Washington State Department of Health have created good reference material. I know AWWA, ASPE and NSF are working together to push out more information. ASHRAE is putting a task force together to develop an HVAC response to buildings with low occupancy or buildings that are unoccupied.

Lessons learned during CoVID-19 will be referenced by plumbing and mechanical engineers forever. In the meantime, contact me and I can send you a nice 1-page printable PDF to post for quick reference on this topic.

Dann Holmes – ASPE Region 2 Affiliate Liaison
NSF International – r2al@aspe.org

COVID-19

AND ITS EFFECT ON YOUR BUILDING WATER HEALTH



Preventing the Amplification of Waterborne Pathogens in Low Occupancy Buildings in Times of National Crises

The critical actions taken to slow and prevent the spread of COVID-19 worldwide, such as physical distancing and temporary shutdowns of businesses, have resulted in an unprecedented decline in the utilization of water in commercial, education, hospitality and manufacturing facilities. While we manage the risks from COVID-19, it is critical that we also control the physical, microbiological and chemical risks associated with low- or non-operating building water systems.

TOP RISK AREAS

The top risks we see in buildings with low or no utilization during this time are:



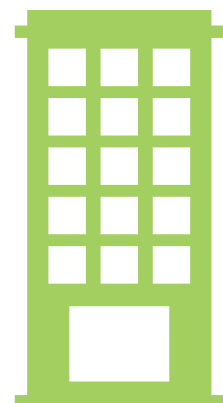
Amplification of *Legionella*
and other waterborne pathogens due to water age



Leaching of lead
and other metals into water distribution systems,
causing drinking water quality issues



Expedited corrosion of plumbing components
leading to premature pipe failure and unexpected
costs for emergency repair



NOT ALL BUILDINGS ARE CREATED EQUAL

Since each building and the combination of water systems is unique, it is critical to follow site-specific procedures, so your water management strategies prevent additional public health hazards. If you have a water management plan, it should be updated to reflect risk management strategies during COVID-19 operating conditions. If a water management plan is not in place, one should be created.

Which building types are most likely at risk?



Commercial



Educational/Cultural



Hospitality



Manufacturing



Medical

PRACTICAL STEPS FOR RISK PREVENTION

There are several practical steps that can be taken to help prevent risks from amplifying in your building:

- 1 Keep water flowing to reduce water age
- 2 Strategically monitor disinfectant residuals
- 3 Maintain routine treatment of cooling towers and other aerosol-generating water systems
- 4 Control water temperature ranges to reduce amplification of *Legionella* and other waterborne pathogens
- 5 Put in place water quality monitoring strategies (disinfectant residual, pH, temperature, microbiological analysis)
- 6 Keep your records updated and defensible (verification and validation)
- 7 Incorporate water safety into your business continuity plans. Prior to returning to normal service, a site-specific plan for evaluating and documenting the safety of water systems must be prepared.

TAKING ACTION



Acting now will help control amplification of risks during COVID-19 operations and expedite your building returning to normal operations knowing waterborne disease and lead exposure risks have been properly managed.

For more information about how NSF's building water health experts can help you minimize the risks associated with all water systems in your buildings or facilities during these uncertain times, email us at buildingwaterhealth@nsf.org.

7737 Reinhold Drive
Cincinnati, OH 45237
Phone (800) 542-1682
Fax (877) 476-1682



& A S S O C I A T E S

4640 Hinckley Industrial PKWY
Cleveland, OH 44109
Phone (800) 542-1682
Fax (877) 476-1682
Kim Metzger—Cell 216-406-7974



Representative for Ohio, Indiana, Kentucky

Products for the fire protection, irrigation and waterworks markets. Backflow preventers, control valves, in-building risers, pre-assembled valve station products.



Representative for Ohio, Indiana, Kentucky, W. Pennsylvania, W. Virginia

Manufacturers of PP-RCT polypropylene heat fusion pipe and fittings for multiple fluid handling systems.



Representative for Ohio, Indiana, Kentucky

Armstrong Pump is an established leader in fluid flow innovation and is internationally recognized for design efficiency, long service life and operating economy.



Representative for Ohio, Indiana, Kentucky

Manufacturers of stainless steel drainage systems. Product ranges from standardized products to customized drains.



Representative for Ohio, Indiana, Kentucky, W. Pennsylvania, W. Virginia

Modular board, insulation, vapor barrier, and radiant floor tube holding



Representative for Ohio, Indiana, Kentucky

The world's leading provider of flexible stainless steel connectors for natural/LP gas and fluid conveyance applications.



Representative for Ohio, Indiana, Kentucky

An industry leader in manufacturing backflow prevention assemblies and related flow control products servicing the irrigation market.



Representative for Ohio

Fiat is a leader in the development and manufacturing of plumbing products for the commercial, institutional and residential markets.



Representative for Ohio, Indiana, Kentucky

Manufacturer of oil/water separator, wastewater treatment systems products.



Representative for Ohio, Kentucky

Offers plumbing hangers, straps, fasteners and other solutions for installation of plumbing products and pipe.



Representative for Ohio & Kentucky

Enclosures for backflow preventers for outdoor installations.



Representative for Ohio, Indiana, Kentucky

A premier producer of commercial and institutional restroom solutions.



Representative for Ohio

Innovative systems integrating mechanical and electrical technology to provide control systems to promote safety in science laboratories



Representative for Kentucky, Ohio

Mueller Steam Specialty is the world's largest supplier of strainers and the number one provider of specialty products serving the valve industry.



Representative for Ohio, Indiana, Kentucky

Acid waste, high purity, double-containment pipe and systems.



Representative for Ohio, Indiana, Kentucky

Manufacturers of thermostatic mixing valves for building, point-of-use and emergency equipment, tub/shower systems with pressure balancing, thermostatic, or combination shower controls.



Representative for Ohio, Indiana, Kentucky, Western Pennsylvania, West Virginia

Manufacturers of faucets, shower systems, showerheads, eyewash and drench shower systems for commercial, residential, hospital, and industrial uses.



Representative for Ohio, Kentucky

Leader in complete control solutions for radiant floor and baseboard heating systems, multi-stage boiler plants, and automatic snow melting systems.



Representative for Ohio, Kentucky, Indiana, West Virginia, Western PA.

Manufacturers of quality brass nipples since 1901.



Representative for Ohio, Kentucky, Indiana, West Virginia, Western PA.

Flexible corrugated piping systems for natural gas and propane, as well



Representative for Ohio, Indiana, Kentucky

Premier manufacturer of plumbing valves including PRV's, control valves, backflow preventers, gate/globe/check valves, butterfly valves, hydronic heating valves, water heater installation products, quick-connect fittings,

IntelliStation™:

**The smarter way
to deliver tempered water**



The Intelligent Water Mixing and Recirculation System

The IntelliStation™ provides unmatched levels of control over hot water delivery in commercial and institutional buildings.

- Precise digital control to $\pm 2^{\circ}\text{F}$
- Smart, easy-to-use controller with color touchscreen
- BAS integration
- Access to rich system data
- Integrated pump control for reliable, consistent temperatures
- Easy commissioning, repair, and management
- Sanitization mode allows for high temperature system purges
- Compliant with lead free legislation requirements

Learn about the smarter water mixing solution at
PowersControls.com/IntelliStation

POWERS™
A Watts Water Technologies Company



MASTROIANNI & ASSOCIATES, INC.

Manufacturers' Representative of Products for the Mechanical Trades Since 1984

HOT WATER PRIMETER HEATING, STEAM, ELECTRIC RADIATORS, TOWEL WARMERS

RUNTAL RADIATORS www.runtalnorthamerica.com

LINK SEALS, PIPE SLEEVES, CASING SPACERS, END SEALS

LINK SEAL , GARLOCK , PSI, THUNDERLINE, GPT www.linkseal.com

BARCO BALL JOINTS, PACKED SLIP JOINTS, BELLOWS EXPANSION JOINTS, VENTURI FLOW METERS, SEISMIC 'V'-LOOPS

HYSpan PRECISION PRODUCTS www.hyspan.com

HEAT EXCHANGERS (SHELL & TUBE), AIR & DIRT SEPARATORS, HYDRAULIC SEPARATORS, AUTOMATIC AIR VENTS, PUMPS, SUCTION DIFFUSERS, TRIPLE DUTY VALVES

THRUSH CO www.thrushco.com

DOMESTIC WATER BOOSTER SYSTEMS, SKID MOUNTED HVAC PACKAGES

TIGERFLOW SYSTEMS www.tigerflow.com

HYDRONIC BALANCING VALVES (AUTOMATIC & MANUAL), "COIL PAKS", HOSE PAKS, BYPASS KITS

NEXUS VALVE www.nexusvalve.com

HUMIDIFIERS (STEAM, ELECTRIC, GAS, DISPERSION MANIFOLDS)

PURE HUMIDIFIER www.purehumidifier.com

EXPANSION TANKS, BUFFER TANKS, AIR SEPARATORS, GLYCOL MAKE-UP SYSTEM

JOHN WOOD CO www.johnwood.com

SUMP PUMPS & OIL MINDER / DETECTION SYSTEMS CONDENSATE / BOILER FEED / VACUUM PUMP PACKAGES

STANCOR PUMPS..... www.stancorpumps.com

FEDERAL PUMPS CO..... www.federalpumps.com

PLATE & FRAME HEAT EXCHANGERS

POLARIS..... www.polarisphe.com

PUMPS: END SUCTION, IN-LINE, RECIRCULATION

THRUSH PUMP..... www.thrushco.com

CHECK VALVES, STRAINERS, BUTTERFLY VALVES

TITAN / MUELLER..... www.titanfci.com

BONOMI www.bonominorthamerica.com

FLEX CONNECTORS, EXPANSION JOINTS, NESTED LOOPS, PIPE GUIDES

ENGINEERED FLEXIBLE PRODUCTS..... www.general-rubber.com

GENERAL RUBBER CO..... www.engineeredflex.com

VIBRATION ISOLATION - SPRING HANGERS, VIBRATION CURB BASES, INERTIA BASES

VIBRATION ELIMINATOR CO www.veco-ny.com

PRE-INSULATED PIPE SHIELDS

VALUE ENGINEERED PRODUCTS www.valueng.com

THERMOMETERS, PRESSURE GAUGES, P/T PLUGS, GAUGE ACCESSORIES

WEKSLER GLASS THERMOMETER CORP..... www.wekslerglass.com

7601 First Place Drive ~ Ste A- 13 ~ Phone: 440.786.1100 ~ Fax: 440.786.1103

www.mastroiannihvac.com



The American Society of Plumbing Engineers (ASPE) Convention & Expo

The 2020 ASPE Convention & Expo is dedicated to quality education, connections and experiences for those skilled in the design, specification and inspection of plumbing systems.

2020 ASPE Convention & Expo
September 11-16, 2020
New Orleans, Louisiana

Save the Date

CORZAN CPVC PIPING SYSTEMS



- Potable Water Distribution Systems
- Pure Water Systems
- HVAC (Hydronic and Vent Piping)
- Chemical Fluid Handling
- Plenum-rated

Contact your local Rep for training or ASPE approved presentations on CPVC or go to corzanplumbing.com for more information.

Rob Lloyd • 317-690-2269 • Rob.Lloyd@lubrizol.com

© 2018 The Lubrizol Corporation, all rights reserved.
All marks are the property of The Lubrizol Corporation.
The Lubrizol Corporation is a Berkshire Hathaway company.

CORZAN
PIPING SYSTEMS



Paired with Sloan High-Efficiency Flushometers, our Commercial Toilet and Urinal Systems take water efficiency to the next level.



All Sloan Flushometers are made from a high level of recycled material and are 100 percent recyclable.



Sloan Bio-Deck Sinks utilize natural materials such as corn cobs and other renewable domestic agricultural materials.



Dual-Flush Side Mount Retrofit is a fast, easy way to reduce water consumption.



Sloan Hands-Free Faucets promote cleanliness, hygiene and overall health benefits.



Monitoring Systems reduce operating costs and decrease water consumption.

Water Power

To arrange a personal consultation, call us at **800.982.5839**.

Every day around the world, Sloan advanced integrated water management systems provide elegant, efficient and hygienic washroom solutions for any commercial environment.

SLOAN®

Water Connects Us™



Call — 440-944-7500

Viega MegaPress® Stainless
Original innovation — new choices

viega.us/mpstainless

Advantages of MegaPress Stainless for IPS

- Approved for use with Schedule 10 and Schedule 40 pipe
- Viega Smart Connect® feature makes unpressed fittings easy to detect during pressure testing
- No risk of fire or smoke and no cool-down required, so fire watches or hot work permits are not needed
- ASME approvals: B31.1, B31.3, B31.9
- Fitting sizes ranging ½" to 2"

Viega. Connected in quality.

For more information, contact:

Carl Petitt, Jr.
Technical Manager
Great Lakes
carl.petitt@viega.us
(614) 852-2691

Dan Meredith
District Sales Manager
dan.meredith@viega.us
(440) 241-4939

viega

RIDGID® is a registered trademark of RIDGID, Inc.

BWA SOUTH *Manufacturer's Representative of quality plumbing products since 1956*

ZURN **ASI GROUP** **WILKINS**
a ZURN company
PARTITIONS ACCESSORIES LOCKERS

HTP **aquatherm** **WILLOUGHBY**

ZURN GreenTurtle **CENTOCO** **CHARLOTTE PIPE AND FOUNDRY COMPANY**

AX AQUANOMIX **SW STERN-WILLIAMS** **AQUARIUS**

Jomar GROUP **ELKAY** **IDEAL**

Visit us at WWW.BWASOUTH.COM

Midwest Spec. mwspec.com Office (440) 944-7500
Lee Fink (216) 618-4111
Tim Morrissey (330) 242-2114

Plumbing Lines

ACORN **ACORN CONTROLS** **CHRONOMITE** **MURDOCK**

Guardian **SLOAN**

SAFE-T-COVER **SMITH** **ACO SMITH Trench Drain Series**

T&C **T&S**

Heating Lines

aquatherm **CHROMALOX**
Commercial Heat Tracing System

Watson McDaniel **WEIL-McLAIN**

Valves, Fittings & Accessories

BONOMI **Brimar INDUSTRIES, INC.**

Flux-Hose **KITZ** **TYLOR**



LAKE SIDE SUPPLY COMPANY

Serving Northern Ohio Since 1933



Lakeside Supply Company was founded in 1933 as a wholesale vendor of plumbing, heating, and industrial supplies to the northern Ohio marketplace. Over the years we have endeavored to provide services and products of the highest quality to the contractor, industrial, and commercial marketplace.

3000 West 117th Street
Cleveland, OH 44111-1667
Ph. 1-800-537-1234
Ph. 216-941-6800
Fax 216-941-8408
sales@lakesidesupply.com

SERVICES

Valve Automation
Electric & Pneumatic
Lakeside Managed Store Rooms

TOOLS

RIDGE TOOL
LENOX
CHAMPION
REED MFG
WHEELER-REX

SUMNER MFG

RAWL
JET-SWET
COB PIPE FREEZING
PASCO SPECIALTY TOOLS
CHERNE TEST BALLS
CHANNELLOCK
GOSS TORCHES
TURBOTORCH
VERMETE
Street Keys

Grinding Wheels & Brushes
Extension Cords & Gfi's

TOOL RENTALS

VICTAULIC-GROOVING MACHINE
ENFUSION TOOL
ENPURE TOOL
MCELROY FUSION PPR
RIDGE PRO-PRESS
EXACT PIPE CUTTING SYSTEM

Please visit lakesidesupply.com/products for full listing

Hours: Mon-Fri 7:30 am 5:00 pm | City Counter Open: Mon-Fri 7:30 am-4:30 pm | Closed for National Holidays

A Growing Family For A Growing World



Introducing the Ultra Force® LV

The State Ultra Force® family of commercial water heaters is now bigger and better with the addition of the new Ultra Force LV. Cutting-edge technology and a larger storage tank compared to other Ultra Force models allow the Ultra Force LV to meet most critical load requirements—and that's a big deal, literally.



iCOMM remote monitoring



Up to 96% Thermal Efficiency



Represented in Ohio by



American Society of Plumbing Engineers
Cleveland Chapter
PO Box 5962
Cleveland, Ohio 44101-0962



Recipient



Recipient



** Local Chapters are not authorized to speak for the Society