

**Cleveland Chapter of The American Society of Plumbing Engineers  
March 2025**

**CHAPTER OFFICERS**

**President**

JOHN VARGA, P.E.  
Scheesser Buckley Mayfield, Inc.  
Email: [jvarga@sbmce.com](mailto:jvarga@sbmce.com)  
(330) 526-2715

**V.P. Technical**

MARLON WRIGHT P.E., CPD  
T/E/S Engineering  
Email: [mwright@tesengineering.com](mailto:mwright@tesengineering.com)  
(440) 871-2410

**V.P. Legislative**

CHRIS STACKHOUSE  
Rep Source, LLC  
Email: [cstackhouse@repsourcelc.com](mailto:cstackhouse@repsourcelc.com)  
(614) 315-6606

**V.P. Membership**

FRANK MASTROIANNI JR.  
Mastroianni & Associates, Inc.  
Email: [frankjr@mastroiannihvac.com](mailto:frankjr@mastroiannihvac.com)  
(440) 786-1100

**Treasurer**

KEVIN NOBLE, P.E., LEED AP  
Scheesser Buckley Mayfield, Inc.  
Email: [knoble@sbmce.com](mailto:knoble@sbmce.com)  
(330) 526-2714

**Administrative Secretary**

DAN EVANS, P.E., CPD, GPD  
HEI Engineering Group, Inc.  
Email: [evans@hei-engineering.com](mailto:evans@hei-engineering.com)  
(330) 262-0042

**Corresponding Secretary**

KIM METZGER  
Edelman Supply  
Email: [kimberly@edelmanplumbing.com](mailto:kimberly@edelmanplumbing.com)  
(216) 333-8475

**Affiliate Liaison**

KATHY KIRSCHNICK  
Johnson Controls  
Email: [kkirschnick123@gmail.com](mailto:kkirschnick123@gmail.com)  
(216) 904-6656

**AYP Group Liaison**

NICO ROMERO, EIT, CPDT  
T/E/S Engineering  
Email: [nromero@tesengineering.com](mailto:nromero@tesengineering.com)  
(440) 614-0324

**WOA Group Liaison**

KATHY KIRSCHNICK  
Johnson Controls  
Email: [kkirschnick123@gmail.com](mailto:kkirschnick123@gmail.com)  
(216) 904-6656

**Chapter Ambassador**

KEITH BUSH FASPE, CPD, GPD, CSI  
Email: [kbush@wright-engineering.com](mailto:kbush@wright-engineering.com)  
(330) 815-9368

**Newsletter Editor**

MICHAEL DRAB  
Thorson Baker & Associates, Inc.  
Email: [mdrab@thorsonbaker.com](mailto:mdrab@thorsonbaker.com)  
(330) 659-6688

**From the President:**



I would like to thank Rob Miller with Omega Flex for being our guest speaker at the February Technical Meeting.

Please welcome our newest member to the Cleveland Chapter; Jason Affolter with Tri-Tech Medical.

The March Technical Session will be on the topic; NFPA 99 2021 Code Updates, presented by Josh Pedraja, Director of Education and Certification with American Society of Plumbing Engineers.

March 12, 2025, Dinner Meeting will be held at Holiday Inn in Independence located at 6001 Rockside Road, Independence, Ohio 44131.

5:00 – 5:30 Chapter Board Meeting  
5:30 – 6:00 Sign-In / Meet and Greet / Vendor Display  
6:00 – 6:30 Dinner  
6:30 – 7:30 Presentation  
7:30 – 8:00 Q & A / Vendor Display

ASPE Cleveland is going CASHLESS and now accept Paypal, Venmo or Credit Card! Dinner price is \$20. Your electronic payment will confirm your RSVP! No walk-ins will be permitted. Please click [HERE](#) to RSVP by Noon on March 10, 2025. Please support your local chapter by attending.

Let us know if there are any specific topics you would like to see our chapter sponsor. We are always looking for new ideas. Remember, without membership and participation there is no local chapter.

John A. Varga, P.E.  
President, ASPE Cleveland Chapter

**2024 - 2025 ASPE Meeting/Plumbing Class Schedule  
March 2025**

<u><b>Date – Time – Place</b></u>	<u><b>Topic</b></u>	<u><b>Speaker(s)</b></u>	<u><b>Exhibitors</b></u>
September 18, 2024 – 6:00 PM Cleveland Yachting Club	Clam Bake Topic – Social Event ASPE Cleveland Chapter	N/A	N/A
October 9, 2024 – 6:00 PM Harry's Steakhouse  Cost: FREE	Specifying Emergency Fixtures	Jonny Pingry - Guardian	Midwest Spec
November 13, 2024 – 6:00 PM KD Party Center 6085 State Rd. Parma, OH 44130  Cost: \$20	Pre-action Fire Protection Systems	Sam Schwander Reliable Automatic Sprinkler Co., Inc.	Reliable Automatic Sprinkler Co., Inc.
December 11, 2024 – 12:00PM North Royalton Public Library 5071 Wallings Road, North Royalton  Cost: FREE	Drinking Water Filtration Legislation	Zach Dufala – ZURN / Elkay	BWA South
January 8, 2025 – 6:00 PM Slyman's Tavern Independence  Cost: \$20	Engineered Infection Prevention	Tim Dallas - Franke	Rep Source, LLC
February 12, 2025 Slyman's Tavern Independence  Cost: \$20	New Innovations in Medical Gas Piping	Rob Miller – Omega Flex	Omega Flex, Inc.
<b>March 12, 2025 – 6:00PM</b> <b>Holiday Inn Rockside in</b> <b>Independence</b>  <b>Cost: \$20</b>	<b>NFPA 99 2021 Code Updates</b>	<b>Josh Pedraja</b>	<b>Josh Pedraja</b>
April 16, 2025 – 12:00 PM R.L. Deppmann  Cost: FREE	Thermal Expansion and Vibration Isolation Applications (tentative topic)	R.L. Deppmann	R.L. Deppmann
May 14, 2025 Time and Location TBD  Cost: TBD	PVDF Piping Overview and Applications  Chapter Board Elections	Marco Deangelo - Arkema	Arkemo

**2024 - 2025 ASPE Meeting/Plumbing Class Schedule  
March 2025**

The above is the meeting/plumbing class schedule for the 2024-2025 ASPE year. Updated information will appear in subsequent newsletter issues. All meetings will be at Harry's Steakhouse, 5664 Old Brecksville Road, Independence unless otherwise indicated. The meeting/plumbing class, including dinner, is \$20.00 Unless noted otherwise. Reservations are required. A mini product show will be held before each meeting/plumbing class highlighting some of the materials discussed in class or products that will assist the engineer in understanding what they are designing or specifying. All plumbing classes will qualify for 0.1CEU hours and will assist in preparation for the ASPE CPD examination.

The following times will be enforced as strictly as possible.  
Make your reservations a minimum of two days before the meeting/class and try to be on time.

Evening Seminars:

- Chapter Board Meeting 5:00 - 5:30 pm
- Sign-in / Meet and Greet / Vendor Product Displays 5:00 - 6:00 pm
- Dinner 6:00 - 6:30 pm
- Presentation 6:30 - 6:45 pm
- Vendor Product Displays 6:45 - 7:45 pm

Lunchtime Seminars:

- Mini Product Show 11:30 - 11:45 am
- Sign-In / Meet and Greet / Vendor Product Displays 11:45 - 12:00 pm
- Lunch 12:00 - 12:30 pm (Seminar to begin during lunch)
- Presentation 12:00 - 1:00pm

# PROUDLY PROVIDING THERMOSTATIC BALANCING SOLUTIONS FOR OVER 10 YEARS

## Hot Water Recirculation



In 2012, CircuitSolver® was developed to conquer the challenges inherent to conventional manual balancing valves. As the market's first **thermostatic balancing valves** used for domestic hot water recirculation, CircuitSolver® balances a system based solely on temperature as opposed to pressure or flow to guarantee hot water at **every fixture**. Dynamically balancing a system, CircuitSolver® ultimately **ended complaints** about the lack of hot water, and eliminated balancing processes and callbacks.

## Cold Water Recirculation



Last year, we implemented our thermal actuator technology into the CircuitSolver® Union Cold Water balancing valves. These valves are installed in domestic Cold Water recirculation systems to mitigate the risk of Legionella and other bacterial growth. Cold water recirculation is becoming more prominent in hospitals to reduce water stagnation and ensure residual chlorine is distributed but can be beneficial to any commercial building that could experience periods of low flow or non-use.

**PINNACLESALES**



[www.pinnacle reps.com](http://www.pinnacle reps.com)



(800) 253-7010



## T&S has your **plumbing** solutions.

Discover the lasting reliability of T&S. From hose reels to sensor faucets, lab equipment to high-end fixtures, T&S offers all the plumbing products you need, with reliability built in. Contact your representative today to learn how T&S can outfit any facility, or visit [tsbrass.com](http://tsbrass.com).



T&S plumbing products represented in Cleveland by: Midwest Spec., LLC • 513-353-9191





PLUMBING GROUP



## Superior Performance & System Reliability

DuRa Pipe™ enhanced epoxy coating applied to cast iron soil pipe and fittings. It is well suited for aggressive DWV applications where greater performance is required.



[ABIFoundry.com](http://ABIFoundry.com)



[Anaco-Husky.com](http://Anaco-Husky.com)



PIPE & COUPLING

[TylerPipe.com](http://TylerPipe.com)



A close-up photograph of a hand operating a brass press valve on a copper pipe. The hand is positioned on the left, with fingers gripping a silver metal lever that has two circular holes. The lever is attached to a brass valve body, which is connected to a thick copper pipe. The background is dark and out of focus.

**NIBCO**<sup>®</sup>  
**press**system<sup>®</sup>

# FIND YOUR FIT

**Choose from Over  
600 Press Valve SKUs,  
the Largest Offering  
in the Industry**

- Options ranging from ½" – 4"
- Select from over 65 different valve configurations
- Our total system – valves, fittings and tools – comes with unparalleled service
- Experience the best customer service in the industry – as judged by our customers

**FIND YOUR FIT AT  
[NIBCO.COM/PRESS](http://NIBCO.COM/PRESS)**

**Amanda Miller | Area Sales Manager**  
614.634.2516 | [millera2@nibco.com](mailto:millera2@nibco.com)

**Paul Figuly | Assistant Regional Manager**  
216-402-7056 | [figuly@nibco.com](mailto:figuly@nibco.com)

**Aaron Kilburg | Commercial Sales Manager**  
331-262-0868 | [kilburga@nibco.com](mailto:kilburga@nibco.com)



Line Card – October 2024

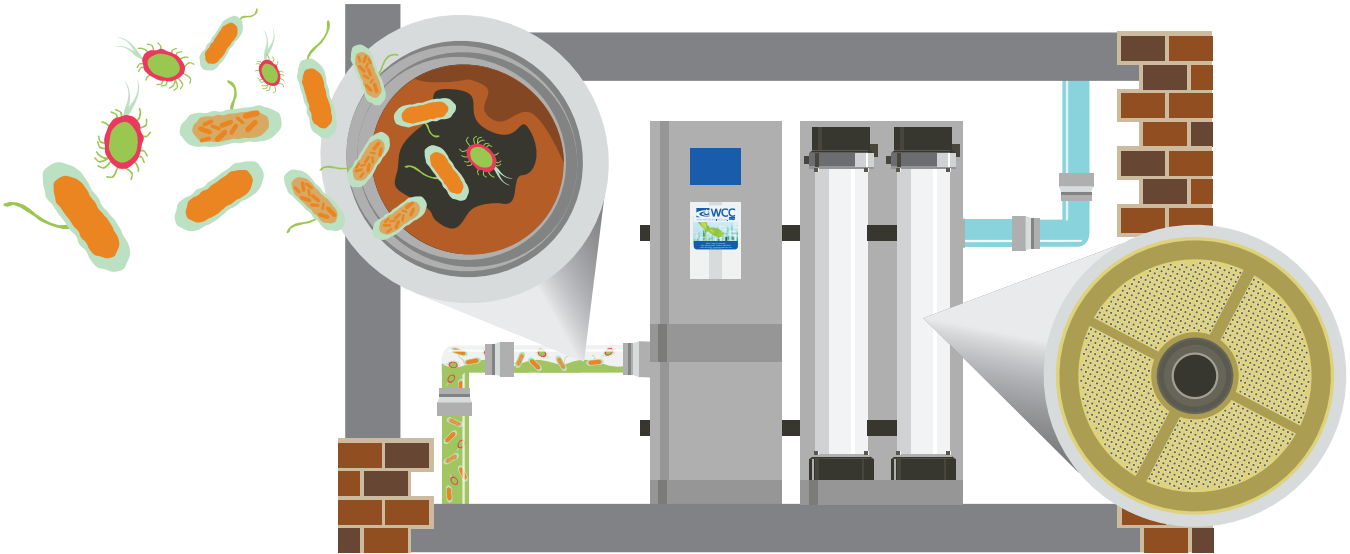
107 Cypress Street S.W. Reynoldsburg, OH 43068  
Phone: 740-927-6880 Fax: 740-927-4545  
[www.RepSourceLLC.com](http://www.RepSourceLLC.com)

Manufacturers Representatives Serving Plumbing, Mechanical, Electrical, Architectural and Water Treatment Industries. Representing the following product lines:

<b>A Better Idea/Quick Block/EZ Sleeper</b> <a href="http://www.pipeease.com">www.pipeease.com</a>	<b>E-Z Sleeper / Quick Block / Pipe Ease</b> – Rooftop pipe and equipment support blocks and deck flanges.
<b>AB&amp;I Foundry</b> <a href="http://www.abifoundry.com">www.abifoundry.com</a>	No-Hub and Hub and Spigot Cast Iron Soil Pipe and Fittings
<b>Anaco-Husky</b> <a href="http://www.anaco-husky.com">www.anaco-husky.com</a>	American made complete line of heavy-duty <b>Husky</b> high performance and standard no-hub couplings, <b>Cremco</b> specialty transitional couplings and service weight gaskets.
<b>Apollo Valves Backflow</b> <a href="http://www.apollovalves.com">www.apollovalves.com</a>	<b>Apollo Valves</b> backflow prevention products for plumbing, fire protection, waterworks and irrigation markets.
<b>Atlas Filtri</b> <a href="https://us.atlasfiltri.com">https://us.atlasfiltri.com</a>	Water filtration solutions including: Filter Housings, Cartridges, Whole House and Tankless Water Heater Complete Kits, Hydra Self-Cleaning, Reverse Osmosis and <b>ScaleArmor</b> Polyphosphate.
<b>Bradley</b> <a href="http://www.bradleycorp.com">www.bradleycorp.com</a>	<b>Washbar</b> all in one hand washing stations, washfountains, <b>Express</b> and <b>Frequency</b> lavatory systems, <b>Navigator</b> thermostatic mixing valves, showers, safety equipment, metering faucets, patient care, <b>Terreon</b> solid surface products, <b>Evero</b> natural quartz products, <b>Keltech</b> safety/skid water heaters.
<b>Creative Industries</b> <a href="http://www.creative-terrazzo.com">www.creative-terrazzo.com</a>	Pre-cast terrazzo shower floors, mop basins, concrete laundry tubs and stairs or benches, terrazzo or concrete or glass counter tops and custom terrazzo products.
<b>Elkhart Products</b> <a href="http://www.elkhartproducts.com">www.elkhartproducts.com</a>	<b>Elkhart Products</b> wrought copper tube fittings, cast fittings and EPC engineered push-fit fitting brands include <b>TECTITE</b> and <b>CopperLOC</b> .
<b>Franke</b> <a href="http://www.franke.com/us/en/water-solutions/products.html">www.franke.com/us/en/water-solutions/products.html</a> <a href="http://www.franke.com/us/en/home-solutions.html">www.franke.com/us/en/home-solutions.html</a>	Commercial, Institutional, Healthcare, Scullery, Utility, Vanity and Handwash stainless steel sinks, faucets and accessories. Residential and Luxury <b>Mythos</b> and <b>Maris</b> stainless steel, granite, fireclay, work center and farmhouse kitchen sinks, faucets and specialty products.
<b>Hydrotek</b> <a href="http://www.hydrotekintl.com">www.hydrotekintl.com</a>	Sensor operated flush valves and faucets available in both battery and AC models.
<b>Kemper Water Control</b> <a href="http://www.kemperwatercontrol.com">www.kemperwatercontrol.com</a>	Engineered <b>Flow Splitter</b> and <b>Balancing Valve</b> system technology for domestic water and Legionella mitigation solutions.
<b>Liberty Pumps</b> <a href="http://www.libertypumps.com">www.libertypumps.com</a>	Sump, drain and condensate, utility, transfer, effluent and sewage pumps, <b>Omnivore</b> and <b>ProVore</b> grinders, <b>Accent II</b> macerating toilet system and engineered pump system packages.
<b>Marlo</b> <a href="http://www.marlo-inc.com">www.marlo-inc.com</a>	Commercial & industrial water softeners, media filters, reverse osmosis, dealkalizers, deionized and EDI electro-deionized water treatment equipment.
<b>Mountain Plumbing Products</b> <a href="http://www.mountainplumbing.com">www.mountainplumbing.com</a>	High performance Water Appliances “Made Better by Design” including plumbing accessories, water filters, waste disposers, instant hot water tanks, and water chillers.
<b>Plumberex</b> <a href="http://www.plumberex.com">www.plumberex.com</a>	<b>Pro-Extreme</b> , <b>Trap Gear</b> , <b>Handy Shield Maxx</b> and <b>Clear Shield</b> lavatory trap and riser insulation kits. <b>Mushroom Flange</b> and <b>Floor Sink Carrier</b> specialty products.
<b>Raychem / nVent Thermal Solutions</b> <a href="http://www.nVent.com">www.nVent.com</a>	<b>HWAT</b> self-regulating heating cable system for domestic hot water, <b>XL-Trace</b> , <b>Gardian</b> and <b>WinterGard</b> freeze protection cable, <b>Pyrotenax MI</b> and <b>Electromelt</b> snow and anti-icing cable, <b>IceStop</b> , <b>RIM</b> and <b>FrostGuard</b> roof and gutter de-icing cable, <b>RaySol</b> , <b>NuHeat</b> floor warming and freezer frost heave cable.
<b>Schott Scientific Glass / Kimax</b> <a href="http://www.us.schott.com/en-us/products/kimax">http://www.us.schott.com/en-us/products/kimax</a>	Glass piping for acid waste and containment piping systems. <b>Knight-Ware</b> acid neutralizing sumps.
<b>Stiebel Eltron</b> <a href="http://www.stiebel-eltron-usa.com">http://www.stiebel-eltron-usa.com</a>	Electric tankless/instantaneous/mini tank water heaters for commercial, residential and industrial applications, emergency shower eyewash heaters, <b>Accelera</b> E heat pump water heaters, hot water tanks for solar, geothermal, and hydronic, instant hot water dispensers, electric fan heaters and hand dryers.
<b>Tight Seal Gasket</b> <a href="http://www.tightsealgasket.com">www.tightsealgasket.com</a>	Toilet & urinal setting with Innovative, flexible design, sticky, reusable, elastomer toilet & urinal gaskets. Compresses up to 50%. Will not break or become brittle. Allows movement without leaking.
<b>TOTO USA</b> <a href="http://www.totousa.com">www.totousa.com</a>	Global Manufacturer of Residential and Commercial Plumbing Fixtures, vitreous china, <b>Washlet</b> toilet seats, <b>NeoRest</b> toilets and Accessories.
<b>Triangle Tube</b> <a href="http://www.triangletube.com">www.triangletube.com</a>	Commercial and Residential condensing combi and solo, wall mounted and floor mounted boilers, direct fired water heaters, indirect fired water heaters and heat exchangers.
<b>Water Control Corporation</b> <a href="http://www.watercontrolinc.com">www.watercontrolinc.com</a>	High-Capacity Ultra-Filtration for Legionella & Pathogen control, rainwater reclamation systems with ultraviolet or ozone purification, high purity water systems, water softeners, water filters.
<b>Waterless Company</b> <a href="http://www.waterless.com">www.waterless.com</a>	<b>Waterless</b> “No Flush” vitreous china and fiberglass urinals with <b>EcoTrap</b> and <b>Blue Seal</b> liquid, <b>UTC Sentinel</b> sensor flushing systems. <b>Everprime</b> floor drain traps primer liquid. <b>Greencleen</b> chemicals.
<b>Xerxes</b> <a href="http://www.xerxes.com">www.xerxes.com</a>	Fiberglass Water and Wastewater storage solutions. Water storage, grease, oil, solids interceptors, and double wall decontamination tanks.
<b>Additional Products Distributed:</b> <a href="http://www.repsourcellc.com">www.repsourcellc.com</a>	Bathroom Partitions (solid plastic, baked enamel, stainless steel, laminate and phenolic), Bathroom Accessories, Lockers (solid plastic and metal), Water treatment products.

# LEGIONELLA:

Don't Manage the Symptoms. Control the Cause!



We remove Legionella & pathogens *before* they enter your plumbing and mechanical system.

## HIGH-CAPACITY ULTRAFILTRATION

*Point-of-Entry • Point-of-Use • Hot Water Recirc Treatment*



Where NATURE & SCIENCE meet.™

- 99.999% removal of Legionella and pathogens (3rd party-verified)
- A firewall for the entire building
- Drastic reductions in nutrients and biofilms
- 500 GPM+, minimal pressure loss
- Self-cleaning, long-lasting, low maintenance
- Automatic membrane integrity verification (Meets strict EPA guidelines)



**seccua**  
German Hollow-Fiber  
Membrane Technology



PROTECT YOUR FACILITY AND LEARN MORE AT [WATERCONTROLINC.COM](http://WATERCONTROLINC.COM)





Paired with Sloan High-Efficiency Flushometers, our Commercial Toilet and Urinal Systems take water efficiency to the next level.

All Sloan Flushometers are made from a high level of recycled material and are 100 percent recyclable.



Sloan Bio-Deck Sinks utilize natural materials such as corn cobs and other renewable domestic agricultural materials.

Dual-Flush Side Mount Retrofit is a fast, easy way to reduce water consumption.



Sloan Hands-Free Faucets promote cleanliness, hygiene and overall health benefits.



Monitoring Systems reduce operating costs and decrease water consumption.

## Water Power

To arrange a personal consultation, call us at **800.982.5839**.

Every day around the world, Sloan advanced integrated water management systems provide elegant, efficient and hygienic washroom solutions for any commercial environment.

**SLOAN®**

Water Connects Us™



**Advance Thermal Corp.**  
 Removable Insulation & Acoustic Covers

**Aerco**  
 Commercial Condensing Boilers  
 Commercial Condensing Water Heaters  
 Indirect & Semi-instantaneous Heaters

**Bell & Gossett**  
 Balance Valves  
*Automatic Flow Limiting*  
*Manual Flow Limiting*  
*Pressure Independent Control*

Hydronic Specialties  
 Expansion/Compression Tanks  
 Centrifugal Pumps

*Base Mounted*  
*Close Coupled*  
*Double Suction*  
*Horizontal Split Case*  
*In-Line*  
*Multi-Stage*  
 Heat Exchangers  
*Shell & Tube*  
*Plate Heat Exchangers*  
*Replacement Tube Bundles*

Heat Transfer Packages  
 Pressure Booster Systems  
 Submersible Pumps  
 Variable Speed Systems  
 Vertical Turbine Pumps

**Bobco**  
 Differential Gauge Kits

**Bock Water Heater**  
 Gas Fired Water Heater  
 Electric Water Heater  
 Oil Water Heater  
 Indirect Water Heater  
 Solar / Geo Thermal Water Heater  
 Electric Point of Use Water Heater

**BoilerMag**   
 Magnetic Filters  
 Basic System Chemical Solutions

**Cemline Corp.**  
 ASME Tanks  
 Boiler Blowdown Separators  
 Condensate Coolers  
 Hot Water Storage Heaters  
 Packaged Water Heaters  
 Replacement Tube Bundles Stone  
 Steel Lined Tanks  
 Unfired Steam Generators

**Danfoss**  
**Greater Toledo Area**  
 Variable Frequency Drives Motor  
 Soft Starters

**Domestic Pump**  
 Boiler Feed Systems  
 Condensate Return Pumps  
 Pressure Powered Pumps  
 Vacuum Pumps

**Dow Heat Transfer Fluids**  
 DOWTHERM™ SR-1 Ethylene Glycol  
 DOWFROST™ HD Propylene Glycol

**Dri-Steam**  
**Greater Toledo Area**  
 Steam Injection Humidifiers  
 Gas To Steam Humidifiers  
 Steam To Steam Humidifiers  
 Electric Steam Humidifiers  
 Evaporative Humidifiers  
 Ultrasonic Fog Humidifiers

**Duravent**  
**Northern & Central Ohio**  
 High Performance Chimneys & Vents

**Goulds / G&L Commercial**  
 End Suction Pumps  
 Vertical Multi-stage  
 Pressure Booster Systems  
 Vortex Waste Water

**Griswold Controls**  
 Automatic Balance Valves  
 Manual Balance Valves  
 Pressure Independent Control  
 Valves Coil Hook-up Kits

**General Water Systems**  
 Chemical Free Water Treatment  
 Centrifugal Separators

**Hoffman Specialties**  
 Steam Traps & Specialties  
 Condensate Return Pumps  
 Pressure Regulating Valves

**Kadant Johnson**  
 Pressure Powered Pumps

**McDonnell & Miller**  
 Boiler Safety Controls  
 Level Controls  
 Flow Switches


**Metraflex Company**  
 Flexible Pump Connectors  
 Expansion Joints & Guides  
 Non-slam Check Valves  
 Ball & Butterfly Valves

**Miljoco**  
 Pressure Gauges  
 Thermometers  
 Accessories

**Niles Steel Tank**  
**Greater Toledo Area**  
 Glass Lined & Steel Storage Tanks

**NTI**  
 Residential/Commercial Condensing Boilers  
 Residential/Commercial Condensing Water Heaters

**Peterson Equipment Co.**  
 Pressure / Temperature Test Plugs

 **ProPak Solutions**  
 Hot Water/Chilled Water Pump Skid Package  
 Heat Transfer Skid Package  
 Steam & Hydronic Boiler Skid Package  
 Air Cooled Chiller Skid Package  
 Water Heater Skid Package  
 Snowmelt Skid Package  
 Domestic Pressure Booster Package

 **PVI**  
**Northern & Central Ohio**  
 Gas Fired Water Heaters  
 Steam Fired Water Heaters  
 Multiple Energy Water Heaters  
 Oil & Oil/Gas Water Heaters  
 Storage Tanks  
 Water Quality  
 Digital Mixing Valves

**Rovanco**  
 Pre-insulated Pipe  
 Containment Pipe

**Tower Tech Cooling Towers**  
 High Efficiency Cooling Towers  
 HVAC Cooling Towers  
 Process Cooling Towers  
 Power Generation Cooling Towers

**Vertiflo**  
 Pedestal Mount – Sump Pumps  
 Base Mounted Pumps  
 Vertical Pumps

**Webster Engineering**  
**Greater Toledo Area**  
 Single & Dual Fuel Burners  
 Landfill Gas Burners  
 High Turndown Burners  
 Temp-A-Trim: Air Density Control System

**Wessels Company**  
 ASME & Glass Lined Storage Tanks Glycol Fill Systems  
 Engineered Tanks

# Replacing Your Water Heater Every Few Years is Not Our Business Plan



Conquest<sup>®</sup> condensing, gas-fired water heaters are constructed from AquaPLEX<sup>®</sup> duplex stainless steel so they're corrosion-resistant in potable water at any temperature. Available in 199-1000 MBH, Conquest provides even more BTUs in small spaces and fits through a standard 36-inch doorway. With a thermal efficiency of up to 96%, long product life and a 15-year tank and heat exchanger warranty, you can't afford not to have one.

Call R.L. Deppmann or visit our Monday Morning Minutes blog at [deppmann.com](http://deppmann.com) for information on PVI Water Heaters

800.589.6120



800.784.8326 | [pvi.com](http://pvi.com)














(440)-944-7500

clesales@mwspec.com

29315 Clayton Ave.  
Wickliffe, Ohio 44092


www.mwspec.com



American Society of Plumbing Engineers

March 20-23, 2025  
Rosemont (Chicago), IL

Registration Is Open for ASPE's March  
2025 MedGas Workshop



education.aspe.org

ASPE Launches a New Educational  
Offering: MedGas Basics Classes



#### COLUMBUS OFFICE

4501 SUTPHEN CT  
HILLIARD, OH 43026  
PHONE - (614) 876-2477  
FAX - (614) 876-0238  
orders@bwassouth.com

#### CINCINNATI OFFICE

10869 READING RD  
CINCINNATI, OH 45241  
PHONE - (513) 733-4771  
FAX - (513) 733-4867  
orders@bwassouth.com

#### CLEVELAND OFFICE

6111 CAREY DR UNIT 2 & 3  
VALLEY VIEW, OH 44125  
PHONE - (330) 655-9220  
FAX - (330) 655-9222  
noorders@bwassouth.com

WWW.BWASOUTH.COM / QUOTES@BWASOUTH.COM

MANUFACTURERS' REPRESENTATIVES OF THE HIGHEST QUALITY PLUMBING AND SPECIALTY BUILDING PRODUCTS



# VIEGA VALVES

**MORE SIZES.  
MORE MATERIALS.**

The leader in pressing just got bigger. That means all Viega connections on your upcoming jobs. Who doesn't like the sound of that?

**Dan Sabetta**

Technical Manager – Great Lakes Region



**SCAN  
WITH PHONE  
TO CONTACT**



**viega**



# HIGHLY-TRAINED PLUMBERS

**The Cleveland Plumbing Industry** actively promotes the most rigorous and effective standards for our local contractors in the plumbing and mechanical industry.



We can embrace these high standards because our plumbing technicians receive the finest and most comprehensive training in the world - allowing our Northeast Ohio contractors to deliver the finest products, service and installation in only the safest of environments.



## Working For Our Members:

- Plumbing Codes
- Medical Gas Training
- Back Flow Prevention
- Safety Services
- Labor Relations
- Education & Training
- Promotion
- Government Affairs

 **CLEVELAND  
PLUMBING**  
I N D U S T R Y

TOLL FREE: 855-CPI-4ALL (855-274-4255)

CLEVELANDPLUMBINGINDUSTRY.COM



# Trombold

Equipment Company

our website: [www.trombold.com](http://www.trombold.com)

*If you need to move water call  
us we can help!*

*Storm and sewage—Weil  
Domestic boosters - Delta P Carver  
Fire—Patterson*

Phone 216-663-8700 Fax 216-663-8702

**CHARLOTTE**  
PIPE AND FOUNDRY COMPANY

**NOW OFFERING  
EDGE HP IRON,<sup>TM</sup>**

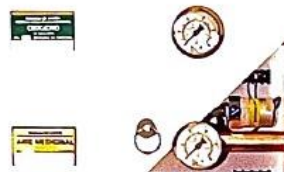
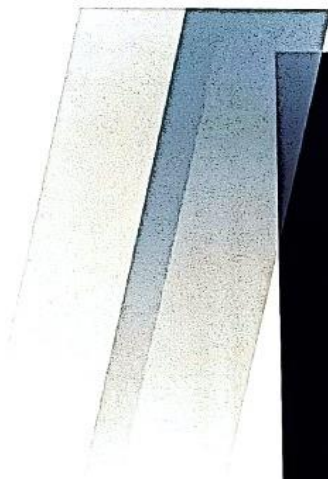
visit [www.charlottepipe.com](http://www.charlottepipe.com)

C. TODD GREEN  
Field Technical Representative  
501-352-6670 [todd.green@charlottepipe.com](mailto:todd.green@charlottepipe.com)

SPECIALLY COATED CAST  
IRON FOR AGGRESSIVE  
DWV APPLICATIONS.



Thomas Debersen - [tdeberson@medpipe.com](mailto:tdeberson@medpipe.com) - 614-353-8594 - [www.medpipe.com](http://www.medpipe.com)



**QUALITY PRODUCTS &  
SERVICES**



**PROFESSIONAL &  
EXPERIENCED STAFF**



**MULTIPLE LOCATIONS & ABUNDANT RESOURCES**

**MEDPIPE**

**ALL OF YOUR MEDICAL GAS PRODUCTS  
& SERVICES UNDER ONE ROOF**

Medical Gas System Equipment Sales, Inspection, Service & Repair



**PLUMBING HEATING SALES**

**Manufacturers Represented**

**AMERICH<sup>®</sup>**

**ARC**  
AKW

**BEMIS<sup>®</sup>**

**GERBER<sup>®</sup>**

**ion<sup>®</sup> Technologies**  
A division of Metropolitan Industries, Inc.

**navien**

**THERMASSOL<sup>®</sup>**  
Steam & Showering Systems

**Fipi USA**

**viega**

**ZILMET<sup>®</sup>**  
globally renowned

# UNEQUALED QUALITY.

## WOODFORD ROOF HYDRANTS: RELIABLE ROOFTOP WATER.

- Heavy-duty cast iron mounting system can be installed by roofer; hydrant can be installed later.
- RHY2-MS freezeless hydrants automatically drain when shut off, even with hose attached.
- Easy to repair from top of unit without removing hydrant.
- Five-year limited warranty.

**RHY2-MS**  
Woodford roof  
hydrant plumbs  
directly to drain

**Woodford SRH**  
sanitary hydrant:  
no drain required!



## WOODFORD MODEL 68 FREEZELESS UNDERCOVER WALL HYDRANT



- Model 68 freezeless wall hydrant protected by an integral locking cover
- Drains automatically—even with hose attached
- Replaceable locking stainless steel cover flips down for easy access
- Sleek, streamlined design
- Easier to install than recessed box hydrants



Service • Support • Supply

Manufacturer's Representatives

7860 North Central Drive Lewis Center, OH 43035  
740-549-1516 740-548-0985 (Fax)

WOODFORD



**WOODFORD  
MANUFACTURING COMPANY**  
Excellence. *Always.*

800.621.6032 • [www.woodfordmfg.com](http://www.woodfordmfg.com)





# A TRUSTED GLOBAL LEADER IN DIGITAL HOT WATER INNOVATION

Represented locally by:

**CRAIG MCDOWELL**

**Call Today! (440) 808-2280**

**[craig@omarmcdowell.com](mailto:craig@omarmcdowell.com)**

# OMC

**OMAR MCDOWELL COMPANY  
SINCE 1912**



**[armstronginternational.com](http://armstronginternational.com)**



Premier manufacturer of plumbing valves including PRV's, control valves, backflow preventers, butterfly valves, hydronic heating valves, quick-connect fittings, water pex, drainage, & pure water filtration.

---



Products for the fire protection, irrigation, and waterworks markets. Backflow preventers, control valves, in-building risers, pre-assembled valve station products.



Manufacturers of stainless steel drainage systems. Product ranges from standardized products to customized drains.

---



Plumbing flange design & manufacturing, wholesale distribution and installation services to the plumbing and mechanical piping Industry.



The world's leading provider of power tools, hand tools, and jobsite equipment.

---



The world's leading provider of flexible stainless steel connectors for natural/LP gas and fluid conveyance applications.



Manufacturers of eyewash and drench shower systems for commercial, hospital, and industrial uses.

---



An industry leader in manufacturing backflow prevention assemblies.



Manufacturer of oil/water separator, wastewater treatment systems products.

---



Offers plumbing hangers, straps, fasteners and other solutions for installation of plumbing products and pipe.



Enclosures for backflow preventers for outdoor installations.





Utility control system to promote safety for the student as well as the instructor in the science laboratory learning environment.



Leading manufacturer of plumbing tools and equipment.



MAPA Products has been a driving force in the manufacturing of rooftop supports.



Mueller Steam Specialty is the world's largest supplier of strainers and the number one provider of specialty products serving the valve industry.



Worldwide leader of bottled and pressure water coolers, providing point-of-use filtration equipment, drinking fountains, dehumidifiers and water pitcher systems.



Acid waste & high purity pipe and fitting systems.



Manufacturers of thermostatic mixing valves for building, point-of-use and emergency equipment, tub/shower systems with pressure balancing, thermostatic, or combination shower controls.



Leader in complete control solutions for radiant floor and baseboard heating systems, multi-stage boiler plants, and automatic snow melting systems.



Since 1950, Wal-Rich has been servicing the Plumbing Wholesaler with the finest in plumbing, heating, industrial and hardware specialties.



Flexible corrugated piping systems for natural gas and propane, as well as iron fittings. Applications include single & multiple-family residential as well as industrial and commercial buildings.

# IntelliStation™:

**The smarter way  
to deliver tempered water**



## **The Intelligent Water Mixing and Recirculation System**

The IntelliStation™ provides unmatched levels of control over hot water delivery in commercial and institutional buildings.

- Precise digital control to  $\pm 2^{\circ}\text{F}$
- Smart, easy-to-use controller with color touchscreen
- BAS integration
- Access to rich system data
- Integrated pump control for reliable, consistent temperatures
- Easy commissioning, repair, and management
- Sanitization mode allows for high temperature system purges
- Compliant with lead free legislation requirements

Learn about the smarter water mixing solution at  
[PowersControls.com/IntelliStation](http://PowersControls.com/IntelliStation)

**POWERS™**  
A Watts Water Technologies Company





# Why Join ASPE

When you join ASPE, you become part of a worldwide family of engineering and design professionals and gain immediate access to their combined technical knowledge and industry support.



Professional Growth & Development



Networking



Industry Publications



Industry Events



Scholarship Program

Join ASPE Today

## Get Involved

### Chapters

ASPE has more than 7,400 members.  
Find your local ASPE Chapter.



### AYP

Establish contacts and share experiences.



### WOA

Engaging, retaining and advancing women in the industry.





## RC FREY & ASSOCIATES

MANUFACTURERS' REPRESENTATIVE

REPRESENTING THE FINEST IN  
COMMERCIAL PLUMBING FOR MORE  
THAN 50 YEARS

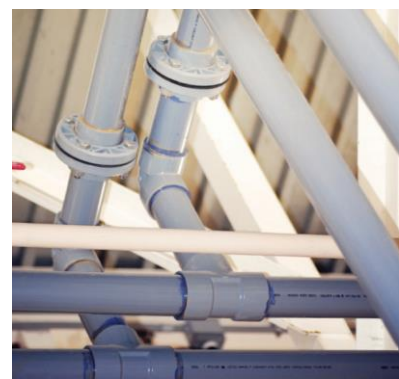
330-425-2555 — [WWW.RCFREY.COM](http://WWW.RCFREY.COM)



# Spec with Confidence



PRECISELY ENGINEERED. REAL-WORLD TESTED.



Corzan® Material and Piping Solutions offer a complete tie-in to tap solution made up of Schedule 80 pipe & fittings, flanges, valves, and specialty adapter fittings including: MIP Threads x CPVC, FIP Threads x CPVC, Stub Out Elbows, and Male Sweat Adapters. Potable water systems designed with Corzan CPVC offer the best solution for reducing biofilm buildup and the growth of Legionella while being immune to degradation caused by standard disinfection procedures.

## Performance Ratings

- Plenum rated for water distribution piping (ASTM E84-23)
- Conforms to NSF International Standards 61 and 14
- Withstands ANSI/ASHRAE Guideline 188 water treatment protocols
- Innately resistant to corrosion, pitting and scaling
- Resists biofilm that can lead to waterborne illness
- Pressure rated for temperatures up to 200°F

## Diverse Applications

- Academic Buildings
- Multi-Family Housing
- Hotels
- Hospitals
- Data Centers
- Power Generation
- Wastewater Treatment Plants
- Chemical Processing Facilities





# **MASTROIANNI & ASSOCIATES, INC.**

Manufacturers' Representative of Products for the Mechanical Trades Since 1984

## **HOT WATER PRIMETER HEATING, STEAM, ELECTRIC RADIATORS, TOWEL WARMERS**

RUNTAL RADIATORS ..... [www.runtalnorthamerica.com](http://www.runtalnorthamerica.com)

## **LINK SEALS, PIPE SLEEVES, CASING SPACERS, END SEALS**

LINK SEAL , GARLOCK , PSI, THUNDERLINE, GPT ..... [www.linkseal.com](http://www.linkseal.com)

## **BARCO BALL JOINTS, PACKED SLIP JOINTS, BELLOWS EXPANSION JOINTS, VENTURI FLOW METERS, SEISMIC 'V'-LOOPS**

HYSpan PRECISION PRODUCTS ..... [www.hyspan.com](http://www.hyspan.com)

## **HEAT EXCHANGERS (SHELL & TUBE), AIR & DIRT SEPARATORS, HYDRAULIC SEPARATORS, AUTOMATIC AIR VENTS, PUMPS, SUCTION DIFFUSERS, TRIPLE DUTY VALVES**

THRUSH CO ..... [www.thrushco.com](http://www.thrushco.com)

## **DOMESTIC WATER BOOSTER SYSTEMS, SKID MOUNTED HVAC PACKAGES**

TIGERFLOW SYSTEMS ..... [www.tigerflow.com](http://www.tigerflow.com)

## **HYDRONIC BALANCING VALVES ( AUTOMATIC & MANUAL), "COIL PAKS", HOSE PAKS, BYPASS KITS**

NEXUS VALVE ..... [www.nexusvalve.com](http://www.nexusvalve.com)

## **HUMIDIFIERS (STEAM, ELECTRIC, GAS, DISPERSION MANIFOLDS)**

PURE HUMIDIFIER ..... [www.purehumidifier.com](http://www.purehumidifier.com)

## **EXPANSION TANKS, BUFFER TANKS, AIR SEPARATORS, GLYCOL MAKE-UP SYSTEM**

JOHN WOOD CO ..... [www.johnwood.com](http://www.johnwood.com)

## **SUMP PUMPS & OIL MINDER / DETECTION SYSTEMS CONDENSATE / BOILER FEED / VACUUM PUMP PACKAGES**

STANCOR PUMPS..... [www.stancorpumps.com](http://www.stancorpumps.com)

FEDERAL PUMPS CO..... [www.federalpumps.com](http://www.federalpumps.com)

## **PLATE & FRAME HEAT EXCHANGERS**

POLARIS..... [www.polarisphe.com](http://www.polarisphe.com)

## **PUMPS: END SUCTION, IN-LINE, RECIRCULATION**

THRUSH PUMP..... [www.thrushco.com](http://www.thrushco.com)

## **CHECK VALVES, STRAINERS, BUTTERFLY VALVES**

TITAN / MUELLER..... [www.titanfci.com](http://www.titanfci.com)

BONOMI ..... [www.bonominorthamerica.com](http://www.bonominorthamerica.com)

## **FLEX CONNECTORS, EXPANSION JOINTS, NESTED LOOPS, PIPE GUIDES**

ENGINEERED FLEXIBLE PRODUCTS..... [www.general-rubber.com](http://www.general-rubber.com)

GENERAL RUBBER CO..... [www.engineeredflex.com](http://www.engineeredflex.com)

## **VIBRATION ISOLATION - SPRING HANGERS, VIBRATION CURB BASES, INERTIA BASES**

VIBRATION ELIMINATOR CO ..... [www.veco-ny.com](http://www.veco-ny.com)

## **PRE-INSULATED PIPE SHIELDS**

VALUE ENGINEERED PRODUCTS ..... [www.valueng.com](http://www.valueng.com)

## **THERMOMETERS, PRESSURE GAUGES, P/T PLUGS, GAUGE ACCESSORIES**

WEKSLER GLASS THERMOMETER CORP..... [www.wekslerglass.com](http://www.wekslerglass.com)

7601 First Place Drive ~ Ste A- 13 ~ Phone: 440.786.1100 ~ Fax: 440.786.1103

[www.mastroiannihvac.com](http://www.mastroiannihvac.com)



# THE MIFAB ADVANTAGE

IN STOCK AND READY TO SHIP!



**PINNACLE SALES**  
Phone: 800-253-7010  
Email: sales@pinnacleseps.com  
WWW.PINNACLESEPS.COM



#### QUICK HUB COUPLINGS:

NO NEED TO SEPARATE THE GASKET FROM THE SHIELD - INSTALLATION READY. JUST PUSH ON THE PIPE!



#### TOP SET STRAINERS:

BRING THE STRAINER TO GRADE WITHOUT REMOVING THE GRATE AFTER THE CONCRETE POUR. JUST TURN THE THREE PHILLIPS HEAD SCREWS!



#### SIPHONIC DRAINAGE:

PIPES ARE FLUSHED AT HIGH VELOCITY AND SELF-CLEAN AS AIR EXITS THE SYSTEM. PIPE DIAMETER & MATERIALS ARE REDUCED BY HALF!



#### GRP TRENCH:

RIGID LIKE POLYMER CONCRETE BUT NOT FRAGILE. COMPETITORS MAXIMUM TEMPERATURE AT 140°F. OUR MAXIMUM TEMPERATURE AT 212°F!



#### RPZ AND DC BACKFLOW:

ACCESS BOTH CHECKS FROM ONE ACCESS POINT. ALL STAINLESS STEEL BODY AND SHORTEST LAY LENGTH!



#### HDPE INTERCEPTORS:

LIFETIME WARRANTY. GENERIC CUT TO FIT ADS RISERS. PDI AND ASME APPROVED!

WWW.MIFAB.COM

**ASPE<sup>24</sup>** Chapter  
Award of Merit

2023 – 2024 Recipient



\*\* Local Chapters are not authorized to speak for the Society