

Cleveland Chapter of The American Society of Plumbing Engineers
June 2026

CHAPTER OFFICERS

President

JOHN VARGA, P.E.
Scheesser Buckley Mayfield, Inc.
Email: jvarga@sbmce.com
(330) 526-2715

V.P. Technical

MARLON WRIGHT P.E., CPD
T/E/S Engineering
Email: mwright@tesengineering.com
(440) 871-2410

V.P. Legislative

CHRIS STACKHOUSE
Rep Source, LLC
Email: cstackhouse@repsourcecellc.com
(614) 315-6606

V.P. Membership

FRANK MASTROIANNI JR.
Mastroianni & Associates, Inc.
Email: frankjr@mastroiannihvac.com
(440) 786-1100

Treasurer

KEVIN NOBLE, P.E., LEED AP
Scheesser Buckley Mayfield, Inc.
Email: knoble@sbmce.com
(330) 526-2714

Administrative Secretary

DAN EVANS, P.E., CPD, GPD
HEI Engineering Group, Inc.
Email: evans@hei-engineering.com
(330) 262-0042

Corresponding Secretary

JOE DEUCHER, CPD
Stantec
Email: joseph.deucher@stantec.com
(216) 298-0641

Affiliate Liaison

KATHY KIRSCHNICK
Johnson Controls
Email: kkirschnick123@gmail.com
(216) 904-6656

AYP Group Liaison

TY MYGRANTS
DLR Group
Email: tmygrants@dlrgroup.com
(216) 522-1350

WOA Group Liaison

KATHY KIRSCHNICK
Johnson Controls
Email: kkirschnick123@gmail.com
(216) 904-6656

Chapter Ambassador

KEITH BUSH FASPE, CPD, GPD, CSI
Email: kbush@wright-engineering.com
(330) 815-9368

Newsletter Editor

MICHAEL DRAB
Thorson Baker & Associates, Inc.
Email: mdrab@thorsonbaker.com
(330) 659-6688

From the President:



I would like to thank Seth Markwood with Thermaco - Trapzilla for being our guest speaker at the May Technical Meeting.

Congratulations to all the Cleveland Chapter Officers on their re-election, and a special congratulations to our newly elected President, Joe Deucher!

I would also like to sincerely thank all the Cleveland Chapter Officers for their dedication, hard work, and volunteer service throughout my 12 years as President. It has truly been an honor to serve alongside such a committed and outstanding team.

Please welcome our newest members to the Cleveland Chapter, Kyle Wefing with RL Deppmann and Chris McDonald with Watts Water.

Registration is now OPEN! ASPE 2026 Convention & Expo is taking place in Oklahoma City, Oklahoma from October 8-14, 2026. Register at www.aspe.org.

Let us know if there are any specific topics you would like to see our chapter sponsor. We are always looking for new ideas. Remember, without membership and participation there is no local chapter.

Have a great summer!

Regards,
John A. Varga, P.E.
President, ASPE Cleveland Chapter





2026

golf outing

THURSDAY
AUGUST 6

9:30 am Shotgun Start
(Registration 8:30 am)

**Ironwood
Golf Course**

445 State Road
Hinckley, OH

- Individual Golfers - \$150 per person
- Join us for Dinner Only - \$50
- Foursome- \$600
- Hole Sponsorship - \$150
- Custom & Novelty Sponsorship - \$_____
- Create your own sponsorship -\$ _____
- Create Your Own Sponsorship - \$ _____

Includes golf, lunch & dinner, door prizes, and participation in event contests. All Sponsors will receive tournament recognition/signage.

Registration deadline is **Friday July 24, 2026**

Please mail this form & check to: ASPE Cleveland Chapter, C/O Kathy Kirschnick, P.O. Box 138 Avon, Ohio 44011. For sponsorship, outing details, to email this registration form, to inquire about discounts for multiple foursomes or PayPal requests, contact: **Kathy Kirschnick** at kkirschnick123@gmail.com (216) 904-6656.
Make all checks payable to ASPE Cleveland Chapter.

Company: _____ Golfers: _____

Contact: _____

Phone: _____

SPONSORSHIP:

Hole Sponsor: \$150 per hole

- Mention in the ASPE newsletter
- Sign on golf hole for sponsorship & listing on general sponsorship board
- Recognition at the dinner for their support.

Breakfast Sponsor: *SOLD*

Lunch Sponsor: \$350

- Mention in the ASPE Newsletter & 1 Free Full-Page Ad
- Special Signage at the club with their name on it.
- Recognition at the dinner for their support.

Beer Sponsor: *SOLD*

Hole in One Sponsor

- Mention in the ASPE newsletter & 1 Free Full-Page Ad
- Banner at the club with their name on it.
- Recognition at the dinner for their support.

Bloody Mary Sponsor \$500

- Mention in the ASPE newsletter & 1 Free Full-Page Ad
- Specialty Sign at the club with their name on it.
- Recognition at the dinner for their support.

Happy Hour Sponsor \$500

- Mention in the ASPE newsletter & 1 Free Full-Page Ad
- Specialty Sign at the club with their name on it.
- Recognition at the dinner for their support.

Longest Drive- Cash, Gift Card or Prize Donation \$100 value

- Mention in the ASPE newsletter
- Listing on General Sponsorship Board.
- Recognition at the dinner for their support.

Closest to the Pin-Cash, Gift Card or Prize Donation \$100 value

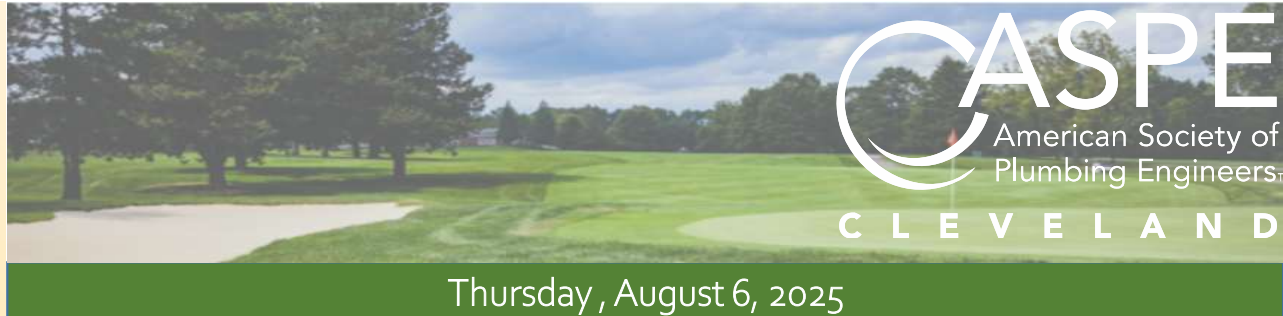
- Mention in the ASPE newsletter
- Listing on general sponsorship board..
- Recognition at the dinner for their support.

Longest Putt-Cash, Gift Card or Prize Donation \$100 value

- Mention in the ASPE newsletter
- Listing on General Sponsorship Board.
- Recognition at the dinner for their support.

Donations- Cash, Gift Card or Prize Donations

- Listing on General Sponsorship Board.
- Recognition at the dinner for their support.



Thursday, August 6, 2025

Ironwood Golf Course | 445 State Street Hinckley, Ohio

SPONSORSHIP FORM

Company Name: _____ Phone #: _____

Contact Name: _____ Phone #: _____

Type of Sponsorship: _____

HOLE SPONSORSHIP:

Provide Company Logo to Kathy Kirschnick: kkirschnick123@gmail.com

If you have two manufacturers that would like to sponsor a hole, please be sure to send in a copy of the forms for both companies.

Please send your checks made payable to ASPE Cleveland Chapter to:

Kathy Kirschnick, C/O ASPE, PO Box 138, Avon, Ohio 44011

PayPal link is available.

The deadline for registering for the golf outing or hole sponsorship is **July 24th**

Questions regarding registration forms, payments, sponsorship details or how to create your own sponsorship, please contact Kathy Kirschnick at (216) 904-6656 or kkirschnick123@gmail.com

PROUDLY PROVIDING THERMOSTATIC BALANCING SOLUTIONS FOR OVER 10 YEARS



Hot Water Recirculation

In 2012, CircuitSolver® was developed to conquer the challenges inherent to conventional manual balancing valves. As the market's first **thermostatic balancing valves** used for domestic hot water recirculation, CircuitSolver® balances a system based solely on temperature as opposed to pressure or flow to guarantee hot water at **every fixture**. Dynamically balancing a system, CircuitSolver® ultimately **ended complaints** about the lack of hot water, and eliminated balancing processes and callbacks.

Cold Water Recirculation

Last year, we implemented our thermal actuator technology into the CircuitSolver® Union Cold Water balancing valves. These valves are installed in domestic Cold Water recirculation systems to mitigate the risk of Legionella and other bacterial growth. Cold water recirculation is becoming more prominent in hospitals to reduce water stagnation and ensure residual chlorine is distributed but can be beneficial to any commercial building that could experience periods of low flow or non-use.



PINNACLESALES



www.pinnaclereps.com



(800) 253-7010



COLUMBUS OFFICE

4501 SUTPHEN CT
HILLIARD, OH 43026
PHONE - (614) 876-2477
FAX - (614) 876-0238
orders@bwasouth.com

CINCINNATI OFFICE

10869 READING RD
CINCINNATI, OH 45241
PHONE - (513) 733-4771
FAX - (513) 733-4867
orders@bwasouth.com

CLEVELAND OFFICE

6111 CAREY DR UNIT 2 & 3
VALLEY VIEW, OH 44125
PHONE - (330) 655-9220
FAX - (330) 655-9222
noorders@bwasouth.com

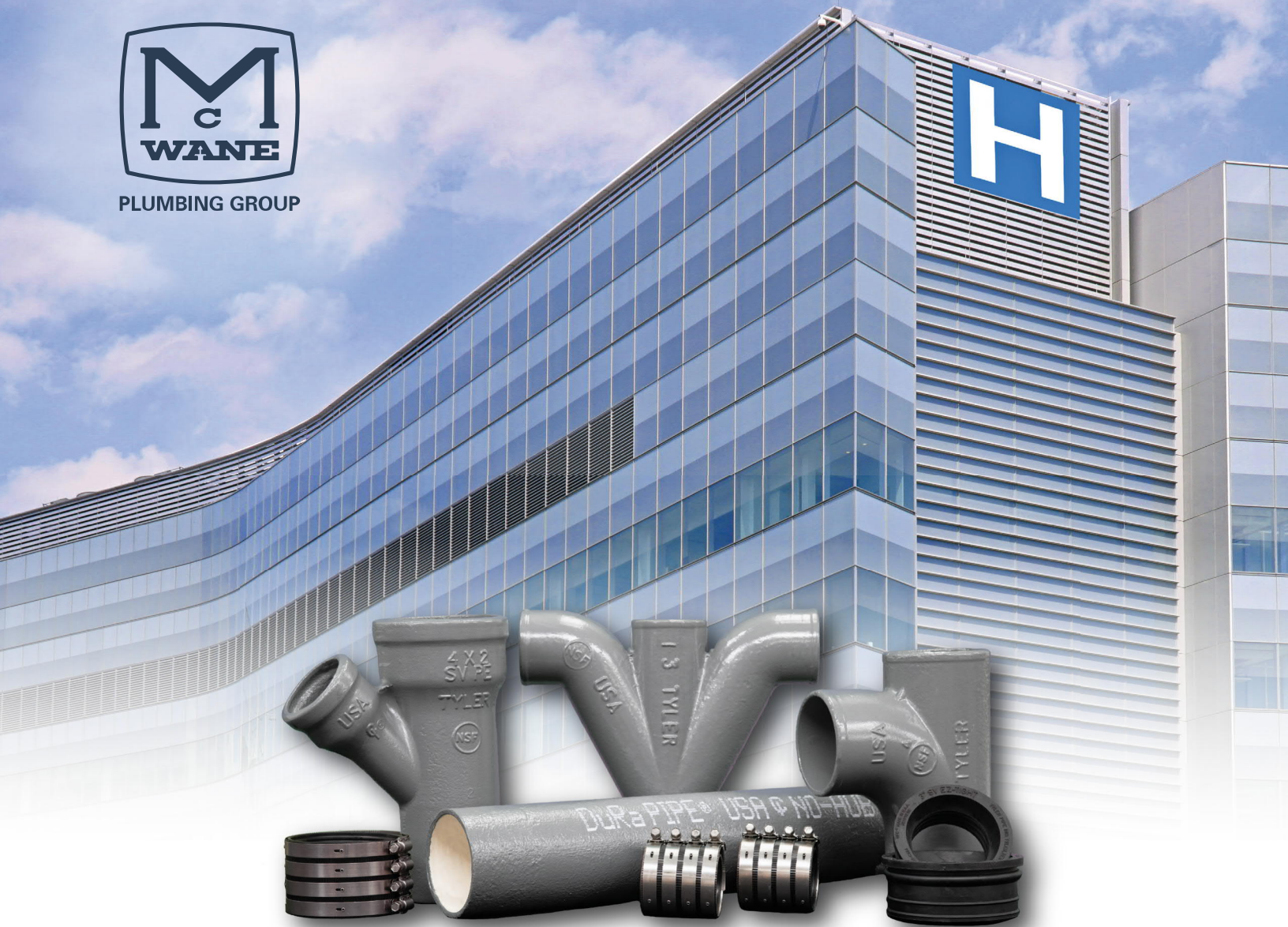
WWW.BWASOUTH.COM / QUOTES@BWASOUTH.COM

MANUFACTURERS' REPRESENTATIVES OF THE HIGHEST QUALITY PLUMBING AND SPECIALTY BUILDING PRODUCTS





PLUMBING GROUP



Superior Performance & System Reliability

DuRa Pipe™ enhanced epoxy coating applied to cast iron soil pipe and fittings. It is well suited for aggressive DWV applications where greater performance is required.



ABIFoundry.com



Anaco-Husky.com



PIPE & COUPLING

TylerPipe.com

MASTROIANNI & ASSOCIATES, INC.

Manufacturers' Representative of Products for the Mechanical Trades Since 1984

HOT WATER PRIMETER HEATING, STEAM, ELECTRIC RADIATORS, TOWEL WARMERS

RUNTAL RADIATORS www.runtalnorthamerica.com

LINK SEALS, PIPE SLEEVES, CASING SPACERS, END SEALS

LINK SEAL , GARLOCK , PSI, THUNDERLINE, GPT www.linkseal.com

BARCO BALL JOINTS, PACKED SLIP JOINTS, BELLOWS EXPANSION JOINTS, VENTURI FLOW METERS, SEISMIC 'V'-LOOPS

HYSpan PRECISION PRODUCTS www.hyspan.com

HEAT EXCHANGERS (SHELL & TUBE), AIR & DIRT SEPARATORS, HYDRAULIC SEPARATORS, AUTOMATIC AIR VENTS, PUMPS, SUCTION DIFFUSERS, TRIPLE DUTY VALVES

THRUSH CO www.thrushco.com

DOMESTIC WATER BOOSTER SYSTEMS, SKID MOUNTED HVAC PACKAGES

TIGERFLOW SYSTEMS www.tigerflow.com

HYDRONIC BALANCING VALVES (AUTOMATIC & MANUAL), "COIL PAKS", HOSE PAKS, BYPASS KITS

NEXUS VALVE www.nexusvalve.com

HUMIDIFIERS (STEAM, ELECTRIC, GAS, DISPERSION MANIFOLDS)

PURE HUMIDIFIER www.purehumidifer.com

EXPANSION TANKS, BUFFER TANKS, AIR SEPARATORS, GLYCOL MAKE-UP SYSTEM

JOHN WOOD CO www.johnwood.com

SUMP PUMPS & OIL MINDER / DETECTION SYSTEMS CONDENSATE / BOILER FEED / VACUUM PUMP PACKAGES

STANCOR PUMPS..... www.stancorpumps.com

FEDERAL PUMPS CO..... www.federalpumps.com

PLATE & FRAME HEAT EXCHANGERS

POLARIS www.polarisphe.com

PUMPS: END SUCTION, IN-LINE, RECIRCULATION

THRUSH PUMP..... www.thrushco.com

CHECK VALVES, STRAINERS, BUTTERFLY VALVES

TITAN / MJELLER..... www.titanfci.com

BONOMI www.bonominorthamerica.com

FLEX CONNECTORS, EXPANSION JOINTS, NESTED LOOPS, PIPE GUIDES

ENGINEERED FLEXIBLE PRODUCTS..... www.general-rubber.com

GENERAL RUBBER CO..... www.engineeredflex.com

VIBRATION ISOLATION - SPRING HANGERS, VIBRATION CURB BASES, INERTIA BASES

VIBRATION ELIMINATOR CO www.veco-ny.com

PRE-INSULATED PIPE SHIELDS

VALUE ENGINEERED PRODUCTS www.valueng.com

THERMOMETERS, PRESSURE GAUGES, P/T PLUGS, GAUGE ACCESSORIES

WEKSLER GLASS THERMOMETER CORP..... www.wekslerglass.com

7601 First Place Drive ~ Ste A- 13 ~ Phone: 440.786.1100 ~ Fax: 440.786.1103

www.mastroiannihvac.com



107 Cypress Street S.W. Reynoldsburg, OH 43068
 Phone: 740-927-6880 Fax: 740-927-4545
www.RepSourceLLC.com

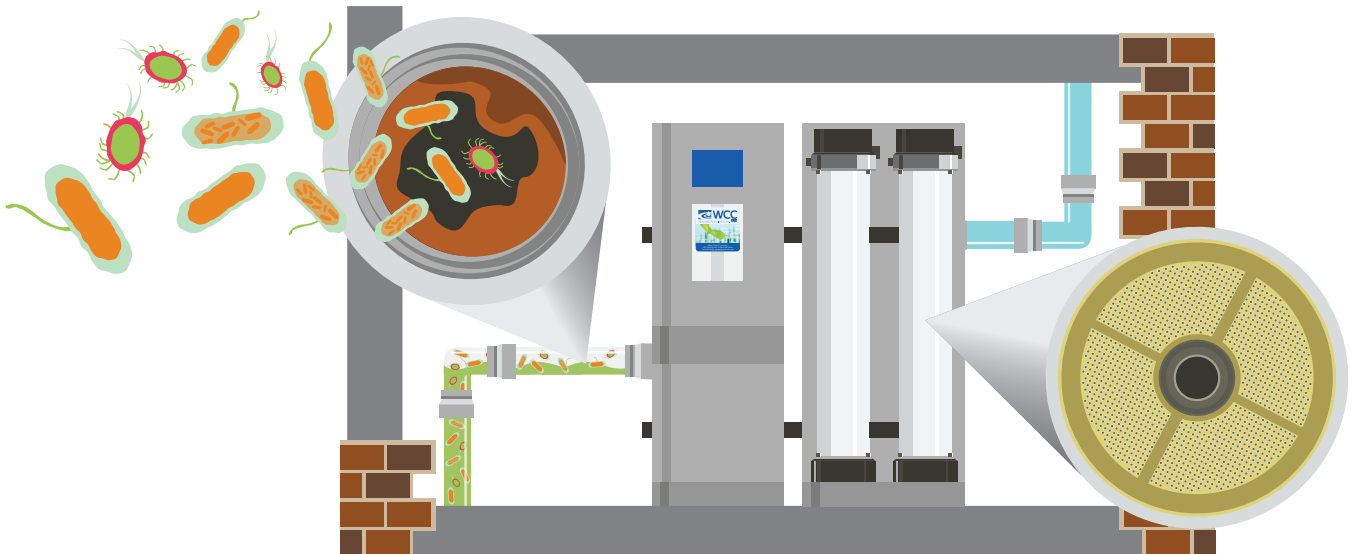
Manufacturers Representatives Serving Plumbing, Mechanical, Electrical, Architectural and Water Treatment Industries. Representing the following product lines:

Ohio Market

A Better Idea/Quick Block/EZ Sleeper www.pipeease.com	<i>E-Z Sleeper / Quick Block / Pipe Ease</i> – Rooftop pipe and equipment support blocks and deck flanges.
AB&I Foundry www.abifoundry.com	No-Hub and Hub and Spigot Cast Iron Soil Pipe and Fittings
American Standard www.americanstandard-us.com	Founded in 1875, American Standard has been the award-winning leader in Residential and Commercial Toilets, Sinks, Faucets, Showers, Flush Valves, Bidet Seats, Bathtubs and Walk-in Tubs.
Anaco-Husky www.anaco-husky.com	American made complete line of heavy-duty <i>Husky</i> high performance and standard no-hub couplings, <i>Cremco</i> specialty transitional couplings and service weight gaskets.
Apollo Valves Backflow www.apollovalves.com	<i>Apollo Valves</i> backflow prevention products for plumbing, fire protection, waterworks and irrigation.
Atlas Filtri https://us.atlasfiltri.com	Water filtration solutions including: Filter Housings, Cartridges, Whole House and Tankless Water Heater Complete Kits, Hydra Self-Cleaning, Reverse Osmosis and <i>ScaleArmor</i> Polyphosphate.
Bradley www.bradleycorp.com	<i>Washbar</i> all in one hand washing, wash fountains, lavatory systems, <i>Navigator</i> thermostatic mixing valves, showers, safety equipment, <i>Verge</i> faucets and <i>Evero</i> natural quartz, safety/skid water heaters.
Elkhart Products www.elkhartproducts.com	<i>Elkhart Products</i> wrought copper tube fittings, cast fittings and EPC engineered push-fit fitting brands include <i>TECTITE</i> and <i>CopperLOC</i> .
DXV www.dvx.com	Luxury Bath and Kitchen products covering the last fifteen decades to include design elements from Classic, Golden, Modern and Contemporary periods.
Franke www.franke.com/us/en/water-solutions/products.html www.franke.com/us/en/home-solutions.html	Commercial, Institutional, Healthcare, Scullery, Utility, Vanity and Handwash stainless steel sinks, faucets and accessories. Residential and Luxury <i>Mythos</i> and <i>Maris</i> stainless steel, granite, fireclay, work center and farmhouse kitchen sinks, faucets and specialty products.
Grohe www.grohe.us	Leading global brand of Faucets, Showers, Tub Faucets, Toilets, Sinks, Bathroom Accessories, Smart Home <i>Sense and Sense Guard</i> products and Kitchen Faucets, Water Systems and Accessories.
Kemper Water Control www.kemperwatercontrol.com	Engineered <i>Flow Splitter</i> and <i>Balancing Valve</i> system technology for domestic water and Legionella mitigation solutions.
Liberty Pumps www.libertypumps.com	Sump, drain and condensate, utility, transfer, effluent and sewage pumps, <i>Omnivore</i> and <i>ProVore</i> grinders, <i>Accent II</i> macerating toilet system and engineered pump system packages.
Marlo www.marlo-inc.com	Commercial & industrial water softeners, media filters, reverse osmosis, dealkalizers, deionized and EDI electro-deionized water treatment equipment.
Plumberex www.plumberex.com	<i>Pro-Extreme</i> , <i>Trap Gear</i> , <i>Handy Shield Maxx</i> and <i>Clear Shield</i> lavatory trap and riser insulation kits. <i>Mushroom Flange</i> and <i>Floor Sink Carrier</i> specialty products.
Raychem / Chemelex www.chemelex.com	<i>HWAT</i> self-regulating heating cable system for domestic hot water, <i>XL-Trace</i> , <i>Gardian</i> and <i>WinterGard</i> freeze protection cable, <i>Pyrotenax MI</i> and <i>Electromelt</i> snow and anti-icing cable, <i>IceStop</i> , <i>RIM</i> and <i>FrostGuard</i> roof and gutter de-icing cable, <i>RaySol</i> , <i>NuHeat</i> floor warming and freezer frost heave cable.
Schott Scientific Glass / Kimax www.us.schott.com/en-us	Glass piping for acid waste and containment piping systems. <i>Knight-Ware</i> acid neutralizing sumps.
Stiebel Eltron www.stiebel-eltron-usa.com	Electric tankless/instantaneous/mini tank water heaters for commercial, residential and industrial applications, emergency shower eyewash heaters, <i>Accelera</i> E heat pump water heaters, hot water tanks for solar, geothermal, and hydronic, instant hot water dispensers, electric fan heaters and hand dryers.
Tight Seal Gasket www.tightsealgasket.com	Toilet & urinal setting with Innovative, flexible design, sticky, reusable, elastomer toilet & urinal gaskets. Compresses up to 50%. Will not break or become brittle. Allows movement without leaking.
WCC - Water Control Corporation www.watercontrolinc.com	High-Capacity Ultra-Filtration for Legionella & Pathogen control, rainwater reclamation systems with ultraviolet or ozone purification, high purity water systems, water softeners, water filters.
Wavin/Orbia https://wavin.us	Smart water management solutions, water reuse systems, PVC, CPVC and PEX plastic pipes and fittings for plumbing, waste and sewer systems, roof drainage, stormwater management, and underfloor heating.
Xerxes www.xerxes.com	Fiberglass Wastewater storage solutions. Grease, oil, solids interceptors, and double wall decontamination tanks.
Additional Products Distributed: www.repsourcellc.com	Bathroom Partitions (solid plastic, baked enamel, stainless steel, laminate and phenolic), Bathroom Accessories, Lockers (solid plastic and metal), Specialty Water Treatment solutions.

LEGIONELLA:

Don't Manage the Symptoms. Control the Cause!



We remove Legionella & pathogens *before* they enter your plumbing and mechanical system.

HIGH-CAPACITY ULTRAFILTRATION

Point-of-Entry • Point-of-Use • Hot Water Recirc Treatment



Where NATURE & SCIENCE meet.™ 

- 99.999% removal of Legionella and pathogens (3rd party-verified)
- A firewall for the entire building
- Drastic reductions in nutrients and biofilms
- 500 GPM+, minimal pressure loss
- Self-cleaning, long-lasting, low maintenance
- Automatic membrane integrity verification (Meets strict EPA guidelines)




seccua®
German Hollow-Fiber
Membrane Technology



PROTECT YOUR FACILITY AND LEARN MORE AT WATERCONTROLINC.COM



T&S has your **plumbing** solutions.

Discover the lasting reliability of T&S. From hose reels to sensor faucets, lab equipment to high-end fixtures, T&S offers all the plumbing products you need, with reliability built in. Contact your representative today to learn how T&S can outfit any facility, or visit tsbrass.com.



T&S plumbing products represented in Cleveland by: Midwest Spec., LLC • 513-353-9191

CHARLOTTE
PIPE AND FOUNDRY COMPANY

**NOW OFFERING
EDGE HP IRON,TM**

visit www.charlottepipe.com

C. TODD GREEN
Field Technical Representative
501-352-6670 todd.green@charlottepipe.com

SPECIALLY COATED CAST IRON FOR AGGRESSIVE DWV APPLICATIONS.

Midwest Spec.

T&C PLASTICS

SAFE-T-COVER
BY HYDRONICS
ENCLOSURES DESIGNED FOR THE WORLD'S WATER SYSTEMSSM

CHROMALOX
Advanced Thermal Technologies

Watson McDaniel

Guardian

HEAT-TIMER CORPORATION

Brimar INDUSTRIES

(440)-944-7500

clesales@mwspec.com

29315 Clayton Ave.
Wickliffe, Ohio 44092

www.mwspec.com

MedGas Workshop
American Society of Plumbing Engineers

**Now In-Person
AND
Online!**

HIGHLY-TRAINED PLUMBERS

The Cleveland Plumbing Industry actively promotes the most rigorous and effective standards for our local contractors in the plumbing and mechanical industry.



We can embrace these high standards because our plumbing technicians receive the finest and most comprehensive training in the world - allowing our Northeast Ohio contractors to deliver the finest products, service and installation in only the safest of environments.



Working For Our Members:

- Plumbing Codes
- Medical Gas Training
- Back Flow Prevention
- Safety Services
- Labor Relations
- Education & Training
- Promotion
- Government Affairs

 **CLEVELAND
PLUMBING**
I N D U S T R Y

TOLL FREE: 855-CPI-4ALL (855-274-4255)

CLEVELANDPLUMBINGINDUSTRY.COM

Advance Thermal Corp.

Removable Insulation & Acoustic Covers

Aerco

 Commercial Condensing Boilers
 Commercial Condensing Water Heaters
 Indirect & Semi-instantaneous Heaters

Bell & Gossett

Balance Valves

Automatic Flow Limiting
Manual Flow Limiting
Pressure Independent Control

 Hydronic Specialties
 Expansion/Compression Tanks
 Centrifugal Pumps

Base Mounted
Close Coupled
Double Suction
Horizontal Split Case
In-Line
Multi-Stage

Heat Exchangers

Shell & Tube
Plate Heat Exchangers
Replacement Tube Bundles

 Heat Transfer Packages
 Pressure Booster Systems
 Submersible Pumps
 Variable Speed Systems
 Vertical Turbine Pumps

Bobco

Differential Gauge Kits

Bock Water Heater

 Gas Fired Water Heater
 Electric Water Heater
 Oil Water Heater
 Indirect Water Heater
 Solar / Geo Thermal Water Heater
 Electric Point of Use Water Heater

BoilerMag

 Magnetic Filters
 Basic System Chemical Solutions

Cemline Corp.

 ASME Tanks
 Boiler Blowdown Separators
 Condensate Coolers
 Hot Water Storage Heaters
 Packaged Water Heaters
 Replacement Tube Bundles Stone
 Steel Lined Tanks
 Unfired Steam Generators

Danfoss
Greater Toledo Area

 Variable Frequency Drives Motor
 Soft Starters

Domestic Pump

 Boiler Feed Systems
 Condensate Return Pumps
 Pressure Powered Pumps
 Vacuum Pumps

Dow Heat Transfer Fluids

 DOWTHERM™ SR-1 Ethylene Glycol
 DOWFROST™ HD Propylene Glycol

Dri-Steam
Greater Toledo Area

 Steam Injection Humidifiers
 Gas To Steam Humidifiers
 Steam To Steam Humidifiers
 Electric Steam Humidifiers
 Evaporative Humidifiers
 Ultrasonic Fog Humidifiers

Duravent
Northern & Central Ohio

High Performance Chimneys & Vents

Goulds / G&L Commercial

 End Suction Pumps
 Vertical Multi-stage
 Pressure Booster Systems
 Vortex Waste Water

Griswold Controls

 Automatic Balance Valves
 Manual Balance Valves
 Pressure Independent Control
 Valves Coil Hook-up Kits

General Water Systems

 Chemical Free Water Treatment
 Centrifugal Separators

Hoffman Specialties

 Steam Traps & Specialties
 Condensate Return Pumps
 Pressure Regulating Valves

Kadant Johnson

Pressure Powered Pumps

McDonnell & Miller

 Boiler Safety Controls
 Level Controls
 Flow Switches

Metraflex Company

 Flexible Pump Connectors
 Expansion Joints & Guides
 Non-slam Check Valves
 Ball & Butterfly Valves

Miljoco

 Pressure Gauges
 Thermometers
 Accessories

Niles Steel Tank
Greater Toledo Area

Glass Lined & Steel Storage Tanks

NTI

 Residential/Commercial Condensing Boilers
 Residential/Commercial Condensing Water Heaters

Peterson Equipment Co.

Pressure / Temperature Test Plugs


ProPak Solutions

 Hot Water/Chilled Water Pump Skid Package
 Heat Transfer Skid Package
 Steam & Hydronic Boiler Skid Package
 Air Cooled Chiller Skid Package
 Water Heater Skid Package
 Snowmelt Skid Package
 Domestic Pressure Booster Package

PVI
Northern & Central Ohio

 Gas Fired Water Heaters
 Steam Fired Water Heaters
 Multiple Energy Water Heaters
 Oil & Oil/Gas Water Heaters
 Storage Tanks
 Water Quality
 Digital Mixing Valves

Rovanco

 Pre-insulated Pipe
 Containment Pipe

Tower Tech Cooling Towers

 High Efficiency Cooling Towers
 HVAC Cooling Towers
 Process Cooling Towers
 Power Generation Cooling Towers

Vertiflo

 Pedestal Mount – Sump Pumps
 Base Mounted Pumps
 Vertical Pumps

Webster Engineering
Greater Toledo Area

 Single & Dual Fuel Burners
 Landfill Gas Burners
 High Turndown Burners
 Temp-A-Trim: Air Density Control System

Wessels Company

 ASME & Glass Lined Storage Tanks Glycol Fill Systems
 Engineered Tanks

Replacing Your Water Heater Every Few Years is Not Our Business Plan



Conquest[®] condensing, gas-fired water heaters are constructed from AquaPLEX[®] duplex stainless steel so they're corrosion-resistant in potable water at any temperature. Available in 199-1000 MBH, Conquest provides even more BTUs in small spaces and fits through a standard 36-inch doorway. With a thermal efficiency of up to 96%, long product life and a 15-year tank and heat exchanger warranty, you can't afford not to have one.

Call R.L. Deppmann or visit our Monday Morning Minutes blog at deppmann.com for information on PVI Water Heaters

800.589.6120



800.784.8326 | pvi.com



Sump, sewage & grinder pumps, simplex & duplex pump systems, specialty pumps, battery back-up systems.
www.zoellerpumps.com



Commercial sewage pumps, non-clog pumps up to 60 hp, grinder pump systems, progressive cavity pumps.
www.zoellerengineered.com



Fiberglass & polyethylene basins, pre-fabricated lift stations.
www.toppindustries.com



SCHIER

Great Basin grease interceptors and sampling ports.
www.schierproducts.com



Oil separators, Solids interceptors, Chemical waste tanks.
www.striemco.com

V Systems & Controls, Inc.

Domestic water booster package systems for commercial, industrial & municipal applications.
www.vcsystems.net



Precision Plumbing Products

Trap Primers and Water Hammer Arrestors
Manufacturer
www.pppinc.net



Paired with Sloan High-Efficiency Flushometers, our Commercial Toilet and Urinal Systems take water efficiency to the next level.

All Sloan Flushometers are made from a high level of recycled material and are 100 percent recyclable.



Sloan Bio-Deck Sinks utilize natural materials such as corn cobs and other renewable domestic agricultural materials.

Dual-Flush Side Mount Retrofit is a fast, easy way to reduce water consumption.



Sloan Hands-Free Faucets promote cleanliness, hygiene and overall health benefits.



Monitoring Systems reduce operating costs and decrease water consumption.

Water Power

To arrange a personal consultation, call us at **800.982.5839**.

Every day around the world, Sloan advanced integrated water management systems provide elegant, efficient and hygienic washroom solutions for any commercial environment.

SLOAN

Water Connects Us™

The advertisement features a large, stylized 'M' on the left side, composed of two overlapping rectangular shapes in shades of blue and grey. To the right of the 'M' is a grid of four images: top-left shows a person in a white lab coat working with medical equipment; top-right shows a person in a white hard hat and safety vest working on a piece of equipment; bottom-left shows a city skyline at night; bottom-right shows a person in a white lab coat working with medical equipment. Below the grid is a dark blue banner with the text 'MULTIPLE LOCATIONS & ABUNDANT RESOURCES'. The 'MEDPIPE' logo is positioned to the left of this banner. The main headline is 'ALL OF YOUR MEDICAL GAS PRODUCTS & SERVICES UNDER ONE ROOF' in large, bold, white and yellow letters. Below the headline is the text 'Medical Gas System Equipment Sales, Inspection, Service & Repair' in white.

MEDPIPE

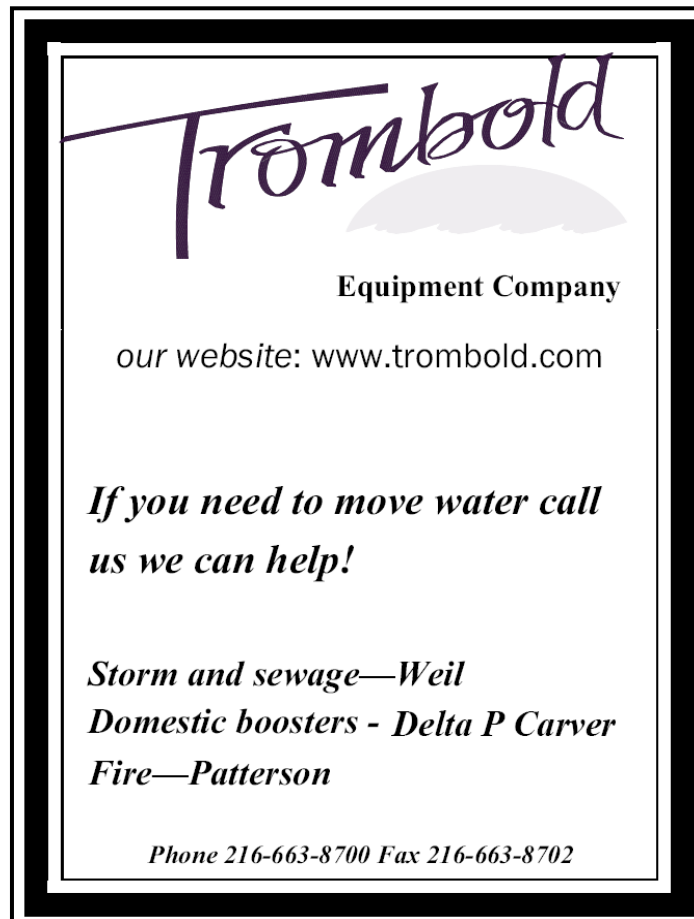
QUALITY PRODUCTS & SERVICES

PROFESSIONAL & EXPERIENCED STAFF

MULTIPLE LOCATIONS & ABUNDANT RESOURCES

ALL OF YOUR MEDICAL GAS PRODUCTS & SERVICES UNDER ONE ROOF

Medical Gas System Equipment Sales, Inspection, Service & Repair

The advertisement is enclosed in a double-line black border. At the top, the word 'Trombold' is written in a large, elegant, purple cursive font. Below it is a grey silhouette of a water droplet. Underneath the droplet, the words 'Equipment Company' are written in a bold, black, sans-serif font. The website address 'our website: www.trombold.com' is written in a smaller, black, sans-serif font. Below this is the text 'If you need to move water call us we can help!' in a bold, italicized, black, sans-serif font. At the bottom, there are three lines of text: 'Storm and sewage—Weil', 'Domestic boosters - Delta P Carver', and 'Fire—Patterson', all in a bold, italicized, black, sans-serif font. The phone and fax numbers 'Phone 216-663-8700 Fax 216-663-8702' are written in a smaller, black, sans-serif font at the very bottom.

Trombold

Equipment Company

our website: www.trombold.com

If you need to move water call us we can help!

Storm and sewage—Weil
Domestic boosters - Delta P Carver
Fire—Patterson

Phone 216-663-8700 Fax 216-663-8702

CURNAYN
SALES  INC.

PLUMBING HEATING SALES

Manufacturers Represented



Hubbell Prime Gas Water Heater

Represented By:
Omar McDowell Co.
 (440) 808-2280
craig@omarmcdowell.com

Hot Water Outlet

Removable Heat Exchanger

Allows for easy field servicing or replacement without removing the plumbing connections.

Stainless Steel Vessel Construction available for DI & RO water applications

Digital Controller
 120Volt 5AMP required

Advanced Blower

Advanced premix gas/air blower for increased combustion efficiency.

2" Polyurethane Foam Insulation

Exceeds the requirements of ANSI/ASHRAE standards for energy efficiency and heat loss by 10%.

1/2" Thick Hydrastone Lined Tank

A seamless cement lining is impervious to adverse water conditions and is proven to be the most effective method of preventing tank failure due to corrosion.

316L Stainless Steel Heat Exchanger

Resistant to corrosion for maximum reliability and longevity.

Features

40 - 119 Gallons Storage

55,000 BTU/HR

Vessel Warranty - 7 yrs nonprorated

Heat Xchanger - 5 yrs nonprorated

Other Heat Exchangers

VS. ...The Prime Advantage

Permanently welded to outer vessel

- ▶ Not removable
- ▶ Not serviceable
- ▶ Heat exchanger failure requires water heater replacement
- ▶ Not repairable
- ▶ Cleaning difficult, time consuming and costly
- ▶ Significant welded surface area increases the probability of failure

Modular Construction

- ▶ Fully removable heat exchanger
- ▶ Easily serviced in the field
- ▶ Heat exchanger can be replaced without water heater removal or replacement
- ▶ Repairable
- ▶ Cleaning is quick and easy
- ▶ Minimal welded area reduces the probability of failure

PRIME Heat Exchanger

Top view





NIBCO[®]
presssystem[®]

FIND YOUR FIT

**Choose from Over
600 Press Valve SKUs,
the Largest Offering
in the Industry**

- Options ranging from ½" – 4"
- Select from over 65 different valve configurations
- Our total system – valves, fittings and tools – comes with unparalleled service
- Experience the best customer service in the industry – as judged by our customers

**FIND YOUR FIT AT
NIBCO.COM/PRESS**

Amanda Miller | Area Sales Manager
614.634.2516 | millera2@nibco.com

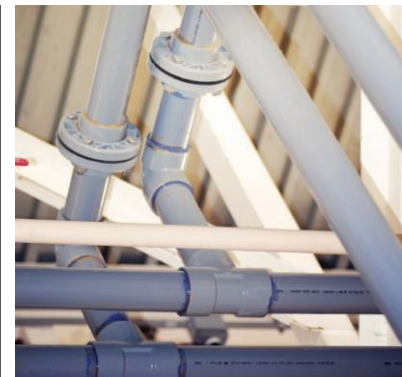
Paul Figuly | Assistant Regional Manager
216-402-7056 | figulyp@nibco.com

Aaron Kilburg | Commercial Sales Manager
331-262-0868 | kilburga@nibco.com

Spec with Confidence



PRECISELY ENGINEERED. REAL-WORLDTESTED.



Corzan® Material and Piping Solutions offer a complete tie-in to tap solution made up of Schedule 80 pipe & fittings, flanges, valves, and specialty adapter fittings including: MIP Threads x CPVC, FIP Threads x CPVC, Stub Out Elbows, and Male Sweat Adapters. Potable water systems designed with Corzan CPVC offer the best solution for reducing biofilm buildup and the growth of Legionella while being immune to degradation caused by standard disinfection procedures.

Performance Ratings

- Plenum rated for water distribution piping (ASTM E84-23)
- Conforms to NSF International Standards 61 and 14
- Withstands ANSI/ASHRAE Guideline 188 water treatment protocols
- Innately resistant to corrosion, pitting and scaling
- Resists biofilm that can lead to waterborne illness
- Pressure rated for temperatures up to 200°F

Diverse Applications

- Academic Buildings
- Multi-Family Housing
- Hotels
- Hospitals
- Data Centers
- Power Generation
- Wastewater Treatment Plants
- Chemical Processing Facilities





Premier manufacturer of plumbing valves including PRV's, control valves, backflow preventers, butterfly valves, hydronic heating valves, quick-connect fittings, water pex, drainage, & pure water filtration.



Products for the fire protection, irrigation, and waterworks markets. Backflow preventers, control valves, in-building risers, pre-assembled valve station products.



Manufacturers of stainless steel drainage systems. Product ranges from standardized products to customized drains.



Plumbing flange design & manufacturing, wholesale distribution and installation services to the plumbing and mechanical piping Industry.



The world's leading provider of power tools, hand tools, and jobsite equipment.



The world's leading provider of flexible stainless steel connectors for natural/LP gas and fluid conveyance applications.



Manufacturers of eyewash and drench shower systems for commercial, hospital, and industrial uses.



An industry leader in manufacturing backflow prevention assemblies.



Manufacturer of oil/water separator, wastewater treatment systems products.



Offers plumbing hangers, straps, fasteners and other solutions for installation of plumbing products and pipe.



Enclosures for backflow preventers for outdoor installations.

IntelliStation™:

The smarter way
to deliver tempered water



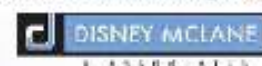
The Intelligent Water Mixing and Recirculation System

The IntelliStation™ provides unmatched levels of control over hot water delivery in commercial and institutional buildings.

- Precise digital control to $\pm 2^{\circ}\text{F}$
- Smart, easy-to-use controller with color touchscreen
- BAS integration
- Access to rich system data
- Integrated pump control for reliable, consistent temperatures
- Easy commissioning, repair, and management
- Sanitization mode allows for high temperature system purges
- Compliant with lead free legislation requirements

Learn about the smarter water mixing solution at
PowersControls.com/IntelliStation

POWERS™
A Watts Water Technologies Company



ESTABLISHED 1988



Utility control system to promote safety for the student as well as the instructor in the science laboratory learning environment.



Leading manufacturer of plumbing tools and equipment.



MAPA Products has been a driving force in the manufacturing of rooftop supports.



Mueller Steam Specialty is the world's largest supplier of strainers and the number one provider of specialty products serving the valve industry.



Worldwide leader of bottled and pressure water coolers, providing point-of-use filtration equipment, drinking fountains, dehumidifiers and water pitcher systems.



Acid waste & high purity pipe and fitting systems.



Manufacturers of thermostatic mixing valves for building, point-of-use and emergency equipment, tub/shower systems with pressure balancing, thermostatic, or combination shower controls.



Leader in complete control solutions for radiant floor and baseboard heating systems, multi-stage boiler plants, and automatic snow melting systems.



Since 1950, Wal-Rich has been servicing the Plumbing Wholesaler with the finest in plumbing, heating, industrial and hardware specialties.



Flexible corrugated piping systems for natural gas and propane, as well as iron fittings. Applications include single & multiple-family residential as well as industrial and commercial buildings.

UNEQUALED QUALITY.

WOODFORD ROOF HYDRANTS: RELIABLE ROOFTOP WATER.

- Heavy-duty cast iron mounting system can be installed by roofer; hydrant can be installed later.
- RHY2-MS freezeless hydrants automatically drain when shut off, even with hose attached.
- Easy to repair from top of unit without removing hydrant.
- Five-year limited warranty.

RHY2-MS
Woodford roof hydrant plumbs directly to drain

Woodford SRH
sanitary hydrant: no drain required!



WOODFORD MODEL 68 FREEZELESS UNDERCOVER WALL HYDRANT



- Model 68 freezeless wall hydrant protected by an integral locking cover
- Drains automatically—even with hose attached
- Replaceable locking stainless steel cover flips down for easy access
- Sleek, streamlined design
- Easier to install than recessed box hydrants



Service • Support • Supply

Manufacturer's Representatives

7860 North Central Drive Lewis Center, OH 43035
740-549-1516 740-548-0985 (Fax)

WOODFORD



**WOODFORD
MANUFACTURING COMPANY**
Excellence. *Always.*

800.621.6032 • www.woodfordmfg.com

Why Join ASPE

When you join ASPE, you become part of a worldwide family of engineering and design professionals and gain immediate access to their combined technical knowledge and industry support.

-  Professional Growth & Development
-  Networking
-  Industry Publications
-  Industry Events
-  Scholarship Program

Join ASPE Today

Get Involved

Chapters

ASPE has more than 7,400 members. Find your local ASPE Chapter.



AYP

Establish contacts and share experiences.



WOA

Engaging, retaining and advancing women in the industry.



RC FREY & ASSOCIATES
MANUFACTURERS' REPRESENTATIVE

REPRESENTING THE FINEST IN
COMMERCIAL PLUMBING FOR MORE
THAN 50 YEARS

330-425-2555 — WWW.RCFREY.COM

ZOELLER ENGINEERED PRODUCTS

INDUSTRIES TOPP INCORPORATED

SCHIER LIFETIME GUARANTEED GREASE INTERCEPTORS

PPP Precision Plumbing Products

STRIEM

V Systems

CLARUS ENVIRONMENTAL

VIEGA VALVES

**MORE SIZES.
MORE MATERIALS.**

The leader in pressing just got bigger. That means all Viega connections on your upcoming jobs. Who doesn't like the sound of that?

Dan Sabetta
Technical Manager – Great Lakes Region



**SCAN
WITH PHONE
TO CONTACT**



viega



THE MIFAB ADVANTAGE

IN STOCK AND READY TO SHIP!

 PINNACLE SALES
Phone: 800-253-7010
Email: sales@pinnaclereps.com
WWW.PINNACLEREPS.COM



QUICK HUB COUPLINGS:
NO NEED TO SEPARATE THE GASKET FROM THE SHIELD - INSTALLATION READY. JUST PUSH ON THE PIPE!



GRP TRENCH:
RIGID LIKE POLYMER CONCRETE BUT NOT FRAGILE. COMPETITORS MAXIMUM TEMPERATURE AT 140°F. OUR MAXIMUM TEMPERATURE AT 212°F!



TOP SET STRAINERS:
BRING THE STRAINER TO GRADE WITHOUT REMOVING THE GRATE AFTER THE CONCRETE POUR. JUST TURN THE THREE PHILLIPS HEAD SCREWS!



RPZ AND DC BACKFLOW:
ACCESS BOTH CHECKS FROM ONE ACCESS POINT. ALL STAINLESS STEEL BODY AND SHORTEST LAY LENGTH!



SIPHONIC DRAINAGE:
PIPES ARE FLUSHED AT HIGH VELOCITY AND SELF-CLEAN AS AIR EXITS THE SYSTEM. PIPE DIAMETER & MATERIALS ARE REDUCED BY HALF!



HDPE INTERCEPTORS:
LIFETIME WARRANTY. GENERIC CUT TO FIT ADS RISERS. PDI AND ASME APPROVED!

WWW.MIFAB.COM

ASPE **24** Chapter
Award of Merit
2023 – 2024 Recipient

** Local Chapters are not authorized to speak for the Society