

Cleveland Chapter of The American Society of Plumbing Engineers February 2025

CHAPTER OFFICERS

President

JOHN VARGA, P.E.
Scheesser Buckley Mayfield, Inc.
Email: jvarga@sbmce.com
(330) 526-2715

V.P. Technical

MARLON WRIGHT P.E., CPD
T/E/S Engineering
Email: mwright@tesengineering.com
(440) 871-2410

V.P. Legislative

CHRIS STACKHOUSE
Rep Source, LLC
Email: cstackhouse@repsourcellc.com
(614) 315-6606

V.P. Membership

FRANK MASTROIANNI JR.
Mastroianni & Associates, Inc.
Email: frankjr@mastroiannihvac.com
(440) 786-1100

Treasurer

KEVIN NOBLE, P.E., LEED AP
Scheesser Buckley Mayfield, Inc.
Email: knoble@sbmce.com
(330) 526-2714

Administrative Secretary

DAN EVANS, P.E., CPD, GPD
HEI Engineering Group, Inc.
Email: evans@hei-engineering.com
(330) 262-0042

Corresponding Secretary

KIM METZGER
Edelman Supply
Email: kimberly@edelmanplumbing.com
(216) 333-8475

Affiliate Liaison

KATHY KIRSCHNICK
Johnson Controls
Email: kkirschnick123@gmail.com
(216) 904-6656

AYP Group Liaison

NICO ROMERO, EIT, CPDT
T/E/S Engineering
Email: romero@tesengineering.com
(440) 614-0324

WOA Group Liaison

KATHY KIRSCHNICK
Johnson Controls
Email: kkirschnick123@gmail.com
(216) 904-6656

Chapter Ambassador

KEITH BUSH FASPE, CPD, GPD, CSI
Email: kbush@wright-engineering.com
(330) 815-9368

Newsletter Editor

MICHAEL DRAB
Thorson Baker & Associates, Inc.
Email: mdrab@thorsonbaker.com
(330) 659-6688

From the President:



I would like to thank Chris Stackhouse with Rep Source for being our guest speaker at the January Technical Meeting.

The February Technical Session will be on the topic; New Innovations in Medical Gas Piping, presented by Rob Miller with Omega Flex.

February 12, 2025, Lunch Meeting will be held at Slyman's Tavern Independence located at 6901 Rockside Road, Independence, Ohio 44131.

11:30 – 11:50 Chapter Board Meeting
11:50 – 12:00 Sign-In / Meet and Greet
12:00 – 1:00 Presentation During Lunch

ASPE Cleveland is going CASHLESS! Lunch price is \$20. Your electronic payment will confirm your RSVP! No walk-ins will be permitted. Please RSVP by Noon on February 10, 2025, with Kevin Noble at knoble@sbmce.com. Kevin will send you the link for the payment. Please support your local chapter by attending.

Let us know if there are any specific topics you would like to see our chapter sponsor. We are always looking for new ideas. Remember, without membership and participation there is no local chapter.

John A. Varga, P.E.
President, ASPE Cleveland Chapter



Join us in Orlando!

**2024 - 2025 ASPE Meeting/Plumbing Class Schedule
February 2025**

<u>Date – Time – Place</u>	<u>Topic</u>	<u>Speaker(s)</u>	<u>Exhibitors</u>
September 18, 2024 – 6:00 PM Cleveland Yachting Club	Clam Bake Topic – Social Event ASPE Cleveland Chapter	N/A	N/A
October 9, 2024 – 6:00 PM Harry's Steakhouse Cost: FREE	Specifying Emergency Fixtures	Jonny Pingry - Guardian	Midwest Spec
November 13, 2024 – 6:00 PM KD Party Center 6085 State Rd. Parma, OH 44130 Cost: \$20	Pre-action Fire Protection Systems	Sam Schwander Reliable Automatic Sprinkler Co., Inc.	Reliable Automatic Sprinkler Co., Inc.
December 11, 2024 – 12:00PM North Royalton Public Library 5071 Wallings Road, North Royalton Cost: FREE	Drinking Water Filtration Legislation	Zach Dufala – ZURN / Elkay	BWA South
January 8, 2025 – 6:00 PM Slyman's Tavern Independence Cost: \$20	Engineered Infection Prevention	Tim Dallas - Franke	Rep Source, LLC
February 12, 2025 Slyman's Tavern Independence Cost: \$20	New Innovations in Medical Gas Piping	Rob Miller – Omega Flex	Omega Flex, Inc.
March 12, 2025 – 6:00PM Location TBD Cost: TBD	Ohio Updates to NFPA 99	Josh Pedraja	Josh Pedraja
April 9, 2025 – 12:00 PM R.L. Deppmann Cost: FREE	TBD	R.L. Deppmann	R.L. Deppmann
May 14, 2025 Time and Location TBD Cost: TBD	PVDF Piping Overview and Applications Chapter Board Elections	Marco Deangelo - Arkema	Arkemo

**2024 - 2025 ASPE Meeting/Plumbing Class Schedule
February 2025**

The above is the meeting/plumbing class schedule for the 2024-2025 ASPE year. Updated information will appear in subsequent newsletter issues. All meetings will be at Harry's Steakhouse, 5664 Old Brecksville Road, Independence unless otherwise indicated. The meeting/plumbing class, including dinner, is \$20.00 Unless noted otherwise. Reservations are required. A mini product show will be held before each meeting/plumbing class highlighting some of the materials discussed in class or products that will assist the engineer in understanding what they are designing or specifying. All plumbing classes will qualify for 0.1CEU hours and will assist in preparation for the ASPE CPD examination.

The following times will be enforced as strictly as possible.
Make your reservations a minimum of two days before the meeting/class and try to be on time.


Evening Seminars:

- Chapter Board Meeting 5:00 - 5:30 pm
- Sign-in / Meet and Greet / Vendor Product Displays 5:00 - 6:00 pm
- Dinner 6:00 - 6:30 pm
- Presentation 6:30 - 6:45 pm
- Vendor Product Displays 6:45 - 7:45 pm

Lunchtime Seminars:


- Mini Product Show 11:30 - 11:45 am
- Sign-In / Meet and Greet / Vendor Product Displays 11:45 - 12:00 pm
- Lunch 12:00 - 12:30 pm (Seminar to begin during lunch)
- Presentation 12:00 - 1:00pm

PROUDLY PROVIDING THERMOSTATIC BALANCING SOLUTIONS FOR OVER 10 YEARS

Hot Water Recirculation 



In 2012, CircuitSolver® was developed to conquer the challenges inherent to conventional manual balancing valves. As the market's first **thermostatic balancing valves** used for domestic hot water recirculation, CircuitSolver® balances a system based solely on temperature as opposed to pressure or flow to guarantee hot water at **every fixture**. Dynamically balancing a system, CircuitSolver® ultimately **ended complaints** about the lack of hot water, and eliminated balancing processes and callbacks.

Cold Water Recirculation 



Last year, we implemented our thermal actuator technology into the CircuitSolver® Union Cold Water balancing valves. These valves are installed in domestic Cold Water recirculation systems to mitigate the risk of Legionella and other bacterial growth. Cold water recirculation is becoming more prominent in hospitals to reduce water stagnation and ensure residual chlorine is distributed but can be beneficial to any commercial building that could experience periods of low flow or non-use.



www.pinnacle reps.com



(800) 253-7010



T&S has your **plumbing** solutions.

Discover the lasting reliability of T&S. From hose reels to sensor faucets, lab equipment to high-end fixtures, T&S offers all the plumbing products you need, with reliability built in. Contact your representative today to learn how T&S can outfit any facility, or visit tsbrass.com.



T&S plumbing products represented in Cleveland by: Midwest Spec., LLC • 513-353-9191



CONTACT INFORMATION:

StreamKey
Mike Felton, CEO
513-792-1221
mike@streamkey.com

January 1, 2025

StreamKey and RC Frey & Associates Join Forces to Enhance Service Area.

RC Frey & Associates will soon be part of StreamKey. This merger represents the joining of two organizations that share similar values and a strong vision for our future as one organization. RC Frey & Associates in Cleveland, Ohio has operated for over 60 years and their expertise includes plumbing equipment design and sizing solutions, tailored to their clients' needs.

The merger provides an exciting opportunity to enhance the shared business service footprint to now include all of Ohio, Kentucky and Indiana. Mike Felton, CEO of StreamKey believes customers and partners can expect to experience enhanced services. Felton says, "By combining our teams, we are able to offer even greater expertise, innovation, and the same high-level sales and support you have come to expect from both agencies."

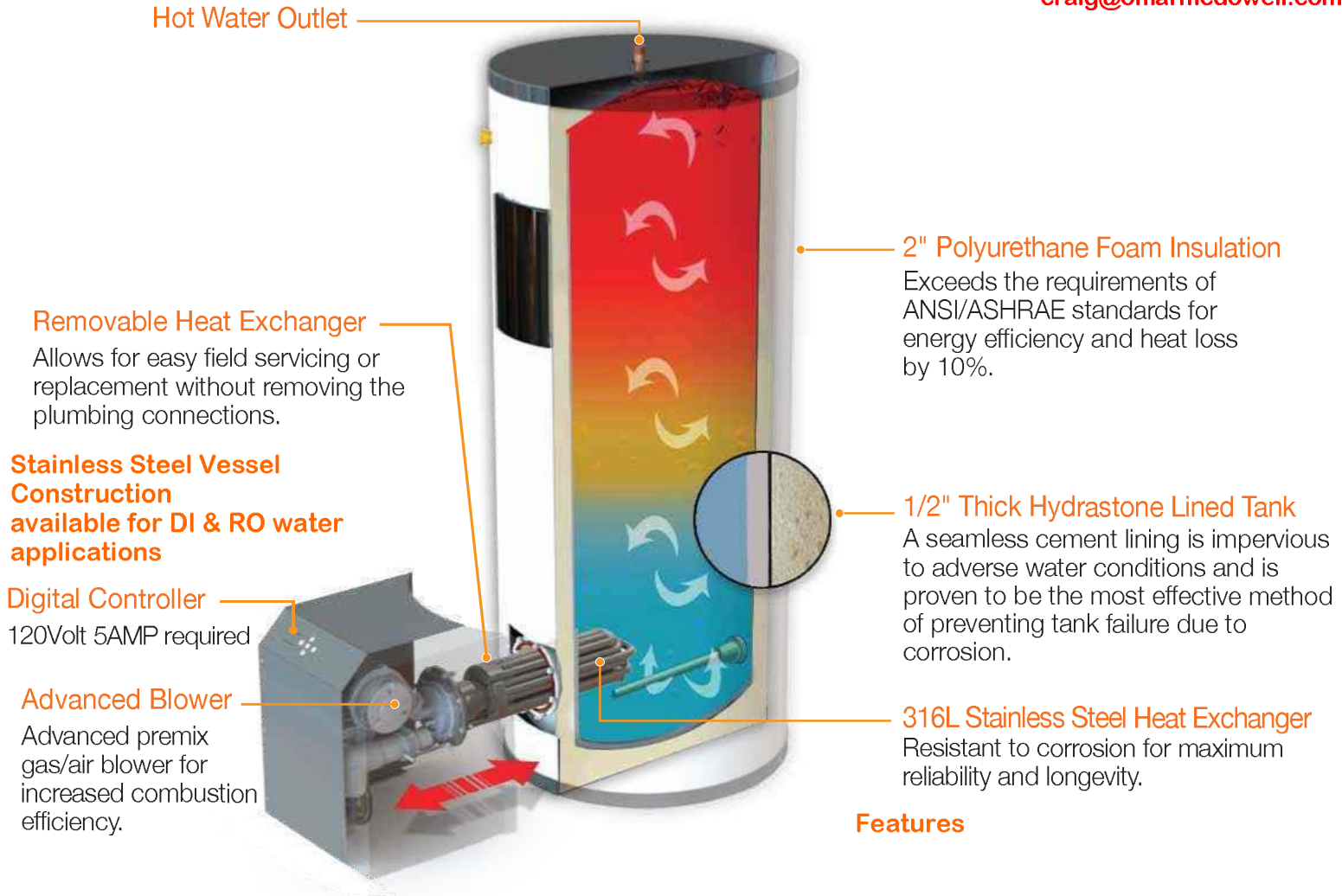
A robust leadership Team has been formed; Mike Felton will be assuming the role of CEO of the new organization. Joining him as partners are Chris Nightwine, Ryan Cable, Brian Selander, and Kyle Devlin. Together, they bring broad expertise and enthusiastic commitment to ensure our continued mutual success for our partners and StreamKey.

Chris Nightwine, incoming President of StreamKey stated, "We anticipate a smooth transition and your day-to-day interactions with our team will remain unchanged. We are committed to strengthening our presence with our customer base while remaining one of your most valuable rep agencies."

StreamKey, launched in 1993 by Felton, provides custom engineered water and wastewater systems for commercial and residential applications in partnership with the highest quality manufacturers. The team of engineers, sales professionals, field technicians, and customer support personnel cover the states of Ohio, Kentucky and Indiana.

Hubbell Prime Gas Water Heater

Represented By:
Omar McDowell Co.
 (440) 808-2280
craig@omarmcdowell.com



Features

Other Heat Exchangers

VS. ...The Prime Advantage

Permanently welded to outer vessel

- ▶ Not removable
- ▶ Not serviceable
- ▶ Heat exchanger failure requires water heater replacement
- ▶ Not repairable
- ▶ Cleaning difficult, time consuming and costly
- ▶ Significant welded surface area increases the probability of failure

Modular Construction

- ▶ Fully removable heat exchanger
- ▶ Easily serviced in the field
- ▶ Heat exchanger can be replaced without water heater removal or replacement
- ▶ Repairable
- ▶ Cleaning is quick and easy
- ▶ Minimal welded area reduces the probability of failure

Approved
 Approved

PRIME Heat Exchanger

Top view





NIBCO[®]
presssystem[®]

FIND YOUR FIT

**Choose from Over
600 Press Valve SKUs,
the Largest Offering
in the Industry**

- Options ranging from ½" – 4"
- Select from over 65 different valve configurations
- Our total system – valves, fittings and tools – comes with unparalleled service
- Experience the best customer service in the industry – as judged by our customers

**FIND YOUR FIT AT
NIBCO.COM/PRESS**

Amanda Miller | Area Sales Manager
614.634.2516 | millera2@nibco.com

Paul Figuly | Assistant Regional Manager
216-402-7056 | figuly@nibco.com

Aaron Kilburg | Commercial Sales Manager
331-262-0868 | kilburga@nibco.com

CURNAYN
SALES  INC.

PLUMBING HEATING SALES

Manufacturers Represented

AMERICH®

ARC

AKW

BEMIS

GERBER

Take Control.
ion Technologies
A division of Metropolitan Industries, Inc.

NAVIEN

THERMASSOL
Steam & Showering Systems

Fipi USA

viega

ZILMET
globally renowned

Advance Thermal Corp.

Removable Insulation & Acoustic Covers

Aerco

Commercial Condensing Boilers
Commercial Condensing Water Heaters
Indirect & Semi-instantaneous Heaters

Bell & Gossett

Balance Valves

Automatic Flow Limiting
Manual Flow Limiting
Pressure Independent Control

Hydronic Specialties
Expansion/Compression Tanks
Centrifugal Pumps

Base Mounted
Close Coupled
Double Suction
Horizontal Split Case
In-Line
Multi-Stage

Heat Exchangers

Shell & Tube
Plate Heat Exchangers
Replacement Tube Bundles

Heat Transfer Packages
Pressure Booster Systems
Submersible Pumps
Variable Speed Systems
Vertical Turbine Pumps

Bobco

Differential Gauge Kits

Bock Water Heater

Gas Fired Water Heater
Electric Water Heater
Oil Water Heater
Indirect Water Heater
Solar / Geo Thermal Water Heater
Electric Point of Use Water Heater

BoilerMag

Magnetic Filters
Basic System Chemical Solutions



Cemline Corp.

ASME Tanks
Boiler Blowdown Separators
Condensate Coolers
Hot Water Storage Heaters
Packaged Water Heaters
Replacement Tube Bundles Stone
Steel Lined Tanks
Unfired Steam Generators

Danfoss

Greater Toledo Area
Variable Frequency Drives Motor
Soft Starters

Domestic Pump

Boiler Feed Systems
Condensate Return Pumps
Pressure Powered Pumps
Vacuum Pumps

Dow Heat Transfer Fluids

DOWTHERM™ SR-1 Ethylene Glycol
DOWFROST™ HD Propylene Glycol

Dri-Steam

Greater Toledo Area

Steam Injection Humidifiers
Gas To Steam Humidifiers
Steam To Steam Humidifiers
Electric Steam Humidifiers
Evaporative Humidifiers
Ultrasonic Fog Humidifiers

Duravent

Northern & Central Ohio
High Performance Chimneys & Vents

Goulds / G&L Commercial

End Suction Pumps
Vertical Multi-stage
Pressure Booster Systems
Vortex Waste Water

Griswold Controls

Automatic Balance Valves
Manual Balance Valves
Pressure Independent Control
Valves Coil Hook-up Kits

General Water Systems

Chemical Free Water Treatment
Centrifugal Separators

Hoffman Specialties

Steam Traps & Specialties
Condensate Return Pumps
Pressure Regulating Valves

Kadant Johnson

Pressure Powered Pumps

McDonnell & Miller

Boiler Safety Controls
Level Controls
Flow Switches

Metraflex Company

Flexible Pump Connectors
Expansion Joints & Guides
Non-slam Check Valves
Ball & Butterfly Valves

Miljoco

Pressure Gauges
Thermometers
Accessories

Niles Steel Tank

Greater Toledo Area
Glass Lined & Steel Storage Tanks

NTI

Residential/Commercial Condensing Boilers
Residential/Commercial Condensing Water Heaters

Peterson Equipment Co.

Pressure / Temperature Test Plugs



ProPak Solutions

Hot Water/Chilled Water Pump Skid Package
Heat Transfer Skid Package
Steam & Hydronic Boiler Skid Package
Air Cooled Chiller Skid Package
Water Heater Skid Package
Snowmelt Skid Package
Domestic Pressure Booster Package



PVI

Northern & Central Ohio
Gas Fired Water Heaters
Steam Fired Water Heaters
Multiple Energy Water Heaters
Oil & Oil/Gas Water Heaters
Storage Tanks
Water Quality
Digital Mixing Valves

Rovanco

Pre-insulated Pipe
Containment Pipe

Tower Tech Cooling Towers

High Efficiency Cooling Towers
HVAC Cooling Towers
Process Cooling Towers
Power Generation Cooling Towers

Vertiflo

Pedestal Mount – Sump Pumps
Base Mounted Pumps
Vertical Pumps

Webster Engineering

Greater Toledo Area
Single & Dual Fuel Burners
Landfill Gas Burners
High Turndown Burners
Temp-A-Trim: Air Density Control System

Wessels Company

ASME & Glass Lined Storage Tanks
Glycol Fill Systems
Engineered Tanks

Replacing Your Water Heater Every Few Years is Not Our Business Plan



Conquest[®] condensing, gas-fired water heaters are constructed from AquaPLEX[®] duplex stainless steel so they're corrosion-resistant in potable water at any temperature. Available in 199-1000 MBH, Conquest provides even more BTUs in small spaces and fits through a standard 36-inch doorway. With a thermal efficiency of up to 96%, long product life and a 15-year tank and heat exchanger warranty, you can't afford not to have one.

Call R.L. Deppmann or visit our Monday Morning Minutes blog at deppmann.com for information on PVI Water Heaters

800.589.6120



800.784.8326 | pvi.com

MASTROIANNI & ASSOCIATES, INC.

Manufacturers' Representative of Products for the Mechanical Trades Since 1984

HOT WATER PRIMETER HEATING, STEAM, ELECTRIC RADIATORS, TOWEL WARMERS

RUNTAL RADIATORS www.runtalnorthamerica.com

LINK SEALS, PIPE SLEEVES, CASING SPACERS, END SEALS

LINK SEAL , GARLOCK , PSI, THUNDERLINE, GPT www.linkseal.com

BARCO BALL JOINTS, PACKED SLIP JOINTS, BELLOWS EXPANSION JOINTS, VENTURI FLOW METERS, SEISMIC 'V'-LOOPS

HYSpan PRECISION PRODUCTS www.hyspan.com

HEAT EXCHANGERS (SHELL & TUBE), AIR & DIRT SEPARATORS, HYDRAULIC SEPARATORS, AUTOMATIC AIR VENTS, PUMPS, SUCTION DIFFUSERS, TRIPLE DUTY VALVES

THRUSH CO www.thrushco.com

DOMESTIC WATER BOOSTER SYSTEMS, SKID MOUNTED HVAC PACKAGES

TIGERFLOW SYSTEMS www.tigerflow.com

HYDRONIC BALANCING VALVES (AUTOMATIC & MANUAL), "COIL PAKS", HOSE PAKS, BYPASS KITS

NEXUS VALVE www.nexusvalve.com

HUMIDIFIERS (STEAM, ELECTRIC, GAS, DISPERSION MANIFOLDS)

PURE HUMIDIFIER www.purehumidifer.com

EXPANSION TANKS, BUFFER TANKS, AIR SEPARATORS, GLYCOL MAKE-UP SYSTEM

JOHN WOOD CO www.johnwood.com

SUMP PUMPS & OIL MINDER / DETECTION SYSTEMS CONDENSATE / BOILER FEED / VACUUM PUMP PACKAGES

STANCOR PUMPS..... www.stancorpumps.com

FEDERAL PUMPS CO..... www.federalpumps.com

PLATE & FRAME HEAT EXCHANGERS

POLARIS www.polarisphe.com

PUMPS: END SUCTION, IN-LINE, RECIRCULATION

THRUSH PUMP..... www.thrushco.com

CHECK VALVES, STRAINERS, BUTTERFLY VALVES

TITAN / MJELLER..... www.titanfci.com

BONOMI www.bonominorthamerica.com

FLEX CONNECTORS, EXPANSION JOINTS, NESTED LOOPS, PIPE GUIDES

ENGINEERED FLEXIBLE PRODUCTS..... www.general-rubber.com

GENERAL RUBBER CO..... www.engineeredflex.com

VIBRATION ISOLATION - SPRING HANGERS, VIBRATION CURB BASES, INERTIA BASES

VIBRATION ELIMINATOR CO www.veco-ny.com

PRE-INSULATED PIPE SHIELDS

VALUE ENGINEERED PRODUCTS www.valueng.com

THERMOMETERS, PRESSURE GAUGES, P/T PLUGS, GAUGE ACCESSORIES

WEKSLER GLASS THERMOMETER CORP..... www.wekslerglass.com

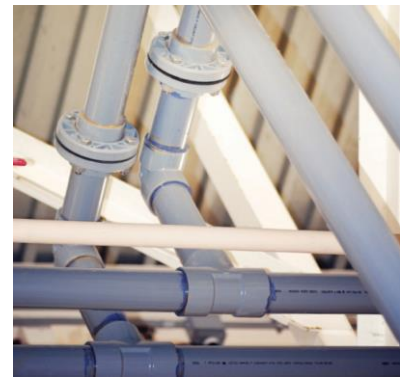
7601 First Place Drive ~ Ste A- 13 ~ Phone: 440.786.1100 ~ Fax: 440.786.1103

www.mastroiannihvac.com

Spec with Confidence



PRECISELY ENGINEERED. REAL-WORLDTESTED.



Corzan® Material and Piping Solutions offer a complete tie-in to tap solution made up of Schedule 80 pipe & fittings, flanges, valves, and specialty adapter fittings including: MIP Threads x CPVC, FIP Threads x CPVC, Stub Out Elbows, and Male Sweat Adapters. Potable water systems designed with Corzan CPVC offer the best solution for reducing biofilm buildup and the growth of Legionella while being immune to degradation caused by standard disinfection procedures.

Performance Ratings

- Plenum rated for water distribution piping (ASTM E84-23)
- Conforms to NSF International Standards 61 and 14
- Withstands ANSI/ASHRAE Guideline 188 water treatment protocols
- Innately resistant to corrosion, pitting and scaling
- Resists biofilm that can lead to waterborne illness
- Pressure rated for temperatures up to 200°F

Diverse Applications

- Academic Buildings
- Multi-Family Housing
- Hotels
- Hospitals
- Data Centers
- Power Generation
- Wastewater Treatment Plants
- Chemical Processing Facilities





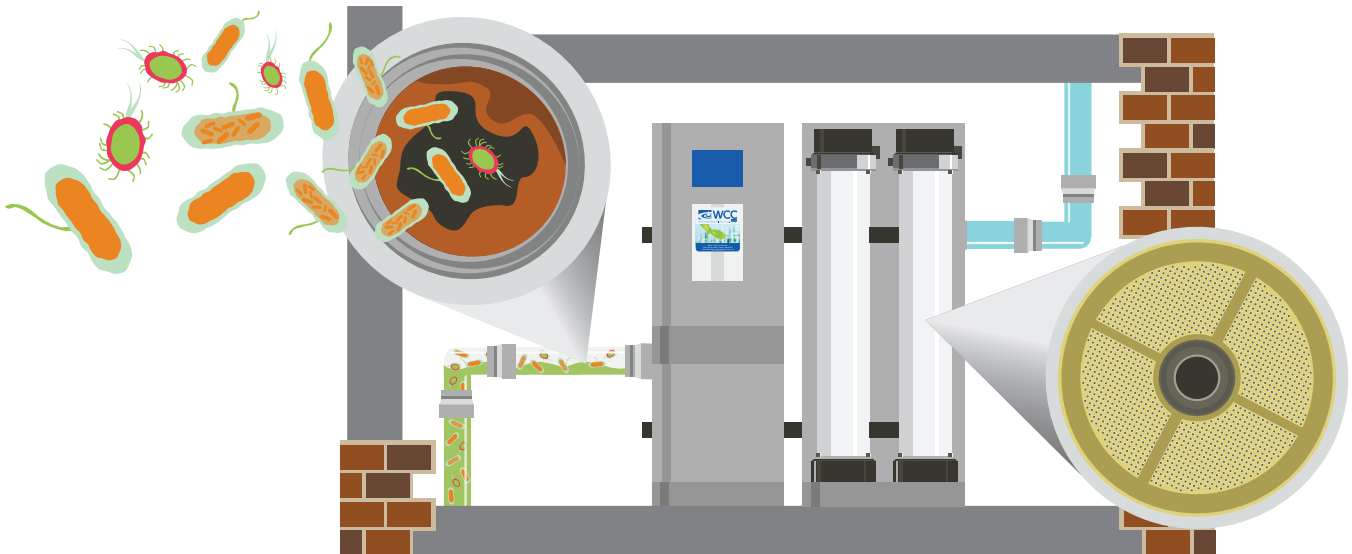
107 Cypress Street S.W. Reynoldsburg, OH 43068
 Phone: 740-927-6880 Fax: 740-927-4545
www.RepSourceLLC.com

Manufacturers Representatives Serving Plumbing, Mechanical, Electrical, Architectural and Water Treatment Industries. Representing the following product lines:

A Better Idea/Quick Block/EZ Sleeper	<i>E-Z Sleeper / Quick Block / Pipe Ease</i> – Rooftop pipe and equipment support blocks and deck flanges.
AB&I Foundry	No-Hub and Hub and Spigot Cast Iron Soil Pipe and Fittings
Anaco-Husky	American made complete line of heavy-duty <i>Husky</i> high performance and standard no-hub couplings, <i>Cremco</i> specialty transitional couplings and service weight gaskets.
Apollo Valves Backflow	<i>Apollo Valves</i> backflow prevention products for plumbing, fire protection, waterworks and irrigation markets.
Atlas Filtri	Water filtration solutions including: Filter Housings, Cartridges, Whole House and Tankless Water Heater Complete Kits, Hydra Self-Cleaning, Reverse Osmosis and <i>ScaleArmor</i> Polyphosphate.
Bradley	<i>Washbar</i> all in one hand washing stations, washfountains, <i>Express</i> and <i>Frequency</i> lavatory systems, <i>Navigator</i> thermostatic mixing valves, showers, safety equipment, metering faucets, patient care, <i>Terreon</i> solid surface products, <i>Evero</i> natural quartz products, <i>Keltech</i> safety/skid water heaters.
Creative Industries	Pre-cast terrazzo shower floors, mop basins, concrete laundry tubs and stairs or benches, terrazzo or concrete or glass counter tops and custom terrazzo products.
Elkhart Products	<i>Elkhart Products</i> wrought copper tube fittings, cast fittings and EPC engineered push-fit fitting brands include <i>TECTITE</i> and <i>CopperLOC</i> .
Franke www.franke.com/us/en/home-solutions.html	Commercial, Institutional, Healthcare, Scullery, Utility, Vanity and Handwash stainless steel sinks, faucets and accessories. Residential and Luxury <i>Mythos</i> and <i>Maris</i> stainless steel, granite, fireclay, work center and farmhouse kitchen sinks, faucets and specialty products.
Hydrotek	Sensor operated flush valves and faucets available in both battery and AC models.
Kemper Water Control	Engineered <i>Flow Splitter</i> and <i>Balancing Valve</i> system technology for domestic water and Legionella mitigation solutions.
Liberty Pumps	Sump, drain and condensate, utility, transfer, effluent and sewage pumps, <i>Omnivore</i> and <i>ProVore</i> grinders, <i>Accent II</i> macerating toilet system and engineered pump system packages.
Marlo	Commercial & industrial water softeners, media filters, reverse osmosis, dealkalizers, deionized and EDI electro-deionized water treatment equipment.
Mountain Plumbing Products	High performance Water Appliances “Made Better by Design” including plumbing accessories, water filters, waste disposers, instant hot water tanks, and water chillers.
Plumberex	<i>Pro-Extreme</i> , <i>Trap Gear</i> , <i>Handy Shield Maxx</i> and <i>Clear Shield</i> lavatory trap and riser insulation kits. <i>Mushroom Flange</i> and <i>Floor Sink Carrier</i> specialty products.
Raychem / nVent Thermal Solutions	<i>HWAT</i> self-regulating heating cable system for domestic hot water, <i>XL-Trace</i> , <i>Gardian</i> and <i>WinterGard</i> freeze protection cable, <i>Pyrotex MI</i> and <i>Electromelt</i> snow and anti-icing cable, <i>IceStop</i> , <i>RIM</i> and <i>FrostGuard</i> roof and gutter de-icing cable, <i>RaySol</i> , <i>NuHeat</i> floor warming and freezer frost heave cable.
Schott Scientific Glass / Kimax	Glass piping for acid waste and containment piping systems. <i>Knight-Ware</i> acid neutralizing sumps.
Stiebel Eltron	Electric tankless/instantaneous/mini tank water heaters for commercial, residential and industrial applications, emergency shower eyewash heaters, <i>Accelera</i> E heat pump water heaters, hot water tanks for solar, geothermal, and hydronic, instant hot water dispensers, electric fan heaters and hand dryers.
Tight Seal Gasket	Toilet & urinal setting with Innovative, flexible design, sticky, reusable, elastomer toilet & urinal gaskets. Compresses up to 50%. Will not break or become brittle. Allows movement without leaking.
TOTO USA	Global Manufacturer of Residential and Commercial Plumbing Fixtures, vitreous china, <i>Washlet</i> toilet seats, <i>NeoRest</i> toilets and Accessories.
Triangle Tube	Commercial and Residential condensing combi and solo, wall mounted and floor mounted boilers, direct fired water heaters, indirect fired water heaters and heat exchangers.
Water Control Corporation	High-Capacity Ultra-Filtration for Legionella & Pathogen control, rainwater reclamation systems with ultraviolet or ozone purification, high purity water systems, water softeners, water filters.
Waterless Company	<i>Waterless</i> “No Flush” vitreous china and fiberglass urinals with <i>EcoTrap</i> and <i>Blue Seal</i> liquid, <i>UTC Sentinel</i> sensor flushing systems. <i>Everprime</i> floor drain traps primer liquid. <i>Greenclean</i> chemicals.
Xerxes	Fiberglass Water and Wastewater storage solutions. Water storage, grease, oil, solids interceptors, and double wall decontamination tanks.
Additional Products Distributed:	Bathroom Partitions (solid plastic, baked enamel, stainless steel, laminate and phenolic), Bathroom Accessories, Lockers (solid plastic and metal), Water treatment products.

LEGIONELLA:

Don't Manage the Symptoms. Control the Cause!



We remove Legionella & pathogens *before* they enter your plumbing and mechanical system.

HIGH-CAPACITY ULTRAFILTRATION

Point-of-Entry • Point-of-Use • Hot Water Recirc Treatment



Where NATURE & SCIENCE meet.™ 

- 99.999% removal of Legionella and pathogens (3rd party-verified)
- A firewall for the entire building
- Drastic reductions in nutrients and biofilms
- 500 GPM+, minimal pressure loss
- Self-cleaning, long-lasting, low maintenance
- Automatic membrane integrity verification (Meets strict EPA guidelines)




seccua®
German Hollow-Fiber
Membrane Technology



PROTECT YOUR FACILITY AND LEARN MORE AT WATERCONTROLINC.COM



Paired with Sloan High-Efficiency Flushometers, our Commercial Toilet and Urinal Systems take water efficiency to the next level.

All Sloan Flushometers are made from a high level of recycled material and are 100 percent recyclable.



Sloan Bio-Deck Sinks utilize natural materials such as corn cobs and other renewable domestic agricultural materials.

Dual-Flush Side Mount Retrofit is a fast, easy way to reduce water consumption.



Sloan Hands-Free Faucets promote cleanliness, hygiene and overall health benefits.



Monitoring Systems reduce operating costs and decrease water consumption.

Water Power

To arrange a personal consultation, call us at **800.982.5839**.

Every day around the world, Sloan advanced integrated water management systems provide elegant, efficient and hygienic washroom solutions for any commercial environment.

SLOAN

Water Connects Us™



Midwest Spec.







ENCLOSURES DESIGNED FOR THE WORLD'S WATER SYSTEMS™



Advanced Thermal Technologies











(440)-944-7500 

clesales@mwspec.com 

29315 Clayton Ave.
Wickliffe, Ohio 44092 

www.mwspec.com 



INDIANAPOLIS OFFICE 8540 E. 33RD ST. INDIANAPOLIS, IN 46226 PHONE: (463) 777-8169 FAX: (317) 292-0749 INORDERS@BWASOUTH.COM INQUOTES@BWASOUTH.COM WWW.BWASOUTH.COM	COLUMBUS OFFICE 4501 SUTPHEN CT HILLIARD, OH 43026 PHONE: (614) 876-2477 FAX: (614) 876-0029 ORDERS@BWASOUTH.COM QUOTES@BWASOUTH.COM WWW.BWASOUTH.COM	CINCINNATI OFFICE 10869 READING RD CINCINNATI, OH 45241 PHONE: (513) 733-4771 FAX: (513) 733-6867 ORDERS@BWASOUTH.COM QUOTES@BWASOUTH.COM WWW.BWASOUTH.COM	CLEVELAND OFFICE 6111 CAREY DR UNIT 2 & 3 VALLEY VIEW, OH 44125 PHONE: (330) 655-9220 FAX: (330) 655-9222 NOHORDERS@BWASOUTH.COM QUOTES@BWASOUTH.COM WWW.BWASOUTH.COM
--	---	--	--

MANUFACTURERS' REPRESENTATIVES OF THE HIGHEST QUALITY PLUMBING AND SPECIALTY BUILDING PRODUCTS








































ASPE MedGas Basics

ASPE Launches a New Educational Offering: MedGas Basics Classes

education.aspe.org



MedGas Workshop

American Society of Plumbing Engineers

March 20-23, 2025
Rosemont (Chicago), IL

Registration Is Open for ASPE's March 2025 MedGas Workshop

VIEGA VALVES

**MORE SIZES.
MORE MATERIALS.**

The leader in pressing just got bigger. That means all Viega connections on your upcoming jobs. Who doesn't like the sound of that?

Dan Sabetta
Technical Manager – Great Lakes Region



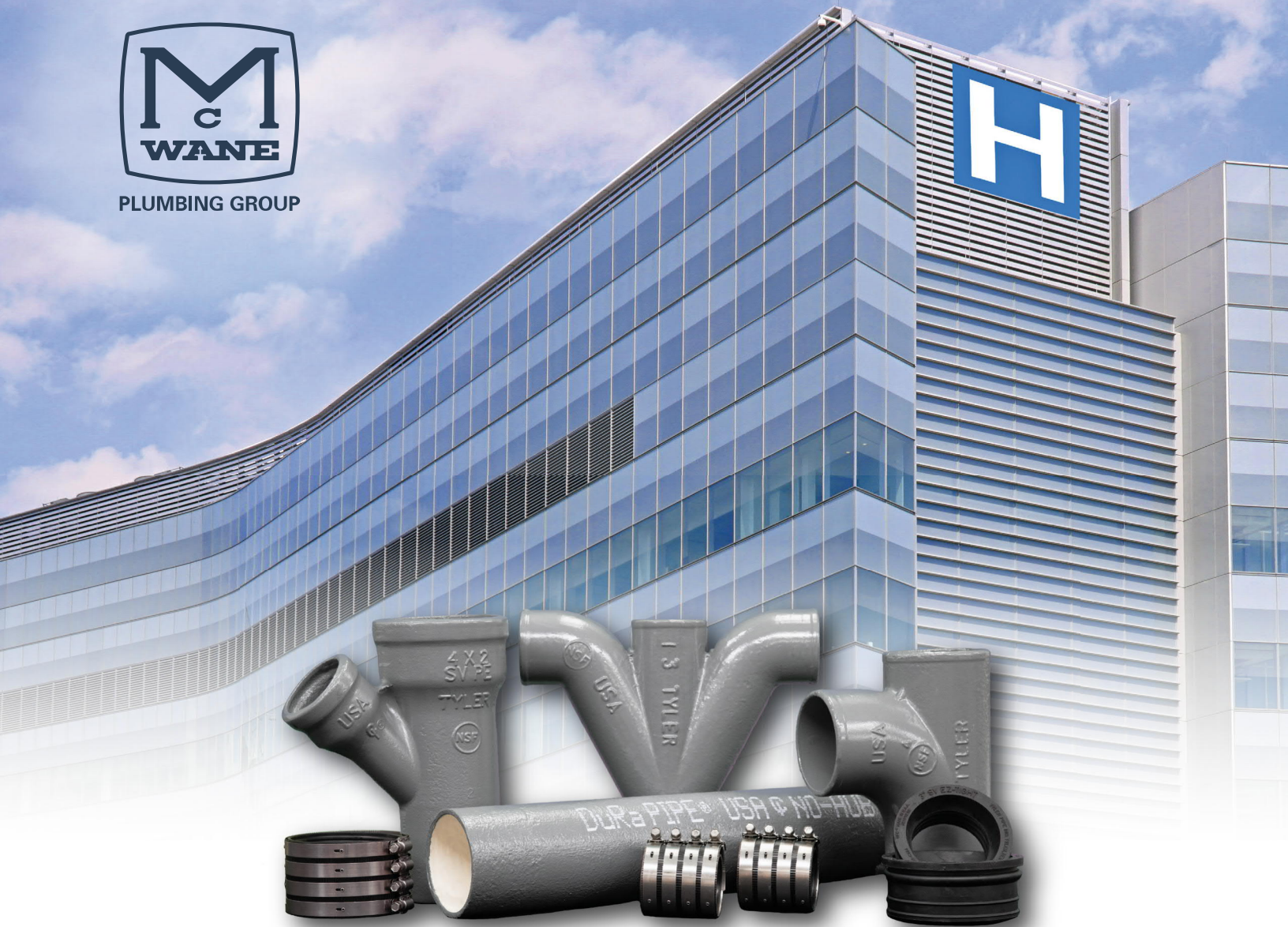
**SCAN
WITH PHONE
TO CONTACT**



viega



PLUMBING GROUP



Superior Performance & System Reliability

DuRa Pipe™ enhanced epoxy coating applied to cast iron soil pipe and fittings. It is well suited for aggressive DWV applications where greater performance is required.



ABIFoundry.com



Anaco-Husky.com



PIPE & COUPLING

TylerPipe.com

Trombold

Equipment Company

our website: www.trombold.com

*If you need to move water call
us we can help!*

*Storm and sewage—Weil
Domestic boosters - Delta P Carver
Fire—Patterson*

Phone 216-663-8700 Fax 216-663-8702

CHARLOTTE
PIPE AND FOUNDRY COMPANY

**NOW OFFERING
EDGE HP IRON,TM**

visit www.charlottepipe.com

C. TODD GREEN
Field Technical Representative
501-352-6670 todd.green@charlottepipe.com

SPECIALLY COATED CAST
IRON FOR AGGRESSIVE
DWV APPLICATIONS.



Thomas Deberson - tdeberson@medpipe.com - 614-353-8594 - www.medpipe.com

MEDPIPE

QUALITY PRODUCTS & SERVICES

PROFESSIONAL & EXPERIENCED STAFF

MULTIPLE LOCATIONS & ABUNDANT RESOURCES

**ALL OF YOUR MEDICAL GAS PRODUCTS
& SERVICES UNDER ONE ROOF**

Medical Gas System Equipment Sales, Inspection, Service & Repair

HIGHLY-TRAINED PLUMBERS

The Cleveland Plumbing Industry actively promotes the most rigorous and effective standards for our local contractors in the plumbing and mechanical industry.



We can embrace these high standards because our plumbing technicians receive the finest and most comprehensive training in the world - allowing our Northeast Ohio contractors to deliver the finest products, service and installation in only the safest of environments.



Working For Our Members:

- Plumbing Codes
- Medical Gas Training
- Back Flow Prevention
- Safety Services
- Labor Relations
- Education & Training
- Promotion
- Government Affairs

 **CLEVELAND
PLUMBING**
I N D U S T R Y

TOLL FREE: 855-CPI-4ALL (855-274-4255)

CLEVELANDPLUMBINGINDUSTRY.COM

UNEQUALED QUALITY.

WOODFORD ROOF HYDRANTS: RELIABLE ROOFTOP WATER.

- Heavy-duty cast iron mounting system can be installed by roofer; hydrant can be installed later.
- RHY2-MS freezeless hydrants automatically drain when shut off, even with hose attached.
- Easy to repair from top of unit without removing hydrant.
- Five-year limited warranty.

*RHY2-MS
Woodford roof
hydrant plumbs
directly to drain*

*Woodford SRH
sanitary hydrant:
no drain required!*



WOODFORD MODEL 68 FREEZELESS UNDERCOVER WALL HYDRANT



- Model 68 freezeless wall hydrant protected by an integral locking cover
- Drains automatically—even with hose attached
- Replaceable locking stainless steel cover flips down for easy access
- Sleek, streamlined design
- Easier to install than recessed box hydrants



Service • Support • Supply

Manufacturer's Representatives

7860 North Central Drive Lewis Center, OH 43035
740-549-1516 740-548-0985 (Fax)

WOODFORD



WOODFORD
MANUFACTURING COMPANY

Excellence. *Always.*

800.621.6032 • www.woodfordmfg.com

7737 Reinhold Drive
Cincinnati, OH 45237
Phone (800) 542-1682
Fax (877) 476-1682



4640 Hinckley Industrial PKWY
Cleveland, OH 44109
Phone (800) 542-1682
Fax (877) 476-1682
Kim Metzger—Cell 216-406-7974



Representative for Ohio, Indiana, Kentucky

Products for the fire protection, irrigation and waterworks markets. Backflow preventers, control valves, in-building risers, pre-assembled valve station products.



Representative for Ohio, Indiana, Kentucky, W. Pennsylvania, W. Virginia

Manufacturers of PP-RCT polypropylene heat fusion pipe and fittings for multiple fluid handling systems.



Representative for Ohio, Indiana, Kentucky

Armstrong Pump is an established leader in fluid flow innovation and is internationally recognized for design efficiency, long service life and operating economy.



Representative for Ohio, Indiana, Kentucky

Manufacturers of stainless steel drainage systems. Product ranges from standardized products to customized drains.



Representative for Ohio, Indiana, Kentucky, W. Pennsylvania, W. Virginia

Modular board, insulation, vapor barrier, and radiant floor tube holding



Representative for Ohio, Indiana, Kentucky

The world's leading provider of flexible stainless steel connectors for natural/LP gas and fluid conveyance applications.



Representative for Ohio, Indiana, Kentucky

An industry leader in manufacturing backflow prevention assemblies and related flow control products servicing the irrigation market.



Representative for Ohio

Fiat is a leader in the development and manufacturing of plumbing products for the commercial, institutional and residential markets.



Representative for Ohio, Indiana, Kentucky

Manufacturer of oil/water separator, wastewater treatment systems products.



Representative for Ohio, Kentucky

Offers plumbing hangers, straps, fasteners and other solutions for installation of plumbing products and pipe.



Representative for Ohio & Kentucky

Enclosures for backflow preventers for outdoor installations.



Representative for Ohio, Indiana, Kentucky

A premier producer of commercial and institutional restroom solutions.



Representative for Ohio

Innovative systems integrating mechanical and electrical technology to provide control systems to promote safety in science laboratories



Representative for Kentucky, Ohio

Mueller Steam Specialty is the world's largest supplier of strainers and the number one provider of specialty products serving the valve industry.



Representative for Ohio, Indiana, Kentucky

Acid waste, high purity, double-containment pipe and systems.



Representative for Ohio, Indiana, Kentucky

Manufacturers of thermostatic mixing valves for building, point-of-use and emergency equipment, tub/shower systems with pressure balancing, thermostatic, or combination shower controls.

A WATTS INDUSTRIES CO.



Representative for Ohio, Indiana, Kentucky, Western Pennsylvania, West Virginia

Manufacturers of faucets, shower systems, showerheads, eyewash and drench shower systems for commercial, residential, hospital, and industrial uses.

Absolutely the best.



Representative for Ohio, Kentucky

Leader in complete control solutions for radiant floor and baseboard heating systems, multi-stage boiler plants, and automatic snow melting systems.



Representative for Ohio, Kentucky, Indiana, West Virginia, Western PA.

Manufacturers of quality brass nipples since 1901.



Representative for Ohio, Kentucky, Indiana, West Virginia, Western PA.

Flexible corrugated piping systems for natural gas and propane, as well



Representative for Ohio, Indiana, Kentucky

Premier manufacturer of plumbing valves including PRV's, control valves, backflow preventers, gate/globe/check valves, butterfly valves, hydronic heating valves, water heater installation products, quick-connect fittings,

IntelliStation™:

The smarter way
to deliver tempered water



The Intelligent Water Mixing and Recirculation System

The IntelliStation™ provides unmatched levels of control over hot water delivery in commercial and institutional buildings.

- Precise digital control to $\pm 2^{\circ}\text{F}$
- Smart, easy-to-use controller with color touchscreen
- BAS integration
- Access to rich system data
- Integrated pump control for reliable, consistent temperatures
- Easy commissioning, repair, and management
- Sanitization mode allows for high temperature system purges
- Compliant with lead free legislation requirements

Learn about the smarter water mixing solution at
PowersControls.com/IntelliStation

POWERS™
A Watts Water Technologies Company



ESTABLISHED 1988

Why Join ASPE

When you join ASPE, you become part of a worldwide family of engineering and design professionals and gain immediate access to their combined technical knowledge and industry support.

-  Professional Growth & Development
-  Networking
-  Industry Publications
-  Industry Events
-  Scholarship Program

[Join ASPE Today](#)

Get Involved

Chapters

ASPE has more than 7,400 members. Find your local ASPE Chapter.



AYP

Establish contacts and share experiences.



WOA

Engaging, retaining and advancing women in the industry.



RC FREY & ASSOCIATES
MANUFACTURERS' REPRESENTATIVE

REPRESENTING THE FINEST IN
COMMERCIAL PLUMBING FOR MORE
THAN 50 YEARS

330-425-2555 — WWW.RCFREY.COM

ZOELLER **ZOELLER**
ENGINEERED PRODUCTS

INDUSTRIES TOPP
INCORPORATED

SCHIER
LIFETIME GUARANTEED
GREASE INTERCEPTORS

PPP
Precision Plumbing Products

STRIEM

V Systems

CLARUS
ENVIRONMENTAL



THE MIFAB ADVANTAGE

IN STOCK AND READY TO SHIP!

 PINNACLESALES
Phone: 800-253-7010
Email: sales@pinnacle reps.com
WWW.PINNACLEREPS.COM



QUICK HUB COUPLINGS:

NO NEED TO SEPARATE THE GASKET FROM THE SHIELD - INSTALLATION READY. JUST PUSH ON THE PIPE!



GRP TRENCH:

RIGID LIKE POLYMER CONCRETE BUT NOT FRAGILE. COMPETITORS MAXIMUM TEMPERATURE AT 140°F. OUR MAXIMUM TEMPERATURE AT 212°F!



TOP SET STRAINERS:

BRING THE STRAINER TO GRADE WITHOUT REMOVING THE GRATE AFTER THE CONCRETE POUR. JUST TURN THE THREE PHILLIPS HEAD SCREWS!



RPZ AND DC BACKFLOW:

ACCESS BOTH CHECKS FROM ONE ACCESS POINT. ALL STAINLESS STEEL BODY AND SHORTEST LAY LENGTH!



SIPHONIC DRAINAGE:

PIPES ARE FLUSHED AT HIGH VELOCITY AND SELF-CLEAN AS AIR EXITS THE SYSTEM. PIPE DIAMETER & MATERIALS ARE REDUCED BY HALF!



HDPE INTERCEPTORS:

LIFETIME WARRANTY. GENERIC CUT TO FIT ADS RISERS. PDI AND ASME APPROVED!

WWW.MIFAB.COM

ASPE²⁴ Chapter
Award of Merit

2023 – 2024 Recipient

** Local Chapters are not authorized to speak for the Society