

Cleveland Chapter of The American Society of Plumbing Engineers
August 2025

CHAPTER OFFICERS

President

JOHN VARGA, P.E.
Scheesser Buckley Mayfield, Inc.
Email: jvarga@sbmce.com
(330) 526-2715

V.P. Technical

MARLON WRIGHT P.E., CPD
T/E/S Engineering
Email: mwright@tesengineering.com
(440) 871-2410

V.P. Legislative

CHRIS STACKHOUSE
Rep Source, LLC
Email: cstackhouse@repsourcecellc.com
(614) 315-6606

V.P. Membership

FRANK MASTROIANNI JR.
Mastroianni & Associates, Inc.
Email: frankjr@mastroiannihvac.com
(440) 786-1100

Treasurer

KEVIN NOBLE, P.E., LEED AP
Scheesser Buckley Mayfield, Inc.
Email: knoble@sbmce.com
(330) 526-2714

Administrative Secretary

DAN EVANS, P.E., CPD, GPD
HEI Engineering Group, Inc.
Email: evans@hei-engineering.com
(330) 262-0042

Corresponding Secretary

JOE DEUCHER, CPD
Stantec
Email: joseph.deucher@stantec.com
(216) 298-0641

Affiliate Liaison

KATHY KIRSCHNICK
Johnson Controls
Email: kkirschnick123@gmail.com
(216) 904-6656

AYP Group Liaison

TY MYGRANTS
DLR Group
Email: tmygrants@dlrgroup.com
(216) 522-1350

WOA Group Liaison

KATHY KIRSCHNICK
Johnson Controls
Email: kkirschnick123@gmail.com
(216) 904-6656

Chapter Ambassador

KEITH BUSH FASPE, CPD, GPD, CSI
Email: kbush@wright-engineering.com
(330) 815-9368

Newsletter Editor

MICHAEL DRAB
Thorson Baker & Associates, Inc.
Email: mdrab@thorsonbaker.com
(330) 659-6688

From the President:



The 2025-2026 season began with our annual ASPE Cleveland Chapter Golf Outing held at Ironwood Golf Course. A special thank you to Kathy Kirschnick for leading the event. I would like to thank all our sponsors for their continued support in making this a great event!

Please welcome our newest members to the Cleveland Chapter, Samantha Lewis and Ryan Duffield with Merlo Energy.

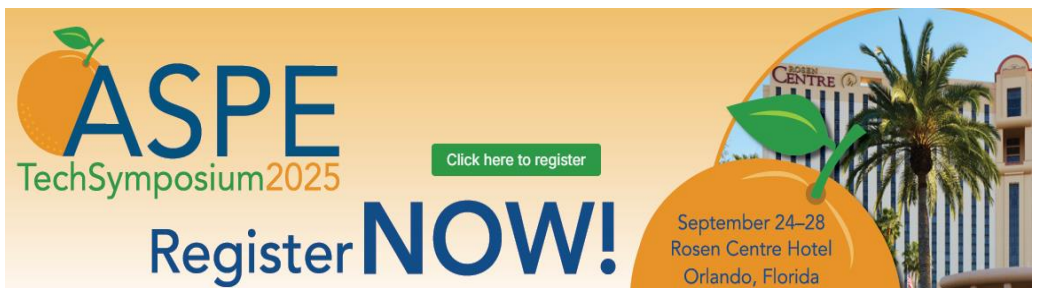
Save the Date! The annual Clambake Social at the Cleveland Yachting Club will be held on Wednesday, September 10, 2025. This event will be held at the Center Isle location. See the flyer in this month's newsletter for additional information.

Registration is now OPEN! ASPE 2025 Technical Symposium is taking place in Orlando, Florida from September 24 – 28, 2025. Register at www.aspe.org.

Let us know if there are any specific topics you would like to see our chapter sponsor. We are always looking for new ideas. Remember, without membership and participation there is no local chapter.

Have a great summer!

Regards,
John A. Varga, P.E.
President, ASPE Cleveland Chapter



The banner features the ASPE logo on the left, a green button with the text "Click here to register" in the center, and a large "Register NOW!" in bold blue letters on the right. The background includes a palm tree and a building labeled "ROSEN CENTRE".

September 24-28
Rosen Centre Hotel
Orlando, Florida

ASPE CLAMBAKE SOCIAL



Wednesday September 10, 2025

Cleveland Yachting Club Center Isle Facility

Rocky River, OH



The first ASPE meeting of the fiscal year will take place at this annual event. This meeting is member "appreciation and participation" and is open to all Family members and Friends.

Our Chapters are one of the most successful chapters in the country because of its members. The Clam Bake is a perfect time to "participate" and meet other members!

THE CLAM BAKE WILL INCLUDE:

- CLAM CHOWDER
- ONE DOZEN CLAMS*
- CHICKEN **AND** STRIP STEAK
- CORN ON THE COB
- SWEET POTATOES OR REDSKINS
- DINNER ROLLS WITH BUTTER
- DESSERT
- COFFEE, DECAF COFFEE & TEA

Cost per Bake - \$50.00

Cocktails served at 5:30 PM • Dinner at 6:30 PM

* Additional dozen clams available for \$15.00



The tradition still remains...
Whoever shows up in a clam
suit will receive a free
dozen clams!

MEMBER NAME _____

NUMBER OF BAKES _____ X \$50.00 = \$ _____

ADDITIONAL DOZEN _____ X \$15.00 = \$ _____

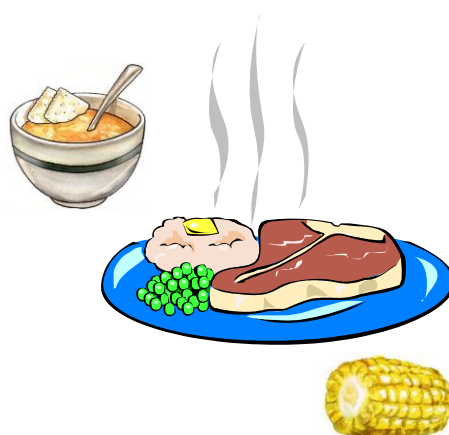
TOTAL ENCLOSED = \$ _____

Please make checks payable to:

ASPE Cleveland Chapter
Mail to: Craig McDowell
Omar McDowell Company
25109 Detroit Rd., #320
Westlake, Ohio 44145

Send your RSVP to Craig at:

Fax: (440) 808-2266
Phone: (440) 808-2280
Email: craig@omarmcdowell.com



****RESERVATION DEADLINE: SEPTEMBER 8, 2025****

**2025 - 2026 ASPE Meeting/Plumbing Class Schedule
September 2025**

<u>Date – Time – Place</u>	<u>Topic</u>	<u>Speaker(s)</u>	<u>Exhibitors</u>
September 10, 2025 – 6:00 PM Cleveland Yachting Club Cost: \$50	Clam Bake Topic – Social Event ASPE Cleveland Chapter	N/A	N/A
October 8, 2025 – 6:00 PM Slyman's Tavern Independence Cost: \$20	Coated Cast Iron and Chemical Waste Piping	Cameron Baucom - Charlotte Pipe	BWA South
November 12, 2025 – 6:00 PM Slyman's Tavern Independence Cost: \$20	Vacuum Waste Systems	Eddie Villalta Building Division EVAC North America Inc.	EVAC North America Inc.
December 10, 2025 – 6:00 PM Slyman's Tavern Independence Cost: \$20	TBD	TBD	TBD
January 14, 2026 – 6:00 PM Slyman's Tavern Independence Cost: \$20	TBD	TBD	TBD
February 11, 2026 – 6:00 PM Slyman's Tavern Independence Cost: \$20	TBD	TBD	TBD
March 11, 2026 – 6:00 PM Slyman's Tavern Independence Cost: \$20	TBD	TBD	TBD
April 8, 2026 – 6:00 PM Slyman's Tavern Independence Cost: \$20	TBD	TBD	TBD
May 13, 2026 – 6:00 PM Slyman's Tavern Independence Cost: \$20	TBD	Julia Timberman, P.E. Air Control Products	N/A

**2025 - 2026 ASPE Meeting/Plumbing Class Schedule
September 2025**

The above is the meeting/plumbing class schedule for the 2024-2025 ASPE year. Updated information will appear in subsequent newsletter issues. All meetings will be at Slyman's Tavern, 6901 Rockside Road, Independence unless otherwise indicated. The meeting/plumbing class, including dinner, is \$20.00 unless noted otherwise. Reservations are required. A mini product show will be held before each meeting/plumbing class highlighting some of the materials discussed in class or products that will assist the engineer in understanding what they are designing or specifying. All plumbing classes will qualify for 0.1CEU hours and will assist in preparation for the ASPE CPD examination.

The following times will be enforced as strictly as possible.

Make your reservations a minimum of two days before the meeting/class and try to be on time.

Evening Seminars:

- | | |
|---|----------------|
| • Chapter Board Meeting | 5:00 - 5:30 pm |
| • Sign-in / Meet and Greet / Vendor Display | 5:00 - 6:00 pm |
| • Dinner | 6:00 - 6:30 pm |
| • Presentation | 6:30 - 7:30 pm |
| • Q & A / Vendor Product Display | 7:30 - 8:00 pm |

Lunchtime Seminars:

- | | |
|--|--|
| • Mini Product Show | 11:30 - 11:45 am |
| • Sign-In / Meet and Greet / Vendor Displays | 11:45 - 12:00 pm |
| • Lunch | 12:00 - 12:30 pm (Seminar to begin during lunch) |
| • Presentation | 12:00 - 1:00pm |
| • Q & A / Vendor Display | 1:00 - 1:30pm |

PROUDLY PROVIDING THERMOSTATIC BALANCING SOLUTIONS FOR OVER 10 YEARS

Hot Water Recirculation



In 2012, CircuitSolver® was developed to conquer the challenges inherent to conventional manual balancing valves. As the market's first **thermostatic balancing valves** used for domestic hot water recirculation, CircuitSolver® balances a system based solely on temperature as opposed to pressure or flow to guarantee hot water at **every fixture**. Dynamically balancing a system, CircuitSolver® ultimately **ended complaints** about the lack of hot water, and eliminated balancing processes and callbacks.

Cold Water Recirculation



Last year, we implemented our thermal actuator technology into the CircuitSolver® Union Cold Water balancing valves. These valves are installed in domestic Cold Water recirculation systems to mitigate the risk of Legionella and other bacterial growth. Cold water recirculation is becoming more prominent in hospitals to reduce water stagnation and ensure residual chlorine is distributed but can be beneficial to any commercial building that could experience periods of low flow or non-use.

PINNACLESALES



www.pinnacle reps.com



(800) 253-7010



T&S has your **plumbing** solutions.

Discover the lasting reliability of T&S. From hose reels to sensor faucets, lab equipment to high-end fixtures, T&S offers all the plumbing products you need, with reliability built in. Contact your representative today to learn how T&S can outfit any facility, or visit tsbrass.com.



T&S plumbing products represented in Cleveland by: Midwest Spec., LLC • 513-353-9191

HIGHLY-TRAINED PLUMBERS

The Cleveland Plumbing Industry actively promotes the most rigorous and effective standards for our local contractors in the plumbing and mechanical industry.



We can embrace these high standards because our plumbing technicians receive the finest and most comprehensive training in the world - allowing our Northeast Ohio contractors to deliver the finest products, service and installation in only the safest of environments.



Working For Our Members:

- Plumbing Codes
- Medical Gas Training
- Back Flow Prevention
- Safety Services
- Labor Relations
- Education & Training
- Promotion
- Government Affairs

 **CLEVELAND
PLUMBING**
I N D U S T R Y

TOLL FREE: 855-CPI-4ALL (855-274-4255)

CLEVELANDPLUMBINGINDUSTRY.COM



PLUMBING HEATING SALES

Manufacturers Represented

AMERICH[®]

ARC
AKW

BEMIS[®]

GERBER[®]

ion[®] Technologies
A division of Metropolitan Industries, Inc.

navien

THERMASSOL[®]
Steam & Showering Systems

Fipi USA

viega

ZILMET[®]
globally renowned



Line Card – October 2024

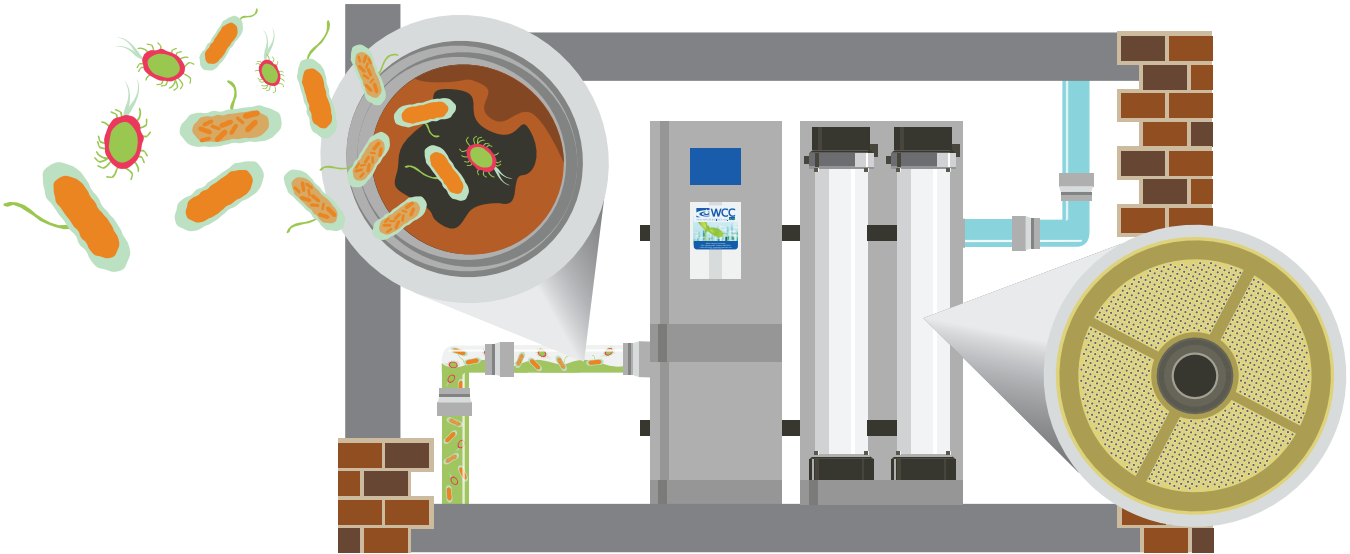
107 Cypress Street S.W. Reynoldsburg, OH 43068
Phone: 740-927-6880 Fax: 740-927-4545
www.RepSourceLLC.com

Manufacturers Representatives Serving Plumbing, Mechanical, Electrical, Architectural and Water Treatment Industries. Representing the following product lines:

A Better Idea/Quick Block/EZ Sleeper www.pipeease.com	E-Z Sleeper / Quick Block / Pipe Ease – Rooftop pipe and equipment support blocks and deck flanges.
AB&I Foundry www.abifoundry.com	No-Hub and Hub and Spigot Cast Iron Soil Pipe and Fittings
Anaco-Husky www.anaco-husky.com	American made complete line of heavy-duty Husky high performance and standard no-hub couplings, Cremco specialty transitional couplings and service weight gaskets.
Apollo Valves Backflow www.apollovalves.com	Apollo Valves backflow prevention products for plumbing, fire protection, waterworks and irrigation markets.
Atlas Filtri https://us.atlasfiltri.com	Water filtration solutions including: Filter Housings, Cartridges, Whole House and Tankless Water Heater Complete Kits, Hydra Self-Cleaning, Reverse Osmosis and ScaleArmor Polyphosphate.
Bradley www.bradleycorp.com	Washbar all in one hand washing stations, washfountains, Express and Frequency lavatory systems, Navigator thermostatic mixing valves, showers, safety equipment, metering faucets, patient care, Terreon solid surface products, Evero natural quartz products, Keltech safety/skid water heaters.
Creative Industries www.creative-terrazzo.com	Pre-cast terrazzo shower floors, mop basins, concrete laundry tubs and stairs or benches, terrazzo or concrete or glass counter tops and custom terrazzo products.
Elkhart Products www.elkhartproducts.com	Elkhart Products wrought copper tube fittings, cast fittings and EPC engineered push-fit fitting brands include TECTITE and CopperLOC .
Franke www.franke.com/us/en/water-solutions/products.html www.franke.com/us/en/home-solutions.html	Commercial, Institutional, Healthcare, Scullery, Utility, Vanity and Handwash stainless steel sinks, faucets and accessories. Residential and Luxury Mythos and Maris stainless steel, granite, fireclay, work center and farmhouse kitchen sinks, faucets and specialty products.
Hydrotek www.hydrotekintl.com	Sensor operated flush valves and faucets available in both battery and AC models.
Kemper Water Control www.kemperwatercontrol.com	Engineered Flow Splitter and Balancing Valve system technology for domestic water and Legionella mitigation solutions.
Liberty Pumps www.libertypumps.com	Sump, drain and condensate, utility, transfer, effluent and sewage pumps, Omnivore and ProVore grinders, Accent II macerating toilet system and engineered pump system packages.
Marlo www.marlo-inc.com	Commercial & industrial water softeners, media filters, reverse osmosis, dealkalizers, deionized and EDI electro-deionized water treatment equipment.
Mountain Plumbing Products www.mountainplumbing.com	High performance Water Appliances “Made Better by Design” including plumbing accessories, water filters, waste disposers, instant hot water tanks, and water chillers.
Plumberex www.plumberex.com	Pro-Extreme , Trap Gear , Handy Shield Maxx and Clear Shield lavatory trap and riser insulation kits. Mushroom Flange and Floor Sink Carrier specialty products.
Raychem / nVent Thermal Solutions www.nVent.com	HWAT self-regulating heating cable system for domestic hot water, XL-Trace , Gardian and WinterGard freeze protection cable, Pyrotenax MI and Electromelt snow and anti-icing cable, IceStop , RIM and FrostGuard roof and gutter de-icing cable, RaySol , NuHeat floor warming and freezer frost heave cable.
Schott Scientific Glass / Kimax http://www.us.schott.com/en-us/products/kimax	Glass piping for acid waste and containment piping systems. Knight-Ware acid neutralizing sumps.
Stiebel Eltron http://www.stiebel-eltron-usa.com	Electric tankless/instantaneous/mini tank water heaters for commercial, residential and industrial applications, emergency shower eyewash heaters, Accelera E heat pump water heaters, hot water tanks for solar, geothermal, and hydronic, instant hot water dispensers, electric fan heaters and hand dryers.
Tight Seal Gasket www.tightsealgasket.com	Toilet & urinal setting with Innovative, flexible design, sticky, reusable, elastomer toilet & urinal gaskets. Compresses up to 50%. Will not break or become brittle. Allows movement without leaking.
TOTO USA www.totousa.com	Global Manufacturer of Residential and Commercial Plumbing Fixtures, vitreous china, Washlet toilet seats, NeoRest toilets and Accessories.
Triangle Tube www.triangletube.com	Commercial and Residential condensing combi and solo, wall mounted and floor mounted boilers, direct fired water heaters, indirect fired water heaters and heat exchangers.
Water Control Corporation www.watercontrolinc.com	High-Capacity Ultra-Filtration for Legionella & Pathogen control, rainwater reclamation systems with ultraviolet or ozone purification, high purity water systems, water softeners, water filters.
Waterless Company www.waterless.com	Waterless “No Flush” vitreous china and fiberglass urinals with EcoTrap and Blue Seal liquid, UTC Sentinel sensor flushing systems. Everprime floor drain traps primer liquid. Greencleen chemicals.
Xerxes www.xerxes.com	Fiberglass Water and Wastewater storage solutions. Water storage, grease, oil, solids interceptors, and double wall decontamination tanks.
Additional Products Distributed: www.repsourcellc.com	Bathroom Partitions (solid plastic, baked enamel, stainless steel, laminate and phenolic), Bathroom Accessories, Lockers (solid plastic and metal), Water treatment products.

LEGIONELLA:

Don't Manage the Symptoms. Control the Cause!



We remove Legionella & pathogens *before* they enter your plumbing and mechanical system.

HIGH-CAPACITY ULTRAFILTRATION

Point-of-Entry • Point-of-Use • Hot Water Recirc Treatment



seccua
German Hollow-Fiber
Membrane Technology



Where NATURE & SCIENCE meet.™



- 99.999% removal of Legionella and pathogens (3rd party-verified)
- A firewall for the entire building
- Drastic reductions in nutrients and biofilms
- 500 GPM+, minimal pressure loss
- Self-cleaning, long-lasting, low maintenance
- Automatic membrane integrity verification (Meets strict EPA guidelines)



PROTECT YOUR FACILITY AND LEARN MORE AT WATERCONTROLINC.COM

VIEGA VALVES

**MORE SIZES.
MORE MATERIALS.**

The leader in pressing just got bigger. That means all Viega connections on your upcoming jobs. Who doesn't like the sound of that?

Dan Sabetta

Technical Manager – Great Lakes Region



**SCAN
WITH PHONE
TO CONTACT**



viega

Advance Thermal Corp.

Removable Insulation & Acoustic Covers

AercoCommercial Condensing Boilers
Commercial Condensing Water Heaters
Indirect & Semi-instantaneous Heaters**Bell & Gossett**

Balance Valves

Automatic Flow Limiting
Manual Flow Limiting
*Pressure Independent Control*Hydronic Specialties
Expansion/Compression Tanks
Centrifugal Pumps*Base Mounted*
Close Coupled
Double Suction
Horizontal Split Case
In-Line
Multi-Stage
Shell & Tube
Plate Heat Exchangers
*Replacement Tube Bundles*Heat Transfer Packages
Pressure Booster Systems
Submersible Pumps
Variable Speed Systems
Vertical Turbine Pumps**Bobco**

Differential Gauge Kits

Bock Water HeaterGas Fired Water Heater
Electric Water Heater
Oil Water Heater
Indirect Water Heater
Solar / Geo Thermal Water Heater
Electric Point of Use Water Heater**BoilerMag**Magnetic Filters
Basic System Chemical Solutions**Cemline Corp.**ASME Tanks
Boiler Blowdown Separators
Condensate Coolers
Hot Water Storage Heaters
Packaged Water Heaters
Replacement Tube Bundles Stone
Steel Lined Tanks
Unfired Steam Generators**Danfoss****Greater Toledo Area**Variable Frequency Drives Motor
Soft Starters**Domestic Pump**Boiler Feed Systems
Condensate Return Pumps
Pressure Powered Pumps
Vacuum Pumps**Dow Heat Transfer Fluids**DOWTHERM™ SR-1 Ethylene Glycol
DOWFROST™ HD Propylene Glycol**Dri-Steam****Greater Toledo Area**Steam Injection Humidifiers
Gas To Steam Humidifiers
Steam To Steam Humidifiers
Electric Steam Humidifiers
Evaporative Humidifiers
Ultrasonic Fog Humidifiers**Duravent****Northern & Central Ohio**

High Performance Chimneys & Vents

Goulds / G&L CommercialEnd Suction Pumps
Vertical Multi-stage
Pressure Booster Systems
Vortex Waste Water**Griswold Controls**Automatic Balance Valves
Manual Balance Valves
Pressure Independent Control
Valves Coil Hook-up Kits**General Water Systems**Chemical Free Water Treatment
Centrifugal Separators**Hoffman Specialties**Steam Traps & Specialties
Condensate Return Pumps
Pressure Regulating Valves**Kadant Johnson**

Pressure Powered Pumps

McDonnell & MillerBoiler Safety Controls
Level Controls
Flow Switches**Metraflex Company**Flexible Pump Connectors
Expansion Joints & Guides
Non-slam Check Valves
Ball & Butterfly Valves**Miljoco**Pressure Gauges
Thermometers
Accessories**Niles Steel Tank****Greater Toledo Area**

Glass Lined & Steel Storage Tanks

NTIResidential/Commercial Condensing Boilers
Residential/Commercial Condensing Water Heaters**Peterson Equipment Co.**

Pressure / Temperature Test Plugs

**ProPak Solutions**Hot Water/Chilled Water Pump Skid Package
Heat Transfer Skid Package
Steam & Hydronic Boiler Skid Package
Air Cooled Chiller Skid Package
Water Heater Skid Package
Snowmelt Skid Package
Domestic Pressure Booster Package**PVI****Northern & Central Ohio**Gas Fired Water Heaters
Steam Fired Water Heaters
Multiple Energy Water Heaters
Oil & Oil/Gas Water Heaters
Storage Tanks
Water Quality
Digital Mixing Valves**Rovanco**Pre-insulated Pipe
Containment Pipe**Tower Tech Cooling Towers**High Efficiency Cooling Towers
HVAC Cooling Towers
Process Cooling Towers
Power Generation Cooling Towers**Vertiflo**Pedestal Mount – Sump Pumps
Base Mounted Pumps
Vertical Pumps**Webster Engineering****Greater Toledo Area**Single & Dual Fuel Burners
Landfill Gas Burners
High Turndown Burners
Temp-A-Trim: Air Density Control System**Wessels Company**ASME & Glass Lined Storage Tanks Glycol Fill Systems
Engineered Tanks

Replacing Your Water Heater Every Few Years is Not Our Business Plan



Conquest[®] condensing, gas-fired water heaters are constructed from AquaPLEX[®] duplex stainless steel so they're corrosion-resistant in potable water at any temperature. Available in 199-1000 MBH, Conquest provides even more BTUs in small spaces and fits through a standard 36-inch doorway. With a thermal efficiency of up to 96%, long product life and a 15-year tank and heat exchanger warranty, you can't afford not to have one.

Call R.L. Deppmann or visit our Monday Morning Minutes blog at deppmann.com for information on PVI Water Heaters

800.589.6120



800.784.8326 | pvi.com



Premier manufacturer of plumbing valves including PRV's, control valves, backflow preventers, butterfly valves, hydronic heating valves, quick-connect fittings, water pex, drainage, & pure water filtration.



Products for the fire protection, irrigation, and waterworks markets. Backflow preventers, control valves, in-building risers, pre-assembled valve station products.



Manufacturers of stainless steel drainage systems. Product ranges from standardized products to customized drains.



Plumbing flange design & manufacturing, wholesale distribution and installation services to the plumbing and mechanical piping Industry.



The world's leading provider of power tools, hand tools, and jobsite equipment.



The world's leading provider of flexible stainless steel connectors for natural/LP gas and fluid conveyance applications.



Manufacturers of eyewash and drench shower systems for commercial, hospital, and industrial uses.



An industry leader in manufacturing backflow prevention assemblies.



Manufacturer of oil/water separator, wastewater treatment systems products.



Offers plumbing hangers, straps, fasteners and other solutions for installation of plumbing products and pipe.



Enclosures for backflow preventers for outdoor installations.



Utility control system to promote safety for the student as well as the instructor in the science laboratory learning environment.



Leading manufacturer of plumbing tools and equipment.



MAPA Products has been a driving force in the manufacturing of rooftop supports.



Mueller Steam Specialty is the world's largest supplier of strainers and the number one provider of specialty products serving the valve industry.



Worldwide leader of bottled and pressure water coolers, providing point-of-use filtration equipment, drinking fountains, dehumidifiers and water pitcher systems.



Acid waste & high purity pipe and fitting systems.



Manufacturers of thermostatic mixing valves for building, point-of-use and emergency equipment, tub/shower systems with pressure balancing, thermostatic, or combination shower controls.



Leader in complete control solutions for radiant floor and baseboard heating systems, multi-stage boiler plants, and automatic snow melting systems.



Since 1950, Wal-Rich has been servicing the Plumbing Wholesaler with the finest in plumbing, heating, industrial and hardware specialties.



Flexible corrugated piping systems for natural gas and propane, as well as iron fittings. Applications include single & multiple-family residential as well as industrial and commercial buildings.

IntelliStation™:

**The smarter way
to deliver tempered water**



The Intelligent Water Mixing and Recirculation System

The IntelliStation™ provides unmatched levels of control over hot water delivery in commercial and institutional buildings.

- Precise digital control to $\pm 2^{\circ}\text{F}$
- Smart, easy-to-use controller with color touchscreen
- BAS integration
- Access to rich system data
- Integrated pump control for reliable, consistent temperatures
- Easy commissioning, repair, and management
- Sanitization mode allows for high temperature system purges
- Compliant with lead free legislation requirements

Learn about the smarter water mixing solution at
PowersControls.com/IntelliStation

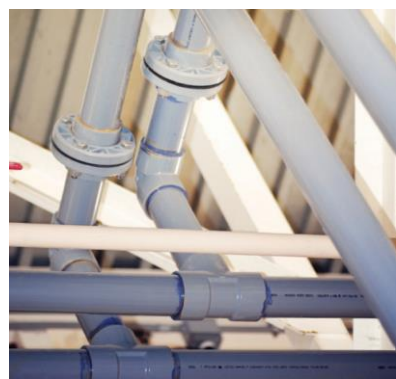
POWERS™
A Watts Water Technologies Company



Spec with Confidence



PRECISELY ENGINEERED. REAL-WORLD TESTED.



Corzan® Material and Piping Solutions offer a complete tie-in to tap solution made up of Schedule 80 pipe & fittings, flanges, valves, and specialty adapter fittings including: MIP Threads x CPVC, FIP Threads x CPVC, Stub Out Elbows, and Male Sweat Adapters. Potable water systems designed with Corzan CPVC offer the best solution for reducing biofilm buildup and the growth of Legionella while being immune to degradation caused by standard disinfection procedures.

Performance Ratings

- Plenum rated for water distribution piping (ASTM E84-23)
- Conforms to NSF International Standards 61 and 14
- Withstands ANSI/ASHRAE Guideline 188 water treatment protocols
- Innately resistant to corrosion, pitting and scaling
- Resists biofilm that can lead to waterborne illness
- Pressure rated for temperatures up to 200°F

Diverse Applications

- Academic Buildings
- Multi-Family Housing
- Hotels
- Hospitals
- Data Centers
- Power Generation
- Wastewater Treatment Plants
- Chemical Processing Facilities



**COLUMBUS OFFICE**

4501 SUTPHEN CT
HILLIARD, OH 43026
PHONE - (614) 876-2477
FAX - (614) 876-0238
orders@bwassouth.com

CINCINNATI OFFICE

10869 READING RD
CINCINNATI, OH 45241
PHONE - (513) 733-4771
FAX - (513) 733-4867
orders@bwassouth.com

CLEVELAND OFFICE

6111 CAREY DR UNIT 2 & 3
VALLEY VIEW, OH 44125
PHONE - (330) 655-9220
FAX - (330) 655-9222
noorders@bwassouth.com

WWW.BWASOUTH.COM / QUOTES@BWASOUTH.COM

MANUFACTURERS' REPRESENTATIVES OF THE HIGHEST QUALITY PLUMBING AND SPECIALTY BUILDING PRODUCTS



ELKAY

CHARLOTTE
PIPE AND FOUNDRY COMPANY

BrassCraft®



hadrian®

WADE



The new degree of comfort.™



IBC
Better Boilers

MAAX®
Enjoy the experience



cd
comfortdesigns



SWAN



AQUATIC

MAIDSTONE

IPS
CORPORATION



Just
manufacturing



Eemax®
evolving hot water

Technical
EDUCATION
Program

ASPE
TechSymposium2025

September 24-28
Rosen Centre Hotel
Orlando, Florida

MedGas
Workshop

American Society of Plumbing Engineers

Now In-Person
AND
Online!

Midwest
Spec.

T&C
PLASTICS

SAFE-T-COVER®
ENCLOSURES DESIGNED FOR THE WORLD'S WATER SYSTEMS™

CHROMALOX
Advanced Thermal Technologies

Watson
McDaniel

Guardian

HEAT-TIMER®
CORPORATION

Brimar
INDUSTRIES

(440)-944-7500

clesales@mwspec.com

29315 Clayton Ave.
Wickliffe, Ohio 44092

www.mwspec.com



PLUMBING GROUP



Superior Performance & System Reliability

DuRa Pipe™ enhanced epoxy coating applied to cast iron soil pipe and fittings. It is well suited for aggressive DWV applications where greater performance is required.



ABIFoundry.com



Anaco-Husky.com



PIPE & COUPLING

TylerPipe.com

Thomas Deberson - tdeberson@medpipe.com - 614-353-8594 - www.medpipe.com



MEDPIPE

QUALITY PRODUCTS & SERVICES

PROFESSIONAL & EXPERIENCED STAFF

MULTIPLE LOCATIONS & ABUNDANT RESOURCES

ALL OF YOUR MEDICAL GAS PRODUCTS & SERVICES **UNDER ONE ROOF**

Medical Gas System Equipment Sales, Inspection, Service & Repair



CHARLOTTE
PIPE AND FOUNDRY COMPANY

**NOW OFFERING
EDGE HP IRON™**

SPECIALLY COATED CAST IRON FOR AGGRESSIVE DWV APPLICATIONS.

visit www.charlottepipe.com

C. TODD GREEN
Field Technical Representative
501-352-6670 todd.green@charlottepipe.com

CASPE
AFFILIATE SPONSOR



Trombold

Equipment Company

our website: www.trombold.com

*If you need to move water call
us we can help!*

*Storm and sewage—Weil
Domestic boosters - Delta P Carver
Fire—Patterson*

Phone 216-663-8700 Fax 216-663-8702

MASTROIANNI & ASSOCIATES, INC.

Manufacturers' Representative of Products for the Mechanical Trades Since 1984

HOT WATER PRIMETER HEATING, STEAM, ELECTRIC RADIATORS, TOWEL WARMERS

RUNTAL RADIATORS www.runtalnorthamerica.com

LINK SEALS, PIPE SLEEVES, CASING SPACERS, END SEALS

LINK SEAL , GARLOCK , PSI, THUNDERLINE, GPT www.linkseal.com

BARCO BALL JOINTS, PACKED SLIP JOINTS, BELLOWS EXPANSION JOINTS, VENTURI FLOW METERS, SEISMIC 'V'-LOOPS

HYSpan PRECISION PRODUCTS www.hyspan.com

HEAT EXCHANGERS (SHELL & TUBE), AIR & DIRT SEPARATORS, HYDRAULIC SEPARATORS, AUTOMATIC AIR VENTS, PUMPS, SUCTION DIFFUSERS, TRIPLE DUTY VALVES

THRUSH CO www.thrushco.com

DOMESTIC WATER BOOSTER SYSTEMS, SKID MOUNTED HVAC PACKAGES

TIGERFLOW SYSTEMS www.tigerflow.com

HYDRONIC BALANCING VALVES (AUTOMATIC & MANUAL), "COIL PAKS", HOSE PAKS, BYPASS KITS

NEXUS VALVE www.nexusvalve.com

HUMIDIFIERS (STEAM, ELECTRIC, GAS, DISPERSION MANIFOLDS)

PURE HUMIDIFIER www.purehumidifier.com

EXPANSION TANKS, BUFFER TANKS, AIR SEPARATORS, GLYCOL MAKE-UP SYSTEM

JOHN WOOD CO www.johnwood.com

SUMP PUMPS & OIL MINDER / DETECTION SYSTEMS CONDENSATE / BOILER FEED / VACUUM PUMP PACKAGES

STANCOR PUMPS..... www.stancorpumps.com

FEDERAL PUMPS CO..... www.federalpumps.com

PLATE & FRAME HEAT EXCHANGERS

POLARIS..... www.polarisphe.com

PUMPS: END SUCTION, IN-LINE, RECIRCULATION

THRUSH PUMP..... www.thrushco.com

CHECK VALVES, STRAINERS, BUTTERFLY VALVES

TITAN / MUELLER..... www.titanfci.com

BONOMI www.bonominorthamerica.com

FLEX CONNECTORS, EXPANSION JOINTS, NESTED LOOPS, PIPE GUIDES

ENGINEERED FLEXIBLE PRODUCTS..... www.general-rubber.com

GENERAL RUBBER CO..... www.engineeredflex.com

VIBRATION ISOLATION - SPRING HANGERS, VIBRATION CURB BASES, INERTIA BASES

VIBRATION ELIMINATOR CO www.veco-ny.com

PRE-INSULATED PIPE SHIELDS

VALUE ENGINEERED PRODUCTS www.valueng.com

THERMOMETERS, PRESSURE GAUGES, P/T PLUGS, GAUGE ACCESSORIES

WEKSLER GLASS THERMOMETER CORP..... www.wekslerglass.com

7601 First Place Drive ~ Ste A- 13 ~ Phone: 440.786.1100 ~ Fax: 440.786.1103

www.mastroiannihvac.com

UNEQUALED QUALITY.

WOODFORD **ROOF HYDRANTS:** **RELIABLE** **ROOFTOP WATER.**

- Heavy-duty cast iron mounting system can be installed by roofer; hydrant can be installed later.
- RHY2-MS freezeless hydrants automatically drain when shut off, even with hose attached.
- Easy to repair from top of unit without removing hydrant.
- Five-year limited warranty.

RHY2-MS
Woodford roof hydrant plumbs directly to drain

Woodford SRH
sanitary hydrant: no drain required!



WOODFORD MODEL 68 **FREEZELESS UNDERCOVER** **WALL HYDRANT**



- Model 68 freezeless wall hydrant protected by an integral locking cover
- Drains automatically—even with hose attached
- Replaceable locking stainless steel cover flips down for easy access
- Sleek, streamlined design
- Easier to install than recessed box hydrants



Service • Support • Supply

Manufacturer's Representatives

7860 North Central Drive Lewis Center, OH 43035
740-549-1516 740-548-0985 (Fax)

WOODFORD



WOODFORD
MANUFACTURING COMPANY
Excellence. *Always.*

800.621.6032 • www.woodfordmfg.com

RC FREY & ASSOCIATES

MANUFACTURERS' REPRESENTATIVE

REPRESENTING THE FINEST IN
COMMERCIAL PLUMBING FOR MORE
THAN 50 YEARS

330-425-2555 — WWW.RCFREY.COM



Why Join ASPE

When you join ASPE, you become part of a worldwide family of engineering and design professionals and gain immediate access to their combined technical knowledge and industry support.



Professional Growth & Development



Networking



Industry Publications



Industry Events



Scholarship Program

Join ASPE Today

Get Involved

Chapters

ASPE has more than 7,400 members.
Find your local ASPE Chapter.



AYP

Establish contacts and share experiences.



WOA

Engaging, retaining and advancing women in the industry.





Paired with Sloan High-Efficiency Flushometers, our Commercial Toilet and Urinal Systems take water efficiency to the next level.

All Sloan Flushometers are made from a high level of recycled material and are 100 percent recyclable.



Sloan Bio-Deck Sinks utilize natural materials such as corn cobs and other renewable domestic agricultural materials.

Dual-Flush Side Mount Retrofit is a fast, easy way to reduce water consumption.



Sloan Hands-Free Faucets promote cleanliness, hygiene and overall health benefits.



Monitoring Systems reduce operating costs and decrease water consumption.

Water Power

To arrange a personal consultation, call us at **800.982.5839**.

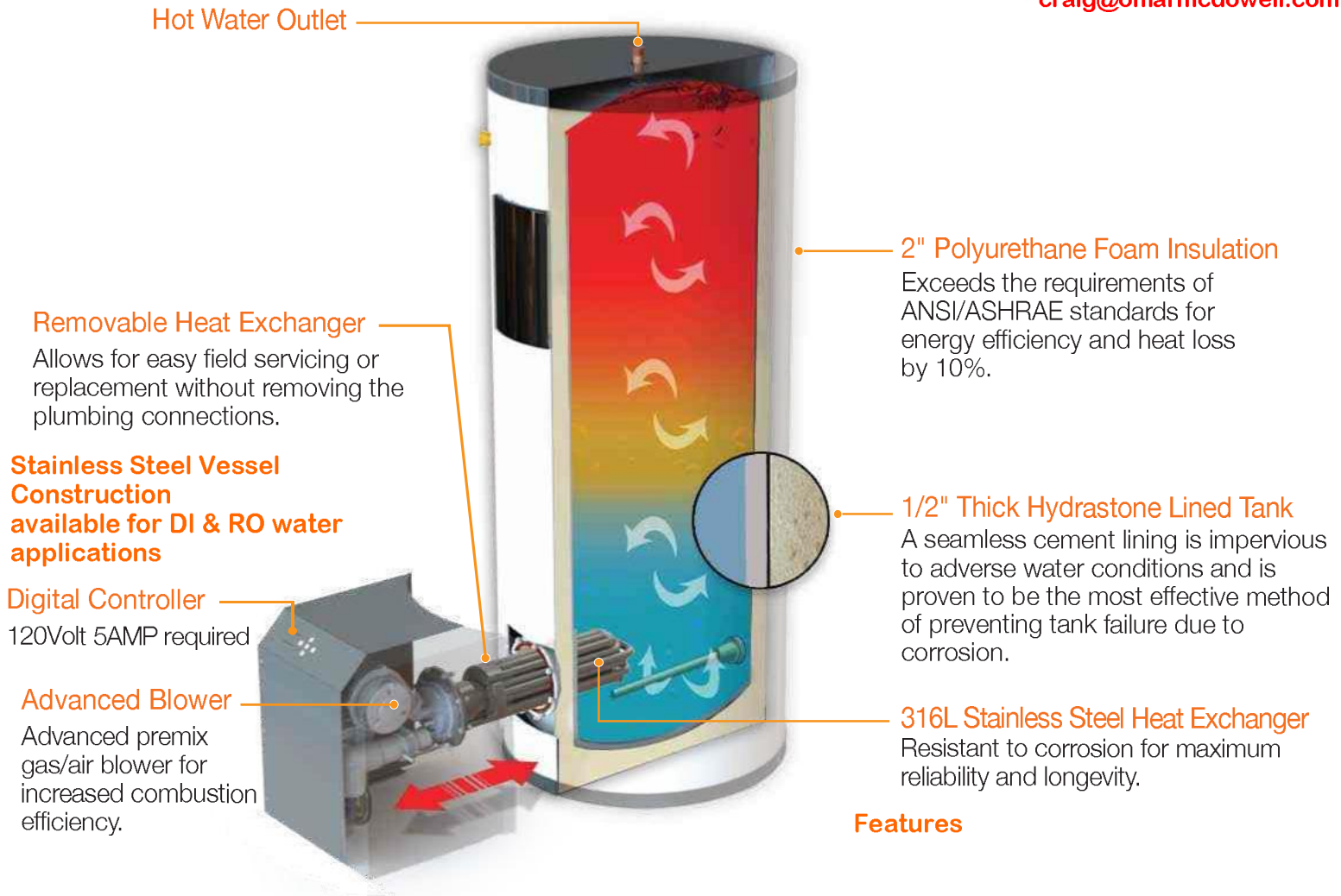
Every day around the world, Sloan advanced integrated water management systems provide elegant, efficient and hygienic washroom solutions for any commercial environment.

SLOAN

Water Connects Us™

Hubbell Prime Gas Water Heater

Represented By:
Omar McDowell Co.
(440) 808-2280
craig@omarmcdowell.com



Other Heat Exchangers

Permanently welded to outer vessel

- ▶ Not removable
- ▶ Not serviceable
- ▶ Heat exchanger failure requires water heater replacement
- ▶ Not repairable
- ▶ Cleaning difficult, time consuming and costly
- ▶ Significant welded surface area increases the probability of failure

VS. ...The Prime Advantage

Modular Construction

- ▶ Fully removable heat exchanger
- ▶ Easily serviced in the field
- ▶ Heat exchanger can be replaced without water heater removal or replacement
- ▶ Repairable
- ▶ Cleaning is quick and easy
- ▶ Minimal welded area reduces the probability of failure

Unprorated
Prorated

PRIME Heat Exchanger Top view



A close-up photograph of a hand operating a brass press valve on a copper pipe. The hand is positioned on the left, with fingers gripping a silver metal lever that has two circular holes. The lever is attached to a brass valve body, which is connected to a thick copper pipe. The background is dark and out of focus.

NIBCO[®]
presssystem[®]

FIND YOUR FIT

**Choose from Over
600 Press Valve SKUs,
the Largest Offering
in the Industry**

- Options ranging from ½" – 4"
- Select from over 65 different valve configurations
- Our total system – valves, fittings and tools – comes with unparalleled service
- Experience the best customer service in the industry – as judged by our customers

**FIND YOUR FIT AT
NIBCO.COM/PRESS**

Amanda Miller | Area Sales Manager
614.634.2516 | millera2@nibco.com

Paul Figuly | Assistant Regional Manager
216-402-7056 | figuly@nibco.com

Aaron Kilburg | Commercial Sales Manager
331-262-0868 | kilburga@nibco.com



THE MIFAB ADVANTAGE

IN STOCK AND READY TO SHIP!



PINNACLE SALES

Phone: 800-253-7010

Email: sales@pinnacleseps.com

WWW.PINNACLESEPS.COM



QUICK HUB COUPLINGS:

NO NEED TO SEPARATE THE GASKET FROM THE SHIELD - INSTALLATION READY. JUST PUSH ON THE PIPE!



TOP SET STRAINERS:

BRING THE STRAINER TO GRADE WITHOUT REMOVING THE GRATE AFTER THE CONCRETE POUR. JUST TURN THE THREE PHILLIPS HEAD SCREWS!



SIPHONIC DRAINAGE:

PIPES ARE FLUSHED AT HIGH VELOCITY AND SELF-CLEAN AS AIR EXITS THE SYSTEM. PIPE DIAMETER & MATERIALS ARE REDUCED BY HALF!



GRP TRENCH:

RIGID LIKE POLYMER CONCRETE BUT NOT FRAGILE. COMPETITORS MAXIMUM TEMPERATURE AT 140°F. OUR MAXIMUM TEMPERATURE AT 212°F!



RPZ AND DC BACKFLOW:

ACCESS BOTH CHECKS FROM ONE ACCESS POINT. ALL STAINLESS STEEL BODY AND SHORTEST LAY LENGTH!



HDPE INTERCEPTORS:

LIFETIME WARRANTY. GENERIC CUT TO FIT ADS RISERS. PDI AND ASME APPROVED!

WWW.MIFAB.COM

ASPE²⁴ Chapter
Award of Merit

2023 – 2024 Recipient

** Local Chapters are not authorized to speak for the Society