

Cleveland Chapter of The American Society of Plumbing Engineers
April 2026

CHAPTER OFFICERS

President

JOHN VARGA, P.E.
Scheesser Buckley Mayfield, Inc.
Email: jvarga@sbmce.com
(330) 526-2715

V.P. Technical

MARLON WRIGHT P.E., CPD
T/E/S Engineering
Email: mwright@tesengineering.com
(440) 871-2410

V.P. Legislative

CHRIS STACKHOUSE
Rep Source, LLC
Email: cstackhouse@repsourcellc.com
(614) 315-6606

V.P. Membership

FRANK MASTROIANNI JR.
Mastroianni & Associates, Inc.
Email: frankjr@mastroiannihvac.com
(440) 786-1100

Treasurer

KEVIN NOBLE, P.E., LEED AP
Scheesser Buckley Mayfield, Inc.
Email: knoble@sbmce.com
(330) 526-2714

Administrative Secretary

DAN EVANS, P.E., CPD, GPD
HEI Engineering Group, Inc.
Email: evans@hei-engineering.com
(330) 262-0042

Corresponding Secretary

JOE DEUCHER, CPD
Stantec
Email: joseph.deucher@stantec.com
(216) 298-0641

Affiliate Liaison

KATHY KIRSCHNICK
Johnson Controls
Email: kkirschnick123@gmail.com
(216) 904-6656

AYP Group Liaison

TY MYGRANTS
DLR Group
Email: tmygrants@dlrgroup.com
(216) 522-1350

WOA Group Liaison

KATHY KIRSCHNICK
Johnson Controls
Email: kkirschnick123@gmail.com
(216) 904-6656

Chapter Ambassador

KEITH BUSH FASPE, CPD, GPD, CSI
Email: kbush@wright-engineering.com
(330) 815-9368

Newsletter Editor

MICHAEL DRAB
Thorson Baker & Associates, Inc.
Email: mdrab@thorsonbaker.com
(330) 659-6688

From the President:



I would like to thank Nick Tabar and Ron Bohnak with RL Deppmann for being our guest speakers at the March Technical Meeting and for also hosting the lunch.

The April Technical Session will be on the topic; Thermal and Hydronic Tanks for Water Applications, presented by Ken Rutherford with Amtrol.

The Wednesday, April 1, 2026, Lunch Meeting will be held at Independence Civic Center located at 6363 Selig Drive, Independence, Ohio 44131.

11:30 – 12:00 Chapter Board Meeting / Sign-In / Meet and Greet

12:00 – 1:00 Lunch during Presentation (White Oak Room)

1:00 – 1:30 Q & A

(ASPE Approved – 1 CEU Credits)

ASPE Cleveland is CASHLESS and now accepts PayPal, Venmo, or Credit Card! The Lunch price is \$20. Your electronic payment will confirm your RSVP! No walk-ins will be permitted. Please click [HERE](#) by Noon on March 30, 2026. Please support your local chapter by attending.

Let us know if there are any specific topics you would like to see our chapter sponsor. We are always looking for new ideas. Remember, without membership and participation there is no local chapter.

Regards,

John A. Varga, P.E.

President, ASPE Cleveland Chapter



**2025 - 2026 ASPE Meeting/Plumbing Class Schedule
April 2026**

<u>Date – Time – Place</u>	<u>Topic</u>	<u>Speaker(s)</u>	<u>Exhibitors</u>
September 10, 2025 – 6:00 PM Cleveland Yachting Club Cost: \$50	Clam Bake Topic – Social Event ASPE Cleveland Chapter	N/A	N/A
October 8, 2025 – 6:00 PM Slyman’s Tavern Independence Cost: \$20	Coated Cast Iron and Chemical Waste Piping	Cameron Baucom - Charlotte Pipe	BWA South
November 12, 2025 – 6:00 PM Slyman’s Tavern Independence Cost: \$20	Tankless Water Heating	Chris Stackhouse Rep Source, LLC	Rep Source, LLC
December 10, 2025 - 4:00–7:00 PM Viega New Facility Cost: Dinner provided by Viega	Press Fittings Technical Session and Factory Tour ASHRAE Akron/Canton Collaboration	Dan Sabetta Technical Manager – Viega LLC	Viega LLC
January 14, 2026 – 6:00 PM Independence Civic Center Cost: \$20	Site Observations – What to look for	Mitchell Clemente, CPD, FASP Sr. Mech Designer Sr. Associate DLR Group	DLR Group
February 10, 2026 – 6:00 PM Independence Civic Center Cost: \$20	Balancing DHW Recirculation Systems	Cody Mack National Training Manager - Caleffi	Campbell Equipment Company
March 11, 2026 – 12:00PM RL Deppmann Lunch provided by RL Deppmann	Domestic Water Booster Pumps Concepts, Start-up, and Troubleshooting	RL Deppmann	RL Deppmann
April 1, 2026 – 12:00 PM Independence Civic Center Cost: \$20	Thermal Expansion	Ken Rutherford	TBD
May 13, 2026 – 6:00 PM Independence Civic Center Dinner provided by Thermaco	Cracking the FOG Code for Success	Seth Markwood Thermaco - Trapzilla	Thermaco

**2025 - 2026 ASPE Meeting/Plumbing Class Schedule
April 2026**

The above is the meeting/plumbing class schedule for the 2024-2025 ASPE year. Updated information will appear in subsequent newsletter issues. All meetings will be at Slyman's Tavern, 6901 Rockside Road, Independence unless otherwise indicated. The meeting/plumbing class, including dinner, is \$20.00 unless noted otherwise. Reservations are required. A mini product show will be held before each meeting/plumbing class highlighting some of the materials discussed in class or products that will assist the engineer in understanding what they are designing or specifying. All plumbing classes will qualify for 0.1CEU hours and will assist in preparation for the ASPE CPD examination.

The following times will be enforced as strictly as possible.
Make your reservations a minimum of two days before the meeting/class and try to be on time.

Evening Seminars:

- Chapter Board Meeting 5:00 - 5:30 pm
- Sign-in / Meet and Greet / Vendor Display 5:00 - 6:00 pm
- Dinner 6:00 - 6:30 pm
- Presentation 6:30 - 7:30 pm
- Q & A / Vendor Product Display 7:30 - 8:00 pm

Lunchtime Seminars:

- Mini Product Show 11:30 - 11:45 am
- Sign-In / Meet and Greet / Vendor Displays 11:45 - 12:00 pm
- Lunch 12:00 - 12:30 pm (Seminar to begin during lunch)
- Presentation 12:00 - 1:00pm
- Q & A / Vendor Display 1:00 - 1:30pm

PROUDLY PROVIDING
THERMOSTATIC BALANCING SOLUTIONS
FOR OVER 10 YEARS



Hot Water Recirculation

In 2012, CircuitSolver® was developed to conquer the challenges inherent to conventional manual balancing valves. As the market's first **thermostatic balancing valves** used for domestic hot water recirculation, CircuitSolver® balances a system based solely on temperature as opposed to pressure or flow to guarantee hot water at **every fixture**. Dynamically balancing a system, CircuitSolver® ultimately **ended complaints** about the lack of hot water, and eliminated balancing processes and callbacks.

Cold Water Recirculation

Last year, we implemented our thermal actuator technology into the CircuitSolver® Union Cold Water balancing valves. These valves are installed in domestic Cold Water recirculation systems to mitigate the risk of Legionella and other bacterial growth. Cold water recirculation is becoming more prominent in hospitals to reduce water stagnation and ensure residual chlorine is distributed but can be beneficial to any commercial building that could experience periods of low flow or non-use.



PINNACLESALES



www.pinnacle reps.com



(800) 253-7010



COLUMBUS OFFICE

4501 SUTPHEN CT
HILLIARD, OH 43026
PHONE - (614) 876-2477
FAX - (614) 876-0238
orders@bwasouth.com

CINCINNATI OFFICE

10869 READING RD
CINCINNATI, OH 45241
PHONE - (513) 733-4771
FAX - (513) 733-4867
orders@bwasouth.com

CLEVELAND OFFICE

6111 CAREY DR UNIT 2 & 3
VALLEY VIEW, OH 44125
PHONE - (330) 655-9220
FAX - (330) 655-9222
noorders@bwasouth.com

WWW.BWASOUTH.COM / QUOTES@BWASOUTH.COM

MANUFACTURERS' REPRESENTATIVES OF THE HIGHEST QUALITY PLUMBING AND SPECIALTY BUILDING PRODUCTS



The new degree of comfort™



MASTROIANNI & ASSOCIATES, INC.

Manufacturers' Representative of Products for the Mechanical Trades Since 1984

HOT WATER PRIMETER HEATING, STEAM, ELECTRIC RADIATORS, TOWEL WARMERS

RUNTAL RADIATORS www.runtalnorthamerica.com

LINK SEALS, PIPE SLEEVES, CASING SPACERS, END SEALS

LINK SEAL , GARLOCK , PSI, THUNDERLINE, GPT www.linkseal.com

BARCO BALL JOINTS, PACKED SLIP JOINTS, BELLOWS EXPANSION JOINTS, VENTURI FLOW METERS, SEISMIC 'V'-LOOPS

HYSpan PRECISION PRODUCTS www.hyspan.com

HEAT EXCHANGERS (SHELL & TUBE), AIR & DIRT SEPARATORS, HYDRAULIC SEPARATORS, AUTOMATIC AIR VENTS, PUMPS, SUCTION DIFFUSERS, TRIPLE DUTY VALVES

THRUSH CO www.thrushco.com

DOMESTIC WATER BOOSTER SYSTEMS, SKID MOUNTED HVAC PACKAGES

TIGERFLOW SYSTEMS www.tigerflow.com

HYDRONIC BALANCING VALVES (AUTOMATIC & MANUAL), "COIL PAKS", HOSE PAKS, BYPASS KITS

NEXUS VALVE www.nexusvalve.com

HUMIDIFIERS (STEAM, ELECTRIC, GAS, DISPERSION MANIFOLDS)

PURE HUMIDIFIER www.purehumidifer.com

EXPANSION TANKS, BUFFER TANKS, AIR SEPARATORS, GLYCOL MAKE-UP SYSTEM

JOHN WOOD CO www.johnwood.com

SUMP PUMPS & OIL MINDER / DETECTION SYSTEMS CONDENSATE / BOILER FEED / VACUUM PUMP PACKAGES

STANCOR PUMPS..... www.stancorpumps.com

FEDERAL PUMPS CO..... www.federalpumps.com

PLATE & FRAME HEAT EXCHANGERS

POLARIS www.polarisphe.com

PUMPS: END SUCTION, IN-LINE, RECIRCULATION

THRUSH PUMP..... www.thrushco.com

CHECK VALVES, STRAINERS, BUTTERFLY VALVES

TITAN / MJELLER..... www.titanfci.com

BONOMI www.bonominorthamerica.com

FLEX CONNECTORS, EXPANSION JOINTS, NESTED LOOPS, PIPE GUIDES

ENGINEERED FLEXIBLE PRODUCTS..... www.general-rubber.com

GENERAL RUBBER CO..... www.engineeredflex.com

VIBRATION ISOLATION - SPRING HANGERS, VIBRATION CURB BASES, INERTIA BASES

VIBRATION ELIMINATOR CO www.veco-ny.com

PRE-INSULATED PIPE SHIELDS

VALUE ENGINEERED PRODUCTS www.valueng.com

THERMOMETERS, PRESSURE GAUGES, P/T PLUGS, GAUGE ACCESSORIES

WEKSLER GLASS THERMOMETER CORP..... www.wekslerglass.com

7601 First Place Drive ~ Ste A- 13 ~ Phone: 440.786.1100 ~ Fax: 440.786.1103

www.mastroiannihvac.com



Paired with Sloan High-Efficiency Flushometers, our Commercial Toilet and Urinal Systems take water efficiency to the next level.

All Sloan Flushometers are made from a high level of recycled material and are 100 percent recyclable.



Sloan Bio-Deck Sinks utilize natural materials such as corn cobs and other renewable domestic agricultural materials.

Dual-Flush Side Mount Retrofit is a fast, easy way to reduce water consumption.



Sloan Hands-Free Faucets promote cleanliness, hygiene and overall health benefits.



Monitoring Systems reduce operating costs and decrease water consumption.

Water Power

To arrange a personal consultation, call us at **800.982.5839**.

Every day around the world, Sloan advanced integrated water management systems provide elegant, efficient and hygienic washroom solutions for any commercial environment.

SLOAN

Water Connects Us™



Sump, sewage & grinder pumps, simplex & duplex pump systems, specialty pumps, battery back-up systems.
www.zoellerpumps.com



Commercial sewage pumps, non-clog pumps up to 60 hp, grinder pump systems, progressive cavity pumps.
www.zoellerengineered.com



Fiberglass & polyethylene basins, pre-fabricated lift stations.
www.toppindustries.com



SCHIER

Great Basin grease interceptors and sampling ports.
www.schierproducts.com



Oil separators, Solids interceptors, Chemical waste tanks.
www.striemco.com

V Systems & Controls, Inc.

Domestic water booster package systems for commercial, industrial & municipal applications.
www.vcsystems.net



Precision Plumbing Products

Trap Primers and Water Hammer Arrestors
Manufacturer
www.pppinc.net



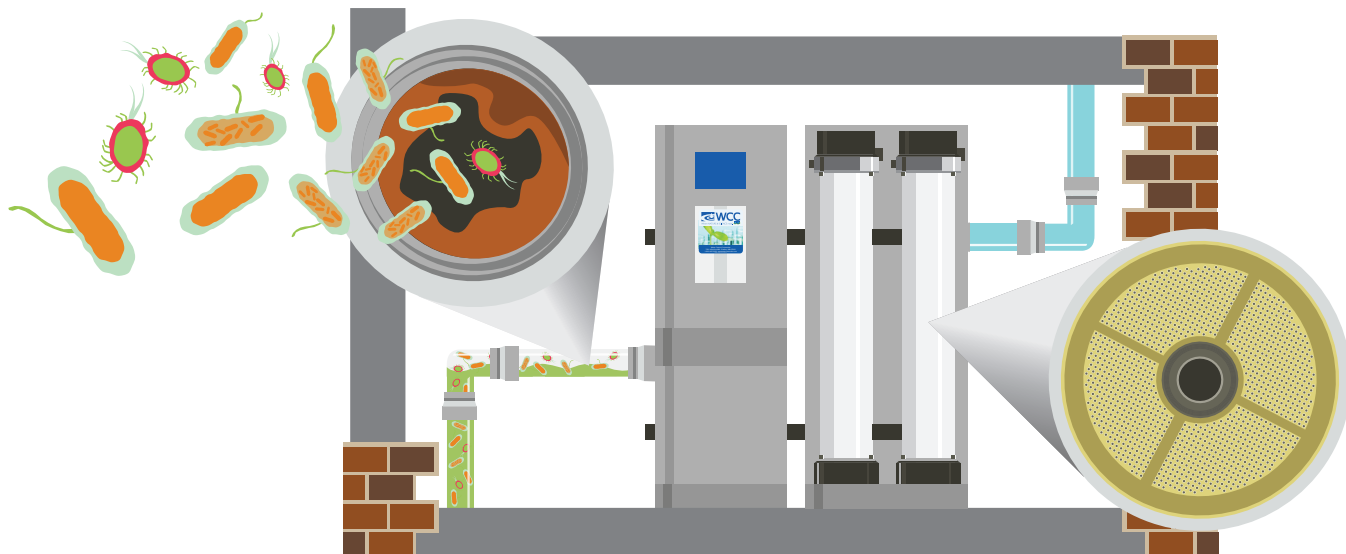
Manufacturers Representatives Serving Plumbing, Mechanical, Electrical, Architectural and Water Treatment Industries. Representing the following product lines:

Ohio Market

A Better Idea/Quick Block/EZ Sleeper www.pipeease.com	<i>E-Z Sleeper / Quick Block / Pipe Ease</i> – Rooftop pipe and equipment support blocks and deck flanges.
AB&I Foundry www.abifoundry.com	No-Hub and Hub and Spigot Cast Iron Soil Pipe and Fittings
American Standard www.americanstandard-us.com	Founded in 1875, American Standard has been the award-winning leader in Residential and Commercial Toilets, Sinks, Faucets, Showers, Flush Valves, Bidet Seats, Bathtubs and Walk-in Tubs.
Anaco-Husky www.anaco-husky.com	American made complete line of heavy-duty <i>Husky</i> high performance and standard no-hub couplings, <i>Cremco</i> specialty transitional couplings and service weight gaskets.
Apollo Valves Backflow www.apollovalves.com	<i>Apollo Valves</i> backflow prevention products for plumbing, fire protection, waterworks and irrigation.
Atlas Filtri https://us.atlasfiltri.com	Water filtration solutions including: Filter Housings, Cartridges, Whole House and Tankless Water Heater Complete Kits, Hydra Self-Cleaning, Reverse Osmosis and <i>ScaleArmor</i> Polyphosphate.
Bradley www.bradleycorp.com	<i>Washbar</i> all in one hand washing, wash fountains, lavatory systems, <i>Navigator</i> thermostatic mixing valves, showers, safety equipment, <i>Verge</i> faucets and <i>Evero</i> natural quartz, safety/skid water heaters.
Elkhart Products www.elkhartproducts.com	<i>Elkhart Products</i> wrought copper tube fittings, cast fittings and EPC engineered push-fit fitting brands include <i>TECTITE</i> and <i>CopperLOC</i> .
DXV www.dvx.com	Luxury Bath and Kitchen products covering the last fifteen decades to include design elements from Classic, Golden, Modern and Contemporary periods.
Franke www.franke.com/us/en/water-solutions/products.html www.franke.com/us/en/home-solutions.html	Commercial, Institutional, Healthcare, Scullery, Utility, Vanity and Handwash stainless steel sinks, faucets and accessories. Residential and Luxury <i>Mythos</i> and <i>Maris</i> stainless steel, granite, fireclay, work center and farmhouse kitchen sinks, faucets and specialty products.
Grohe www.grohe.us	Leading global brand of Faucets, Showers, Tub Faucets, Toilets, Sinks, Bathroom Accessories, Smart Home <i>Sense and Sense Guard</i> products and Kitchen Faucets, Water Systems and Accessories.
Kemper Water Control www.kemperwatercontrol.com	Engineered <i>Flow Splitter</i> and <i>Balancing Valve</i> system technology for domestic water and Legionella mitigation solutions.
Liberty Pumps www.libertypumps.com	Sump, drain and condensate, utility, transfer, effluent and sewage pumps, <i>Omnivore</i> and <i>ProVore</i> grinders, <i>Accent II</i> macerating toilet system and engineered pump system packages.
Marlo www.marlo-inc.com	Commercial & industrial water softeners, media filters, reverse osmosis, dealkalizers, deionized and EDI electro-deionized water treatment equipment.
Plumberex www.plumberex.com	<i>Pro-Extreme, Trap Gear, Handy Shield Maxx and Clear Shield</i> lavatory trap and riser insulation kits. <i>Mushroom Flange and Floor Sink Carrier</i> specialty products.
Raychem / Chemelex www.chemelex.com	<i>HWAT</i> self-regulating heating cable system for domestic hot water, <i>XL-Trace, Gardian</i> and <i>WinterGard</i> freeze protection cable, <i>Pyrotenax MI</i> and <i>Electromelt</i> snow and anti-icing cable, <i>IceStop, RIM</i> and <i>FrostGuard</i> roof and gutter de-icing cable, <i>RaySol, NuHeat</i> floor warming and freezer frost heave cable.
Schott Scientific Glass / Kimax www.us.schott.com/en-us	Glass piping for acid waste and containment piping systems. <i>Knight-Ware</i> acid neutralizing sumps.
Stiebel Eltron www.stiebel-eltron-usa.com	Electric tankless/instantaneous/mini tank water heaters for commercial, residential and industrial applications, emergency shower eyewash heaters, <i>Accelera</i> E heat pump water heaters, hot water tanks for solar, geothermal, and hydronic, instant hot water dispensers, electric fan heaters and hand dryers.
Tight Seal Gasket www.tightsealgasket.com	Toilet & urinal setting with Innovative, flexible design, sticky, reusable, elastomer toilet & urinal gaskets. Compresses up to 50%. Will not break or become brittle. Allows movement without leaking.
WCC - Water Control Corporation www.watercontrolinc.com	High-Capacity Ultra-Filtration for Legionella & Pathogen control, rainwater reclamation systems with ultraviolet or ozone purification, high purity water systems, water softeners, water filters.
Wavin/Orbia https://wavin.us	Smart water management solutions, water reuse systems, PVC, CPVC and PEX plastic pipes and fittings for plumbing, waste and sewer systems, roof drainage, stormwater management, and underfloor heating.
Xerxes www.xerxes.com	Fiberglass Wastewater storage solutions. Grease, oil, solids interceptors, and double wall decontamination tanks.
Additional Products Distributed: www.repsourcellc.com	Bathroom Partitions (solid plastic, baked enamel, stainless steel, laminate and phenolic), Bathroom Accessories, Lockers (solid plastic and metal), Specialty Water Treatment solutions.

LEGIONELLA:

Don't Manage the Symptoms. Control the Cause!



We remove Legionella & pathogens *before* they enter your plumbing and mechanical system.

HIGH-CAPACITY ULTRAFILTRATION

Point-of-Entry • Point-of-Use • Hot Water Recirc Treatment



Where NATURE & SCIENCE meet.™ 

- 99.999% removal of Legionella and pathogens (3rd party-verified)
- A firewall for the entire building
- Drastic reductions in nutrients and biofilms
- 500 GPM+, minimal pressure loss
- Self-cleaning, long-lasting, low maintenance
- Automatic membrane integrity verification (Meets strict EPA guidelines)



PROTECT YOUR FACILITY AND LEARN MORE AT WATERCONTROLINC.COM

VIEGA VALVES

**MORE SIZES.
MORE MATERIALS.**

The leader in pressing just got bigger. That means all Viega connections on your upcoming jobs. Who doesn't like the sound of that?

Dan Sabetta
Technical Manager – Great Lakes Region



**SCAN
WITH PHONE
TO CONTACT**



viega



T&S has your **plumbing** solutions.

Discover the lasting reliability of T&S. From hose reels to sensor faucets, lab equipment to high-end fixtures, T&S offers all the plumbing products you need, with reliability built in. Contact your representative today to learn how T&S can outfit any facility, or visit tsbrass.com.



T&S plumbing products represented in Cleveland by: Midwest Spec., LLC • 513-353-9191

(440)-944-7500

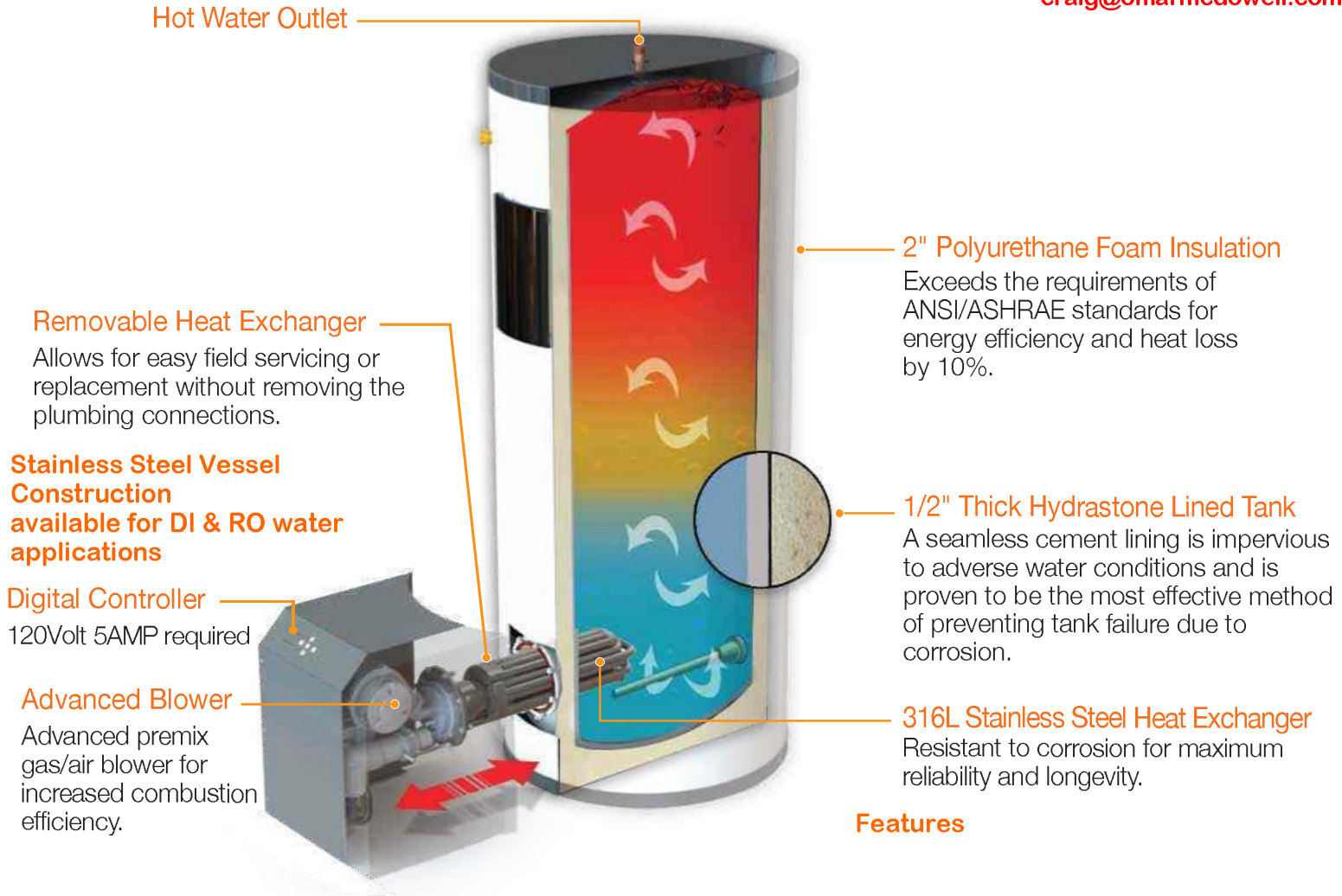
clesales@mwspec.com

29315 Clayton Ave.
Wickliffe, Ohio 44092

www.mwspec.com

Hubbell Prime Gas Water Heater

Represented By:
Omar McDowell Co.
 (440) 808-2280
craig@omarmcdowell.com



Features

Other Heat Exchangers

VS. ...The Prime Advantage

Permanently welded to outer vessel

- ▶ Not removable
- ▶ Not serviceable
- ▶ Heat exchanger failure requires water heater replacement
- ▶ Not repairable
- ▶ Cleaning difficult, time consuming and costly
- ▶ Significant welded surface area increases the probability of failure

Modular Construction

- ▶ Fully removable heat exchanger
- ▶ Easily serviced in the field
- ▶ Heat exchanger can be replaced without water heater removal or replacement
- ▶ Repairable
- ▶ Cleaning is quick and easy
- ▶ Minimal welded area reduces the probability of failure

Approved
 Approved

PRIME Heat Exchanger Top view



Advance Thermal Corp.

Removable Insulation & Acoustic Covers

Aerco

 Commercial Condensing Boilers
 Commercial Condensing Water Heaters
 Indirect & Semi-instantaneous Heaters

Bell & Gossett

Balance Valves

Automatic Flow Limiting
Manual Flow Limiting
Pressure Independent Control

 Hydronic Specialties
 Expansion/Compression Tanks
 Centrifugal Pumps

Base Mounted
Close Coupled
Double Suction
Horizontal Split Case
In-Line
Multi-Stage

Heat Exchangers

Shell & Tube
Plate Heat Exchangers
Replacement Tube Bundles

 Heat Transfer Packages
 Pressure Booster Systems
 Submersible Pumps
 Variable Speed Systems
 Vertical Turbine Pumps

Bobco

Differential Gauge Kits

Bock Water Heater

 Gas Fired Water Heater
 Electric Water Heater
 Oil Water Heater
 Indirect Water Heater
 Solar / Geo Thermal Water Heater
 Electric Point of Use Water Heater

BoilerMag

 Magnetic Filters
 Basic System Chemical Solutions

Cemline Corp.

 ASME Tanks
 Boiler Blowdown Separators
 Condensate Coolers
 Hot Water Storage Heaters
 Packaged Water Heaters
 Replacement Tube Bundles Stone
 Steel Lined Tanks
 Unfired Steam Generators

Danfoss
Greater Toledo Area

 Variable Frequency Drives Motor
 Soft Starters

Domestic Pump

 Boiler Feed Systems
 Condensate Return Pumps
 Pressure Powered Pumps
 Vacuum Pumps

Dow Heat Transfer Fluids

 DOWTHERM™ SR-1 Ethylene Glycol
 DOWFROST™ HD Propylene Glycol

Dri-Steam
Greater Toledo Area

 Steam Injection Humidifiers
 Gas To Steam Humidifiers
 Steam To Steam Humidifiers
 Electric Steam Humidifiers
 Evaporative Humidifiers
 Ultrasonic Fog Humidifiers

Duravent
Northern & Central Ohio

High Performance Chimneys & Vents

Goulds / G&L Commercial

 End Suction Pumps
 Vertical Multi-stage
 Pressure Booster Systems
 Vortex Waste Water

Griswold Controls

 Automatic Balance Valves
 Manual Balance Valves
 Pressure Independent Control
 Valves Coil Hook-up Kits

General Water Systems

 Chemical Free Water Treatment
 Centrifugal Separators

Hoffman Specialties

 Steam Traps & Specialties
 Condensate Return Pumps
 Pressure Regulating Valves

Kadant Johnson

Pressure Powered Pumps

McDonnell & Miller

 Boiler Safety Controls
 Level Controls
 Flow Switches

Metraflex Company

 Flexible Pump Connectors
 Expansion Joints & Guides
 Non-slam Check Valves
 Ball & Butterfly Valves

Miljoco

 Pressure Gauges
 Thermometers
 Accessories

Niles Steel Tank
Greater Toledo Area

Glass Lined & Steel Storage Tanks

NTI

 Residential/Commercial Condensing Boilers
 Residential/Commercial Condensing Water Heaters

Peterson Equipment Co.

Pressure / Temperature Test Plugs


ProPak Solutions

 Hot Water/Chilled Water Pump Skid Package
 Heat Transfer Skid Package
 Steam & Hydronic Boiler Skid Package
 Air Cooled Chiller Skid Package
 Water Heater Skid Package
 Snowmelt Skid Package
 Domestic Pressure Booster Package

PVI
Northern & Central Ohio

 Gas Fired Water Heaters
 Steam Fired Water Heaters
 Multiple Energy Water Heaters
 Oil & Oil/Gas Water Heaters
 Storage Tanks
 Water Quality
 Digital Mixing Valves

Rovanco

 Pre-insulated Pipe
 Containment Pipe

Tower Tech Cooling Towers

 High Efficiency Cooling Towers
 HVAC Cooling Towers
 Process Cooling Towers
 Power Generation Cooling Towers

Vertiflo

 Pedestal Mount – Sump Pumps
 Base Mounted Pumps
 Vertical Pumps

Webster Engineering
Greater Toledo Area

 Single & Dual Fuel Burners
 Landfill Gas Burners
 High Turndown Burners
 Temp-A-Trim: Air Density Control System

Wessels Company

 ASME & Glass Lined Storage Tanks Glycol Fill Systems
 Engineered Tanks

Replacing Your Water Heater Every Few Years is Not Our Business Plan



Conquest[®] condensing, gas-fired water heaters are constructed from AquaPLEX[®] duplex stainless steel so they're corrosion-resistant in potable water at any temperature. Available in 199-1000 MBH, Conquest provides even more BTUs in small spaces and fits through a standard 36-inch doorway. With a thermal efficiency of up to 96%, long product life and a 15-year tank and heat exchanger warranty, you can't afford not to have one.

Call R.L. Deppmann or visit our Monday Morning Minutes blog at deppmann.com for information on PVI Water Heaters

800.589.6120



800.784.8326 | pvi.com

A close-up photograph of a hand operating a brass valve handle on a pipe. The hand is positioned on the left side of the frame, gripping a silver metal handle with two finger loops. The valve is made of brass and is attached to a copper pipe. The background is dark and out of focus.

NIBCO[®]
presssystem[®]

FIND YOUR FIT

**Choose from Over
600 Press Valve SKUs,
the Largest Offering
in the Industry**

- Options ranging from ½" – 4"
- Select from over 65 different valve configurations
- Our total system – valves, fittings and tools – comes with unparalleled service
- Experience the best customer service in the industry – as judged by our customers

**FIND YOUR FIT AT
NIBCO.COM/PRESS**

Amanda Miller | Area Sales Manager
614.634.2516 | millera2@nibco.com

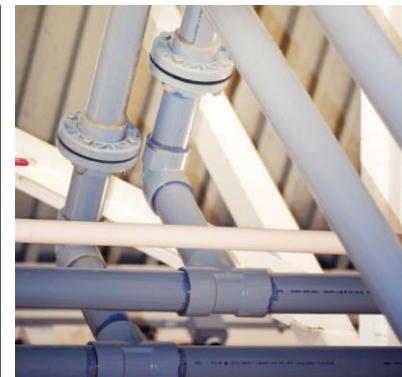
Paul Figuly | Assistant Regional Manager
216-402-7056 | figulyp@nibco.com

Aaron Kilburg | Commercial Sales Manager
331-262-0868 | kilburga@nibco.com

Spec with Confidence



PRECISELY ENGINEERED. REAL-WORLDTESTED.



Corzan® Material and Piping Solutions offer a complete tie-in to tap solution made up of Schedule 80 pipe & fittings, flanges, valves, and specialty adapter fittings including: MIP Threads x CPVC, FIP Threads x CPVC, Stub Out Elbows, and Male Sweat Adapters. Potable water systems designed with Corzan CPVC offer the best solution for reducing biofilm buildup and the growth of Legionella while being immune to degradation caused by standard disinfection procedures.

Performance Ratings

- Plenum rated for water distribution piping (ASTM E84-23)
- Conforms to NSF International Standards 61 and 14
- Withstands ANSI/ASHRAE Guideline 188 water treatment protocols
- Innately resistant to corrosion, pitting and scaling
- Resists biofilm that can lead to waterborne illness
- Pressure rated for temperatures up to 200°F

Diverse Applications

- Academic Buildings
- Multi-Family Housing
- Hotels
- Hospitals
- Data Centers
- Power Generation
- Wastewater Treatment Plants
- Chemical Processing Facilities



Thomas Deberson - tdeberson@medpipe.com - 614-353-8594 - www.medpipe.com

MEDPIPE

QUALITY PRODUCTS & SERVICES

PROFESSIONAL & EXPERIENCED STAFF

MULTIPLE LOCATIONS & ABUNDANT RESOURCES

ALL OF YOUR MEDICAL GAS PRODUCTS & SERVICES UNDER ONE ROOF

Medical Gas System Equipment Sales, Inspection, Service & Repair

CHARLOTTE
PIPE AND FOUNDRY COMPANY

**NOW OFFERING
EDGE HP IRON™**

SPECIALLY COATED CAST IRON FOR AGGRESSIVE DWV APPLICATIONS.

visit www.charlottepipe.com

C. TODD GREEN
Field Technical Representative
501-352-6670 todd.green@charlottepipe.com

Trombold

Equipment Company

our website: www.trombold.com

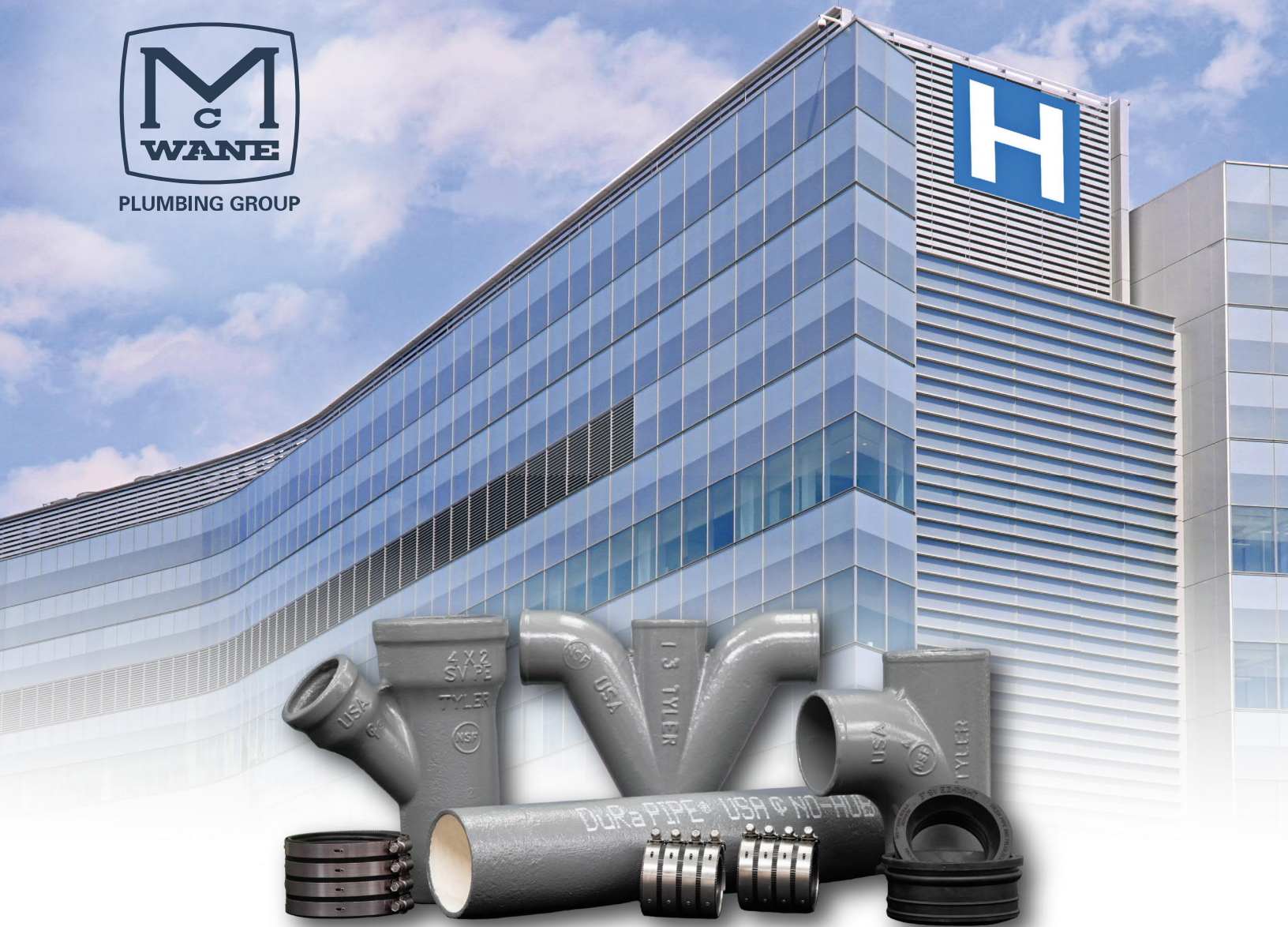
If you need to move water call us we can help!

*Storm and sewage—Weil
Domestic boosters - Delta P Carver
Fire—Patterson*

Phone 216-663-8700 Fax 216-663-8702



PLUMBING GROUP



Superior Performance & System Reliability

DuRa Pipe™ enhanced epoxy coating applied to cast iron soil pipe and fittings. It is well suited for aggressive DWV applications where greater performance is required.



ABIFoundry.com



Anaco-Husky.com



PIPE & COUPLING

TylerPipe.com



Premier manufacturer of plumbing valves including PRV's, control valves, backflow preventers, butterfly valves, hydronic heating valves, quick-connect fittings, water pex, drainage, & pure water filtration.



Products for the fire protection, irrigation, and waterworks markets. Backflow preventers, control valves, in-building risers, pre-assembled valve station products.



Manufacturers of stainless steel drainage systems. Product ranges from standardized products to customized drains.



Plumbing flange design & manufacturing, wholesale distribution and installation services to the plumbing and mechanical piping Industry.



The world's leading provider of power tools, hand tools, and jobsite equipment.



The world's leading provider of flexible stainless steel connectors for natural/LP gas and fluid conveyance applications.



Manufacturers of eyewash and drench shower systems for commercial, hospital, and industrial uses.



An industry leader in manufacturing backflow prevention assemblies.



Manufacturer of oil/water separator, wastewater treatment systems products.



Offers plumbing hangers, straps, fasteners and other solutions for installation of plumbing products and pipe.



Enclosures for backflow preventers for outdoor installations.



Utility control system to promote safety for the student as well as the instructor in the science laboratory learning environment.



Leading manufacturer of plumbing tools and equipment.



MAPA Products has been a driving force in the manufacturing of rooftop supports.



Mueller Steam Specialty is the world's largest supplier of strainers and the number one provider of specialty products serving the valve industry.



Worldwide leader of bottled and pressure water coolers, providing point-of-use filtration equipment, drinking fountains, dehumidifiers and water pitcher systems.



Acid waste & high purity pipe and fitting systems.



Manufacturers of thermostatic mixing valves for building, point-of-use and emergency equipment, tub/shower systems with pressure balancing, thermostatic, or combination shower controls.



Leader in complete control solutions for radiant floor and baseboard heating systems, multi-stage boiler plants, and automatic snow melting systems.



Since 1950, Wal-Rich has been servicing the Plumbing Wholesaler with the finest in plumbing, heating, industrial and hardware specialties.



Flexible corrugated piping systems for natural gas and propane, as well as iron fittings. Applications include single & multiple-family residential as well as industrial and commercial buildings.

IntelliStation™:

The smarter way
to deliver tempered water



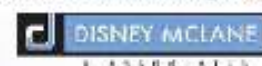
The Intelligent Water Mixing and Recirculation System

The IntelliStation™ provides unmatched levels of control over hot water delivery in commercial and institutional buildings.

- Precise digital control to $\pm 2^{\circ}\text{F}$
- Smart, easy-to-use controller with color touchscreen
- BAS integration
- Access to rich system data
- Integrated pump control for reliable, consistent temperatures
- Easy commissioning, repair, and management
- Sanitization mode allows for high temperature system purges
- Compliant with lead free legislation requirements

Learn about the smarter water mixing solution at
PowersControls.com/IntelliStation

POWERS™
A Watts Water Technologies Company



ESTABLISHED 1988

UNEQUALED QUALITY.

WOODFORD ROOF HYDRANTS: RELIABLE ROOFTOP WATER.

- Heavy-duty cast iron mounting system can be installed by roofer; hydrant can be installed later.
- RHY2-MS freezeless hydrants automatically drain when shut off, even with hose attached.
- Easy to repair from top of unit without removing hydrant.
- Five-year limited warranty.

RHY2-MS
Woodford roof hydrant plumbs directly to drain

Woodford SRH
sanitary hydrant: no drain required!



WOODFORD MODEL 68 FREEZELESS UNDERCOVER WALL HYDRANT



- Model 68 freezeless wall hydrant protected by an integral locking cover
- Drains automatically—even with hose attached
- Replaceable locking stainless steel cover flips down for easy access
- Sleek, streamlined design
- Easier to install than recessed box hydrants



Service • Support • Supply

Manufacturer's Representatives

7860 North Central Drive Lewis Center, OH 43035
740-549-1516 740-548-0985 (Fax)

WOODFORD



**WOODFORD
MANUFACTURING COMPANY**
Excellence. *Always.*

800.621.6032 • www.woodfordmfg.com

CURNAYN
SALES  INC.

PLUMBING HEATING SALES

Manufacturers Represented



HIGHLY-TRAINED PLUMBERS

The Cleveland Plumbing Industry actively promotes the most rigorous and effective standards for our local contractors in the plumbing and mechanical industry.



We can embrace these high standards because our plumbing technicians receive the finest and most comprehensive training in the world - allowing our Northeast Ohio contractors to deliver the finest products, service and installation in only the safest of environments.



Working For Our Members:

- Plumbing Codes
- Medical Gas Training
- Back Flow Prevention
- Safety Services
- Labor Relations
- Education & Training
- Promotion
- Government Affairs

 **CLEVELAND
PLUMBING**
I N D U S T R Y

TOLL FREE: 855-CPI-4ALL (855-274-4255)

CLEVELANDPLUMBINGINDUSTRY.COM

Why Join ASPE


When you join ASPE, you become part of a worldwide family of engineering and design professionals and gain immediate access to their combined technical knowledge and industry support.

-  Professional Growth & Development
-  Networking
-  Industry Publications
-  Industry Events
-  Scholarship Program


[Join ASPE Today](#)

Get Involved


Chapters
ASPE has more than 7,400 members.
Find your local ASPE Chapter.



AYP
Establish contacts and share experiences.



WOA
Engaging, retaining and advancing women in the industry.



RC FREY & ASSOCIATES
MANUFACTURERS' REPRESENTATIVE

REPRESENTING THE FINEST IN
COMMERCIAL PLUMBING FOR MORE
THAN 50 YEARS

330-425-2555 — WWW.RCFREY.COM





THE MIFAB ADVANTAGE

IN STOCK AND READY TO SHIP!

 PINNACLE SALES
Phone: 800-253-7010
Email: sales@pinnacle-reps.com
WWW.PINNACLEREPS.COM



QUICK HUB COUPLINGS:
NO NEED TO SEPARATE THE GASKET FROM THE SHIELD - INSTALLATION READY. JUST PUSH ON THE PIPE!



GRP TRENCH:
RIGID LIKE POLYMER CONCRETE BUT NOT FRAGILE. COMPETITORS MAXIMUM TEMPERATURE AT 140°F. OUR MAXIMUM TEMPERATURE AT 212°F!



TOP SET STRAINERS:
BRING THE STRAINER TO GRADE WITHOUT REMOVING THE GRATE AFTER THE CONCRETE POUR. JUST TURN THE THREE PHILLIPS HEAD SCREWS!



RPZ AND DC BACKFLOW:
ACCESS BOTH CHECKS FROM ONE ACCESS POINT. ALL STAINLESS STEEL BODY AND SHORTEST LAY LENGTH!



SIPHONIC DRAINAGE:
PIPES ARE FLUSHED AT HIGH VELOCITY AND SELF-CLEAN AS AIR EXITS THE SYSTEM. PIPE DIAMETER & MATERIALS ARE REDUCED BY HALF!



HDPE INTERCEPTORS:
LIFETIME WARRANTY. GENERIC CUT TO FIT ADS RISERS. PDI AND ASME APPROVED!

WWW.MIFAB.COM

ASPE **24** Chapter
Award of Merit
2023 – 2024 Recipient

** Local Chapters are not authorized to speak for the Society