



*Cleveland Chapter of The American Society of Plumbing Engineers*

*July 2010*

CHAPTER OFFICERS

*President*

KEITH BUSH, CPD, CSI  
Kent State University  
Email: kdbush@kent.edu  
(330) 672-9612  
(330) 672-2648 (fax)

*V.P. Technical*

JOHN VARGA  
Scheeser Buckley Mayfield, Inc.  
Email: jvarga@sbmce.com  
(330) 896-4664  
(330) 896-9180 (fax)

*V.P. Legislative*

DAN EVANS, CPD, LEED AP  
Hinkel Engineering  
Email: evans@hei-ohio.com  
(330) 262-0042  
(330) 262-0392 (fax)

*V.P. Membership*

GREG TROMBOLD  
Trombold Equipment Company  
Email: gtrombold@hotmail.com  
(216) 663-8700  
(216) 663-8702 (fax)

*Treasurer*

KEVIN NOBLE, P.E., LEED AP  
Scheeser Buckley Mayfield, Inc.  
Email: knoble@sbmce.com  
(330) 896-4664 ext. 114  
(330) 896-9180 (fax)

*Administrative Secretary*

TIM HOLLO  
Victaulic  
Email: thollo@victaulic.com  
(440) 241-6944  
(610) 923-3358 (fax)

*Corresponding Secretary*

CRAIG McDOWELL  
Omar McDowell Company  
Email: craig@omarmcdowell.com  
(440) 808-2280  
(440) 808-2266 (fax)

*Affiliate Liaison*

JOHN GRIFFIN  
Libb Company  
Email: jegriffin1@juno.com  
(330) 297-0757  
(330) 297-0157 (fax)

*Newsletter Editor*

MICHAEL DRAB  
Thorson Baker & Associates, Inc.  
Email: mdrab@thorsonbaker.com  
(330) 659-6688  
(330) 659-6675 (fax)

**From the President:**



I wanted to thank the board and members for nominating me as your President. I look forward to performing this service once again and look forward to a great program that we are putting together for our membership and friends. I also want to thank Mike Drab for doing a great job as past president and I wish him the best, not that he won't be involved since he still has accepted to continue being our newsletter editor, in which I am very thankful.

To give you some updates on the national level, Mike Drab and I just completed the presidents meeting in Pittsburgh. The Pittsburgh Chapter was a great host and sponsored us with a great meal at one of Pittsburgh's great Italian restaurants, Buca di Beppo located in Station Square. It was quite a feast and if you like large meatballs then this is the place to go. This event was very informative as our regional director filled us in on the state of the ASPE organization. I am sorry to inform our members that the national organization is still continuing to have financial issues during these poor economic times. Rebate Dues, loss of members and past debt is still holding the national organization back. During this time the ASPE board wants help from each chapter in passing the word along that when your dues come due that your payment be sent on time. By doing this ASPE hopes the organization will not run into cash flow problems. The ASPE board is also working on getting a new executive director with the retirement of our current director. The Cleveland Chapter wishes Stan the best and I hope he enjoys his retirement. During our presidents meeting new by-laws were reviewed and voted on. I am asking our news letter editor to list the issues in our August Newsletter, along with the preliminary vote outcome from the chapters in our region. These issues will be voted on by all of the delegates at the national convention in Philadelphia this fall and I look forward to seeing many members from Cleveland.

Now for our upcoming year's program. The board and I want to present more technical topics this year by following national on presenting a more Green educational program. I would like to review the latest concepts in Solar Thermal Heating Systems which incorporate domestic hot water, Green Roof designs and products, storm water management designs and BMP, shower drain energy recovery systems and others TBA. Your feedback on what programs you would like to have would be most helpful. Please make your recommendations to John Varga, VP of Technical. I would also like to propose several meetings with some of our plumbing contractor's in a open forum type of meeting to get their take on the installation issues associated with the new green designs and LEED processes. I hope these topics interest you since these design methods are being required of our industry in a need to reduce water and energy.

It is now July and I hope all of our members are having a great summer and are looking forward to our clam bake in the fall along with our ASPE golf classic. Please take a look at our golf insert for further details and how you can get involved. I am sorry that I was not able to attend the baseball outing but from what I have been told all parties had a great time and maybe we can arrange for this event again.

In closing, I look forward to seeing you in the fall. Have a great summer.

Sincerely,

Keith Bush  
President

**ASPE Cleveland Chapter**  
**2010 Golf Outing Sign up Form**

**ASSE Northern Ohio Chapter**  
**Location: Fowlers Mill golf course Date: 8-5-10**

# ASPE/ASSE Golf Outing



This years golf outing will be held at Fowlers Mill Golf Club, which is located at 13095 Rockhaven Road, Chesterland Ohio.

The cost per golfer is \$115.00. Dinner only will be \$40.00. The cost per golfer after deadline will be \$125.00 each

**Sign up on the enclosed form and return no later 7-6-10**

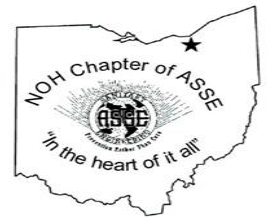
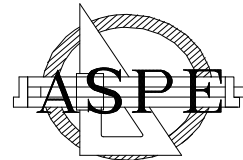
Hole sponsorship is \$130.00 per hole. We will also have event and lunch sponsors if you are interested contact me.

Mark **August 5th** on your calendar now. Arrive at the course by 10:30 am Shot Gun Start at 12:00 noon

Contact person: 216-663-8700 Greg Trombold

### Highlights

- ◆ 50/50 raffle
- ◆ Lunch and dinner provided
- ◆ Over \$1,000.00 in door prizes
- On course beverages



### ASPE Cleveland Chapter

Mail to: ASPE/ASSE  
 4892 Johnston Pkwy  
 Cleveland, OH 44128

Phone: 216-663-8700  
 Fax: 216-663-8702  
 Email: gtrombold@hotmail.com

List your foursomes below

1st foursome

\_\_\_\_\_  
 \_\_\_\_\_

2nd foursome

\_\_\_\_\_  
 \_\_\_\_\_

### Entry Form

Company Name

\_\_\_\_\_

Name

\_\_\_\_\_

Address

\_\_\_\_\_

\_\_\_\_\_

Fax Number

\_\_\_\_\_

Phone

\_\_\_\_\_

**ASPE ASSE 2010 golf outing**  
**August 5<sup>th</sup> Fowlers Mill golf club**

**SPONSORSHIP FORM**

- The cost for hole sponsorship is \$120.00 per hole. If you have two manufactures that would like to sponsor a hole make a copy of the form and send in both copies. Please call Greg Trombold if you have any questions (216) 663-8700.

1. Company Name \_\_\_\_\_
2. Phone # \_\_\_\_\_
3. Contact Name \_\_\_\_\_

**WORDING FOR SIGN (40 LETTER LIMIT)**

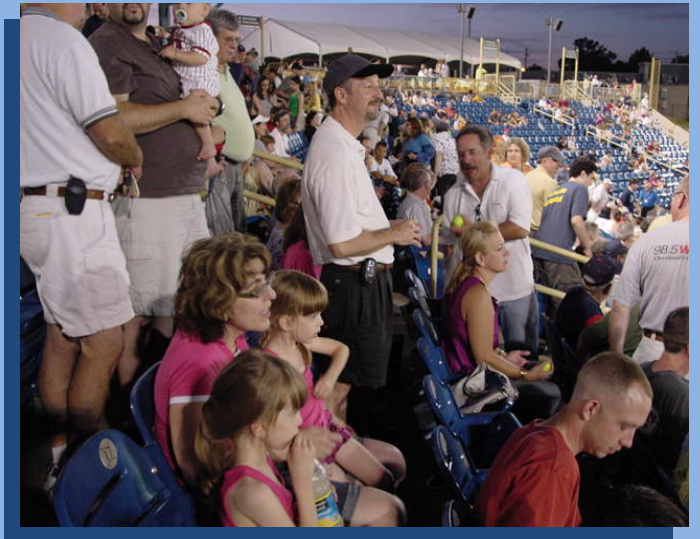
---

- The hole in one sponsorship is also available. The company that contacts me first to take advantage of this will receive the following. Mention in the ASPE newsletter, a banner at the club with their name on it, and recognition at the dinner for their support. The cost for this is \$550.00
- Lunch sponsorship is also available cost \$350.00 with the same recognition as above, however the sign will be on the putting green with the companies listed that provide lunch sponsorship. I will only be accepting the first three companies that contact me on this.

Please send your check to Trombold Equipment, 4892 Johnston parkway, Cleveland, OH 44128. Deadline for registering for the golf outing or hole sponsorship is July 8<sup>th</sup>.



Is that the Drab Family?



Laurie Clemente won 2 tickets to a future game!



Picture perfect weather for a Ball Game!

Thanks to all that attended. We hope you had a great time!

Captains Win 6-2!!!



Celebrating yet another Victory!



Great Post Game Firework Display!



2900 Newpark Dr., Barberton, OH 44203

An EMCOR Company

# WITNESS

## A Live Mock Dorm Room Fire! At 1:00 p.m.

### SAVE THE DATE!

**Second Annual  
S.A. Comunale  
Open House**  
**Friday, July 23, 2010**  
**11:00 a.m.—7:00 p.m.**

*A day of Life, Building &  
Commodity awareness*

*Special thanks to the  
Norton Fire Department*



**For more information  
or to RSVP:**

**Call: 1-800-776-7181 ext. 364**

**or**

**Email: [Lisa.Riedinger@comunale.com](mailto:Lisa.Riedinger@comunale.com)**

Atlantic City • Cincinnati • Cleveland • Columbus • Detroit • Fremont, OH • Norton, OH

**The Complete Package:**  
**One Building + One Bundle of Services + One Company**  
**= Your Satisfaction & Peace of Mind!**

### Our Complete Package

- Fire Sprinkler Systems
- Fire Extinguishers & Special Hazards
- Fire Alarms & Detection
- Systems Service & Inspections
- Commercial & Industrial HVAC
- Commercial & Industrial Plumbing
- Mechanical Systems
- Underground Services



### Live Demos & Programs

- Tours of our Facilities, including our 88,000 square foot Fabrication Shop

**FREE Food &  
Refreshments Served  
Throughout the Day**

**[www.comunale.com](http://www.comunale.com)**

**Stop by and learn more about  
what our Complete Package  
can do for you!**

**RSVP today to be entered into a  
special prize drawing!\***

\*RSVP not required to attend event

Marion, OH • Philadelphia • Phillipsburg, NJ • Reading, PA • Youngstown, OH • Washington, DC

# There is More Than One Good Reason to Spec T&S.



**RELIABILITY BUILT IN™**  
www.tsbrass.com • 1-800-476-4103

West / East Coast Warehouses  
Outstanding Customer Service  
Family Owned and Operated

**24 Hour Quick Ship** — Say goodbye to downtime.  
Interchangeability  
Quality and Innovation  
Custom Engineering  
Rigorous Testing  
Codes and Compliances  
Extensive Product Line

**Call in your order before noon for same-day processing and fast turnaround.**



T&S plumbing products represented in Cleveland by:  
Midwest Spec - 800-298-0401

- Plumbing Codes
- Medical Gas Training
- Back Flow Prevention
- Safety Services



- Labor Relations
- Education and Training
- Promotion
- Government Affairs

*We're on The Job for You*

For a list of union plumbing contractors, contact:

**CLEVELAND PLUMBING INDUSTRY PROMOTION AND EDUCATION FUND**

Phone: 216.459.0770

Fax: 216.459.1342

Email: [twanner@mapic.org](mailto:twanner@mapic.org)

Web Page: [www.mapic.org](http://www.mapic.org)

# R.L. Deppmann Company

Southfield - Grand Rapids - Saginaw - Northern Ohio



## NORTHERN OHIO

6910 Treeline Drive Suite A  
Brecksville, OH 44141  
PHONE (440) 526-2439  
FAX (440) 526-6454  
www.deppmann.com

### AC TECHNOLOGY CORP.

*Variable Frequency Drives*

### ADVANCE THERMAL

*Removable Insulation Covers*

### AERCO

*Condensing Boilers & Water Heaters  
Indirect & Semi-Instantaneous Heaters  
Clean Steam Generators*

### BELL & GOSSETT

*Automatic Flow Balance Valves  
Centrifugal Pumps  
Base Mounted  
Close Coupled  
Double Suction  
Horizontal Split Case  
In-Line  
Multi-Stage  
Submersible Pumps  
Vertical Turbine Pumps  
Domestic Water Heating Systems  
Heat Exchangers  
Plate Heat Exchangers  
Replacement Tube Bundles  
Shell & Tube  
Heat Transfer Packages  
Hydronic Specialties  
Pressure Booster Systems  
Variable Speed Systems  
Expansion/Compression Tanks*

### BOBCO

*Differential Gauge Kits*

### CEMLINE CORP.

*ASME Tanks  
Boiler Blowdown Separators  
Condensate Coolers  
Hot Water Storage Heaters  
Packaged Water Heaters  
Replacement Tube Bundles  
Stone Steel Lined Tanks  
Unfired Steam Generators*

### ITT DOMESTIC PUMP

*Boiler Feed Systems  
Condensate Return Pumps  
Pressure Powered Pumps  
Vacuum Pumps*

### DOW HEAT TRANSFER FLUID

*DOWTHERM\* - Heat Transfer Fluids  
DOWFROST\* - Heat Transfer Fluids*

### FLEX-HOSE CO., INC.

*Flexible Pump Connectors  
Expansion Joints/Loops  
Expansion Compensators  
Pipe Guides*

### GRISWOLD CONTROLS

*Automatic Flow Limiting Valves  
Coil Hook-Up Kits  
Solids Separators and Filter Systems*

### GRISWOLD WATER QUALITY

*Solids Separators and Separator Systems  
Sand Filters  
Glycol Fill Systems*

### HEATFAB

*High Performance Chimneys & Vents*

### HBX CONTROL SYSTEMS

*Modular HVAC Controllers  
Geothermal/Solar Controllers  
Remote Management Software*

### ITT HOFFMAN SPECIALTIES

*Condensate Return Pumps  
Vacuum Pumps  
Steam Reducing and Control Valves  
Steam Traps, Vents & Specialties*

### ITT MCDONNELL & MILLER

*Boiler Safety Controls  
Level Controls  
Flow Switches*

### KADANT JOHNSON

*Pressure Powered Pumps  
Separation Devices  
Vacuum Breakers  
Solenoid Operated Valves*

### LAARS HEATING SYSTEMS

*Residential/Commercial Boilers  
Commercial Water Heaters  
Commercial Pool Heaters*

### MP PUMPS

*Self Priming Pumps  
High Temperature Pumps  
Engine Driven Pumps*

### NILES STEEL TANKS

*Glass Lined Storage Tanks  
Specialty Tanks*

### PETERSON EQUIPMENT CO.

*"Petes" Pressure/Temperature Test Plugs*

### PRESO

*Annular/Venturi Flow Meters*

### ROVANCO

*Pre-Insulated Pipe  
Containment Pipe*

### TOWER TECH COOLING TOWERS

*High efficiency cooling towers  
HVAC Cooling towers  
Process cooling towers  
Power generation cooling towers*

### VERTIFLO

*Pedestal Mount - Sump Pumps*

### WATTS RADIANT

*Radiant Heating Products  
Snowmelting  
Electric Radiant Heating*

### WEKSLER GLASS

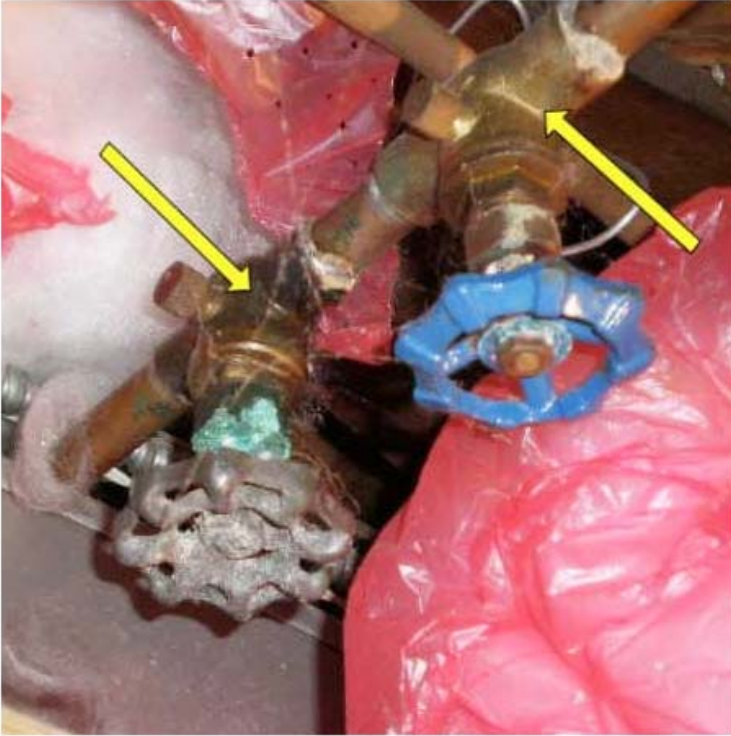
*Pressure Gauges  
Temperature Control Valves  
Thermometers*

### WESSELS COMPANY

*Custom Tanks  
Glass Lined Storage Tanks*

# COULD THIS BE THE REASON WE HAVE INSPECTORS?

## Part 1



The first one couldn't shut off the water so... let's put in a second one!



Let's put an additional trap, just to be sure.



This should be able to help the downspout handle the heavy rains.



Upside down - sideways trap. Oh hell ya, that'll work.



Out of duct tape for that leak? Why not try Electrical Tape?



Can't mount it on the roof so let's use the vent stack.



The ceiling was too low by a foot....



How about a light in the shower?

# **MASTROIANNI & ASSOCIATES, INC.**

MANUFACTURER REPRESENTATIVES OF PRODUCTS FOR THE MECHANICAL TRADES

<b><u>PACO PUMPS</u></b> .....	<a href="http://www.paco-pumps.com">www.paco-pumps.com</a>
<ul style="list-style-type: none"><li>• End Suction &amp; In-Line Centrifugal Pumps</li><li>• Horizontal Split Case</li><li>• Condensate Pumps LoNPSH Pumps</li></ul>	<ul style="list-style-type: none"><li>• Sump Pumps</li><li>• Sewage Ejectors</li><li>• Boiler Feed Pumps</li></ul>
<b><u>RUNTAL</u></b> .....	<a href="http://www.runtalnorthamerica.com">www.runtalnorthamerica.com</a>
<ul style="list-style-type: none"><li>• Architectural &amp; Custom Perimeter Heating</li></ul>	<ul style="list-style-type: none"><li>• Hot Water &amp; Steam Radiators</li></ul>
<b><u>NEXUS</u></b> .....	<a href="http://www.nexusvalve.com">www.nexusvalve.com</a>
<ul style="list-style-type: none"><li>• Combination Balance Valves</li></ul>	<ul style="list-style-type: none"><li>• Coil Piping Packages</li></ul>
<b><u>PURE HUMIDIFIER</u></b> .....	<a href="http://www.purehumidifier.com">www.purehumidifier.com</a>
<ul style="list-style-type: none"><li>• Steam &amp; Electric Self-Generating Humidifiers</li></ul>	<ul style="list-style-type: none"><li>• Gas Humidifiers</li></ul>
<b><u>VIBRATION ELIMINATOR</u></b> .....	<a href="http://www.vec0-nv.com">www.vec0-nv.com</a>
<ul style="list-style-type: none"><li>• Spring Isolators &amp; Rubber-in-Shear Isolators</li><li>• SEISMIC</li><li>• Roof Curb Isolators, Rails &amp; Bases</li></ul>	<ul style="list-style-type: none"><li>• Neoprene Pads</li><li>• Inertia Bases</li><li>• Floating Floors</li></ul>
<b><u>HYSpan/BARCO</u></b> .....	<a href="http://www.hyspan.com">www.hyspan.com</a>
<ul style="list-style-type: none"><li>• Ball Joints (For Pipe Expansion &amp; Movement)</li><li>• Venturi Flow Measuring System</li></ul>	<ul style="list-style-type: none"><li>• Portable Read-out Meters</li></ul>
<b><u>TIGERFLOW</u></b> .....	<a href="http://www.tigerflow.com">www.tigerflow.com</a>
<ul style="list-style-type: none"><li>• Domestic Water Booster Packages</li><li>• Heat Exchanger Packages</li></ul>	<ul style="list-style-type: none"><li>• Variable Flow Pump Packages</li></ul>
<b><u>THRUSH</u></b> .....	<a href="http://www.thrushco.com">www.thrushco.com</a>
<ul style="list-style-type: none"><li>• End Suction &amp; In-Line Pumps</li></ul>	<ul style="list-style-type: none"><li>• Heat Exchangers</li></ul>
<b><u>MUELLER</u></b> .....	<a href="http://www.spxvalves.com">www.spxvalves.com</a>
<ul style="list-style-type: none"><li>• Triple Duty Valves (Grooved)</li></ul>	<ul style="list-style-type: none"><li>• Suction Diffusers</li></ul>
<b><u>POLARIS</u></b> .....	<a href="http://www.polarisphe.com">www.polarisphe.com</a>
<ul style="list-style-type: none"><li>• Plate &amp; Frame Heat Exchangers</li></ul>	
<b><u>VALUE ENGINEERED PRODUCTS</u></b> .....	<a href="http://www.valueng.com">www.valueng.com</a>
<ul style="list-style-type: none"><li>• Insulated Pipe Inserts</li></ul>	
<b><u>METRAFLEX</u></b> .....	<a href="http://www.metraflex.com">www.metraflex.com</a>
<ul style="list-style-type: none"><li>• Flexible Connectors: Rubber, Stainless Steel &amp; Teflon</li><li>• Expansion Joints &amp; Compensators</li><li>• MetraLoops &amp; FireLoops</li><li>• MetraSeals &amp; FireSeals (pipe to wall seals)</li></ul>	<ul style="list-style-type: none"><li>• Pipe Guides</li><li>• Check Valves</li><li>• Air Vents</li><li>• Strainers</li></ul>
<b><u>JOHN WOOD CO.</u></b> .....	<a href="http://www.johnwood.com">www.johnwood.com</a>
<ul style="list-style-type: none"><li>• Air Separator</li></ul>	Expansion Tanks

Website: [www.mastroiannihvac.com](http://www.mastroiannihvac.com)

**Please Contact:**

**Frank Mastroianni**

[fmastroianni@mastroiannihvac.com](mailto:fmastroianni@mastroiannihvac.com)

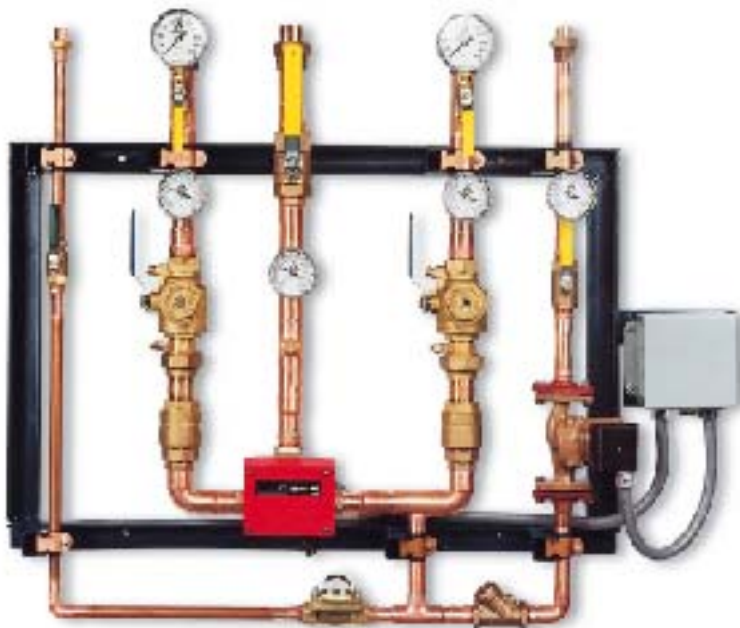
7601 FIRST PLACE DR. STE A13 \* CLEVELAND, OHIO 44146 \* (440) 786-1100 FAX 786-1103

WE TOOK THE THERMOSTAT OUT AND PUT IN

# THE BRAIN.

See The Brain™ at work at [www.armstrong-intl.com/aspe](http://www.armstrong-intl.com/aspe)

GO



**UNPARALLELED HOT-WATER TEMPERATURE CONTROL IN AN ELECTRONIC MIXING CENTER (EMC) THAT PLAYS IT SMART AND SAFE.**

When you actually see it perform live, you'll change the way you think about central hot-water distribution systems. Designed specifically to provide  $\pm 2^{\circ}\text{F}$  recirculation system control during zero-demand idling periods, our EMC also delivers remarkable performance across the full diversity of hot water use. And it has no minimum system draw-off requirement. With remote programming and control features, and building automation system interface capability built into the mixing unit, the EMC offers an unparalleled portfolio of valuable benefits. We don't just say it; we'll prove it to you online. Log on to [www.armstrong-intl.com/aspe](http://www.armstrong-intl.com/aspe) today and sign up for a live guided tour.

**Omar McDowell Co.**

Sales - Consulting - Service

Since 1912

OHIO • NEW YORK

Westlawn Square

25109 Detroit Road, Suite 320

Westlake, Ohio 44145

Ph: 440-808-2280 • 440-808-2266



**Armstrong®**  
Intelligent System Solutions™

STEAM • AIR • HOT WATER



## LAKESIDE SUPPLY COMPANY

3000 West 117<sup>th</sup> Street • Cleveland, OH 44111-1667

(216) 941-6800 • Fax (216) 941-8408 or (216) 941-1746

1-800-537-1234 • [www.lakesidesupply.com](http://www.lakesidesupply.com) • [sales@lakesidesupply.com](mailto:sales@lakesidesupply.com)

### PIPE

Steel - Black, Galv, PE, T & C  
Grooved and Seamless  
Soil - SW, No Hub  
Copper - K, L, M, DWV  
Refrigeration  
Gas - EOG, COLUMBLA  
PVC - 40, 80, DWV, CPVC, Sewer  
Flowguard Gold, CPVC  
Pex  
Stainless Steel  
Brass  
Clay  
IPEX - Enfield Mech. Joint  
Enfusion  
Empure

### FITTINGS

DIXON-CAM & Groove Specialty Items  
Malleable, Cast Iron  
Forged Steel - Thrd, Socket Weld  
Soil, SW, No Hub  
VICTAULIC - Grooved, Pressfit, No-Sweat  
Copper, Cleaned for Oxygen  
VIEGA ProPress  
Gas - EOG, COLUMBLA  
PVC - 40, 80, DWV, CPVC, Sewer  
Flowguard Gold, CPVC  
Pex  
Stainless Steel  
Brass - Thrd, Comp, Flare, Hose  
Clay  
IPEX - Enfield Mech. Joint  
Enfusion  
Empure  
Butt Weld, Carbon, Stainless, Aluminum

### COUPLINGS

JCM  
CLAMP-ALL  
DRESSER  
FERNCO/MISSION  
STEEL  
SKINNER/TELSCO

### GROOVED FITTINGS *or* VALVES

VICTAULIC - Grooved, FIT, Copper, Pressfit

### FIRE PREVENTION

VICTAULIC - Firelock Fittings, Sprinkler Heads,  
Alarm Valves, Devices, Firelock CPVC Pipe  
and Fittings  
Light Wall Steel Pipe  
POTTER ROEHMER - Fittings and Cabinets

### GAS PIPE, FITTINGS & VALVES

COLUMBLA & EAST OHIO GAS - Meter Bars &  
Gas Manifolds  
ACTARIS - Gas Regulators and Meters  
Central Plastics  
Performance - Gas Pipe and Fittings  
Rockwell - Poly Gas Valves NORMAC  
- Fittings PERFECTION CORP. X-TRU  
COAT - Steel Pipe DRESSER APPT -  
Gas Test Equipment

### GAUGES, THERMOMETERS & CONTROLS

TREXICE  
SPENCE

### VALVES & ACCESSORIES

MILWAUKEE - Bronze, Ball, Iron, Butterfly, High  
Performance Butterfly  
STOCKHAM - Bronze, Ball, Iron, Butterfly  
VICTAULIC -- #300, #700, Ball, Check  
RESUN - Plug  
HAYWARD - PVC/TU, Ball, Check, Single Entry,  
Strainers  
JOMAR - Ball, Add-a-Valve  
EVERLASTING - Boiler Blow Down  
A. Y. McDONALD - Gas & Steam Cocks  
WATTS  
ANVIL BALL  
BONNEY FORGE  
FIRE PROTECTION - Valves and Trim  
BABBITT-Sprockets

### HANGERS, SUPPORTS

SUPERSTRUT - Kindorf Channels & Supports  
ANVIL  
EMPIRE  
MINERALLAC  
DIXON - Hose Clamp  
SUMNER MFG - Pipe Supports, Pipefix, Stakfix,  
Posifix HOLDRITE PIPE-  
TYTES Angle Iron & Channel  
Iron SPEEDY ERICO

### TUBULAR BRASS & PLASTIC

P-Traps, Tailpieces, Strainers  
Desanco Fittings Lav & Closet  
Supplies Angle & Straight  
Valves

### MISCELLANEOUS

Water Filters & Softeners BRADY - Pipe  
Markers, Valve Tags HANDLEY - Valve &  
Curb Boxes Gaskets, Oarlock, Granite, Spiral  
Wound Pipe Insulation, Heating Tape and  
Fittings Pipe Sleeves, Link Seals

### DRINKING FOUNTAINS &

#### EMERGENCY WASH EQUIPMENT

HALSEY TAYLOR ELEKAY Drinking Fountains  
SPEARMAN MFG Emergency Eye-Wash  
BRADLEY Wash Fountains, Drinking Fountains  
HAWS MFG EBEO- OASIS

### HEATERS - RESIDENTIAL *or* COMMERCIAL

A. O. SMITH  
AMTROL EXPANSION TANKS  
Storage Tanks  
IN-SINK-ERATOR  
Coil Type Heaters  
Instantaneous Water Heaters  
CHRONOMITE

### ROOF *S/* FLOOR DRAINS

WADE  
CARRIERS  
J. R. SMITH  
JOSAM  
ZURN  
EAST JORDAN SEWER GRATES

### FAUCETS & PARTS

MOEN  
CHICAGO  
ELJER  
DELTA  
CENTRAL BRASS  
WOODFORD ANTI-FREEZE  
SYMMONS  
POWERS  
LEONARD

### HOT WATER - STEAM CONTROLS

SPENCE - Traps, Control Valves, Regulators  
TRESICE - Gages, Controls & Thermometers  
MCDONNELL & MILLER - Boiler controls  
AMTROL - Tanks & Fittings  
DANFOSS - Controls  
BARNES & JONES - Traps, Repair Parts

### FIXTURES *or* ACCESSORIES

ELJER  
CRANE - Lav, Toilet  
ELEKAY  
OLSONITE SEATS  
JUST-SS Sinks  
IN-SINK-ERATOR - Disposals  
SLOAN - Flush Valve & Parts  
DELANY - Flush Valve & Parts  
E. L. MUSTEE - Laundry Trays, Mop Basins,  
Durastall Showers  
ACORN - Parts ZURN - Flush  
Valve & Parts FLAT - Fixtures  
BRADLEY - Sinks & Fixtures

### TOOLS

RIDGE TOOL  
PROTO  
MILWAUKEE TOOL  
MARCO  
LENOX  
CHAMPION  
REED MFG  
WHEELER-REX  
SUMNER MFG  
RAWL  
JET-SWET  
COBB PIPE FREEZING  
PASCO SPECIALTY TOOLS  
CHERNE TEST BALLS  
CHANNELLOCK  
GOSS TORCHES  
TURBOTORCH  
VERMETTE  
Street Keys  
Grinding Wheels & Brushes  
Extension Cords & GFIs

### TOOL RENTALS

VICTAULIC - Grooving Machine  
ENFUSION TOOL  
ENFURE TOOL  
MCELROY FUSION GAS MACHINES  
RIDGE PROGRESS

### SERVICES

Valve Automation Electric and  
Pneumatic Lakeside Managed  
Store Rooms

## **ASPE AND ICC JOIN TO PROMOTE SAFE PLUMBING SYSTEMS WORLDWIDE**

The American Society of Plumbing Engineers (ASPE), one of the largest and most respected plumbing engineering organizations in the world, has signed its first Memorandum of Understanding (MOU) ever in its 46-year history. The MOU with the International Code Council calls for both organizations to use their knowledge and expertise to advance and promote the design, specification, and inspection of plumbing systems. Both groups indicate that a combined expertise of plumbing codes and engineering leadership can accomplish more than either organization could achieve individually.

This collaboration will identify and promote new and existing sustainability opportunities and services, supporting cooperative standard and code development that will benefit the entire plumbing industry. ICC and ASPE also will develop products and services for their members and the industry, support initiatives that advance global safe water and sanitation, and cross-promote select plumbing-related products and services of each organization.

"This partnership speaks volumes about the direction the plumbing industry seeks to go and how each of our memberships holds the other's expertise in high regard," said Jay Peters, ICC PMG Group's Executive Director. "We are very excited about this union and look forward to partnering with ASPE on initiatives that will benefit our respective members, bring nationwide uniformity to code enforcement, and enhance the entire realm of plumbing, sanitation and sustainability globally."

Co-op educational programs, conferences, and trade shows will be conducted, along with cross-promotion of codes, standards, and related publications. The agreement also calls for initiatives related to chapter resources, technical initiatives, committees, and councils to increase and improve the level of education, communication, and overall value for ASPE and ICC members.

"For years, ASPE members have played a critical role in developing the International Plumbing Code," according to Stanley Wolfson, ASPE's Executive Director. "A sound technical and enforceable code adopted nationwide can only result in greater public safety and consistency in enforcement and design, all of which result in positive benefits for our members."

These broader, stronger, member-focused attributes will benefit the partners' collective memberships tremendously, according to Peters and Wolfson. Each organization has unique memberships with various types of expertise that will benefit the plumbing industry.

### **About ASPE**

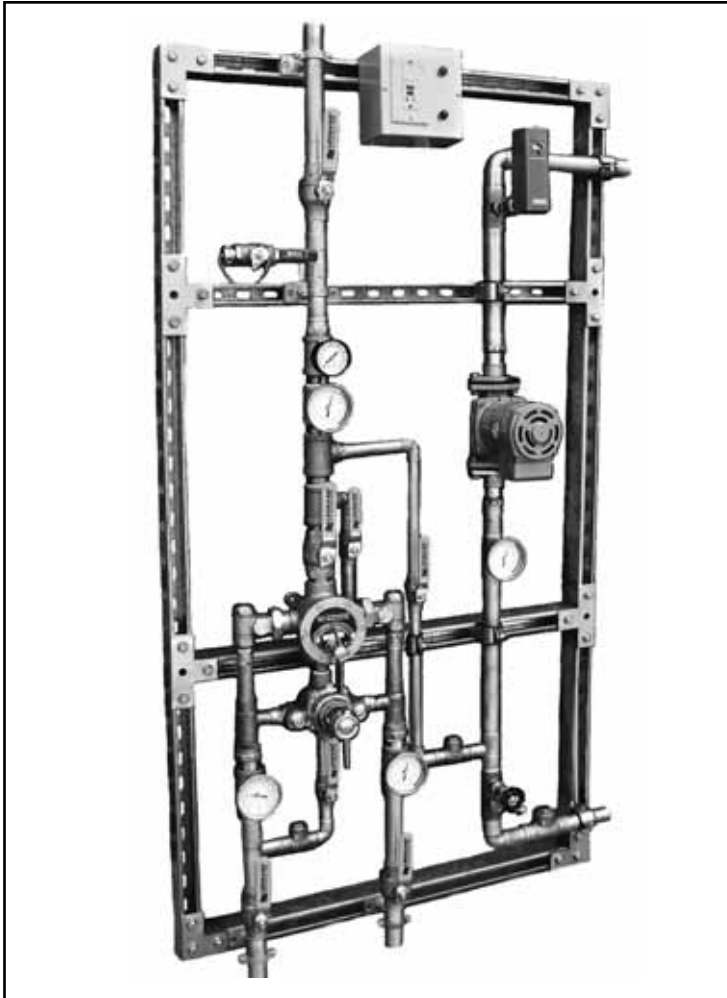
The American Society of Plumbing Engineers (ASPE) was founded in 1964 as an organization dedicated to the advancement of the plumbing engineering profession. The Society disseminates technical data and information, sponsors activities that facilitate interaction with fellow professionals, and, through research and education, expands the base of knowledge of the plumbing engineering industry. Its 7,000 members on five continents represent an extensive network of experienced engineers, designers, contractors, code officials, manufacturers, and manufacturer representatives interested in advanced their careers, their profession, and the industry. Contact ASPE for additional information at 847-296-0002, [info@aspe.org](mailto:info@aspe.org) or visit [www.aspe.org](http://www.aspe.org).

### **About ICC**

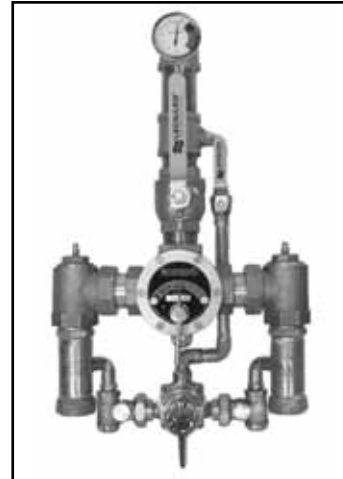
The International Code Council (ICC) publishes building safety, fire prevention and energy efficiency codes that are used in the construction of residential and commercial buildings. Most U.S. cities, counties and states choose the I-Codes based on their outstanding quality. The ICC's Plumbing, Mechanical and Fuel Gas (PMG) Group is devoted exclusively to providing PMG products and support to jurisdictions and construction industry professionals across the country and around the globe, with one or more PMG code adopted in 49 states. The more than 200 superior products and related services were developed specifically by and for plumbing and mechanical professionals. Contact the PMG Group for additional information at 1-888-ICC-SAFE, x4PMG, [pmgresourcecenter@iccsafe.org](mailto:pmgresourcecenter@iccsafe.org) or visit [www.iccsafe.org](http://www.iccsafe.org).

# More Choices

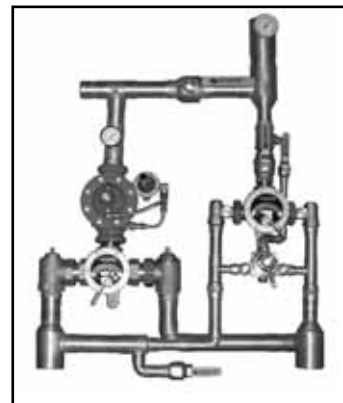
because water temperature control is all we do.



**MEGATRON® Complete Water Temperature Control Stations in Seven Models!**



**New Generation High Low Systems in Six models!**



**High Capacity Manifold Systems in Seven Models!**

At Leonard Valve, water temperature control is not a sideline, it's our lifeline. Since 1913 we have been the leader in water temperature controls and because that's all we do, no one offers more choices, more quality or more reliability.

All products are pre-assembled and pre-tested with Leonard's exclusive DURA-trol® solid bimetal thermostatic control, Automatic 7 Year Thermostat Warranty, CASPAK® sizing, and on-phone, on-line, on-site technical support. Visit our website for more information.



BWA South Co. • Cleveland Office • 1-800-888-0032  
Scott Ohnmeis • Larry Taylor

# More Tepid Choices....

because water temperature control is all we do.

## Single Models with Integral Cold Water By-Pass



Eye/Eye Face Wash



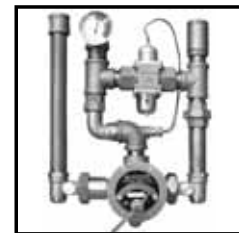
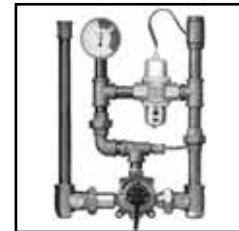
Multiple Eye/  
Eye Face Wash

Single Drench/  
Combination Shower



Multiple Drench/  
Combination Showers

## Redundant Models with Integral Cold Water By-Pass and Temperature Override Protection



All Leonard Emergency mixing valves meet ANSI Z358.1/2004 requirements, providing tepid water to emergency showers and eyewash equipment. Systems feature the DURA-trol® solid bimetal thermostats which are not subject to rupture, fatigue or loss of power, high temperature limit

set at 90°F (32°C), locked temperature regulator set for 85°F (29°C). Eight sizes, sixteen basic models to choose from. At Leonard, water temperature control is not a side-line, it's our lifeline. Since 1913 we have been the leader in water temperature control.





107 Cypress Street S.W. Reynoldsburg, OH 43068  
 phone: 740.927.6880 or 888-927-4244 fax: 740.927.4545

[www.RepSourceLLC.com](http://www.RepSourceLLC.com)

Manufacturers Representatives Serving Plumbing, Mechanical, Architectural and Water Treatment Industries with Offices in Columbus, Cleveland and Cincinnati  
 Representing the following product lines:

## Northern Ohio Market

<b>A Better Idea, Inc.</b> <a href="http://www.abetterideainc.com">www.abetterideainc.com</a>	<i>E-Z Sleeper / Quick Block</i> – Rooftop pipe support blocks
<b>ABT – Polydrain</b> <a href="http://www.abtdrains.com">www.abtdrains.com</a>	Pre-sloped polymer trench drains, <i>Trench Former</i> – pre-sloped trench drains systems.
<b>American Plumber</b> <a href="http://www.americanplumber.com">www.americanplumber.com</a>	Sediment cartridge filters, drinking water systems, water softeners, media filters, point of use filters and specialty filters.
<b>Aqua Glass</b> <a href="http://www.aquaglass.com">www.aquaglass.com</a>	Acrylic and gelcoat fiberglass shower stalls, bathtubs, soaking tubs, whirlpools, multi-piece, special care, wall kits and laundry tubs for residential, commercial and institutional.
<b>Bermad</b> <a href="http://www.bermad.com">www.bermad.com</a>	Automatic control valves for: pressure reducing, fire protection control, pressure relief, pump control, float, check, altitude, flow and hydrometers.
<b>Bosch Pro Tankless Water Heaters</b> <a href="http://www.boschpro.com">www.boschpro.com</a>	Tankless instantaneous water heaters. Wall hung hydronic boilers.
<b>Bosch Tools</b> <a href="http://www.boschtools.com">www.boschtools.com</a>	Corded and cordless power tools and accessories including the following products for the professional contractor: <i>Bosch, Skil, Dremel, Roto-Zip, Litheon</i> .
<b>Bradley Corporation</b> <a href="http://www.bradleycorp.com">www.bradleycorp.com</a>	Washfountains, <i>Express</i> and <i>Frequency</i> lavatory systems, <i>Ndite</i> technology, <i>Navigator</i> thermostatic mixing valves, showers, safety equipment, metering faucets, security fixtures, patient care units, <i>Terreon</i> solid surface products.
<b>Creative Industries</b> <a href="http://www.creative-terrazzo.com">www.creative-terrazzo.com</a>	Pre-cast terrazzo shower floors, mop basins, concrete laundry tubs and stairs or benches, terrazzo or concrete or glass counter tops and custom terrazzo products.
<b>Eemax / HHP Home Heating Products</b> <a href="http://www.eemaxinc.com">www.eemaxinc.com</a> <a href="http://www.hhproductsinc.com">www.hhproductsinc.com</a>	Electric Instantaneous water heaters, DI and booster heaters, emergency shower eyewash heaters, <b>Home Heating Products</b> <i>Thermostone</i> decorative towel warmers and room heating stones, <i>Solar Shower</i> solar powered outdoor shower system.
<b>Marlo</b> <a href="http://www.marlo-inc.com">www.marlo-inc.com</a>	Commercial & industrial water softeners, media filters, reverse osmosis, dealkalizers and deionized water treatment equipment.
<b>Mifab</b> <a href="http://www.mifab.com">www.mifab.com</a>	Cast iron floor drains, floor sinks, roof drains, cleanouts, carriers, interceptors, hydrants, shock absorbers, trap primers, backwater valves, access doors, no-hub couplings, pipe markers, roof blocks, <i>Proformer</i> modular trench drain system, <i>Beeco</i> backflow's and prv's.
<b>Moen Commercial</b> <a href="http://www.moencommercial.com">www.moencommercial.com</a>	Commercial, industrial & institutional faucets and fittings. <i>FreeHand</i> sensor operated flush valves and faucets.
<b>Plumberex</b> <a href="http://www.plumberex.com">www.plumberex.com</a>	<i>Pro-Extreme, Trap Gear, Handy Shield Maxx</i> and <i>Clear Shield</i> lavatory trap and riser insulation kits. <i>Mushroom Flange and Floor Sink Carrier</i> specialty products.
<b>Proceptor / Green Turtle</b> <a href="http://www.proceptor.com">www.proceptor.com</a>	Fiberglass oil, grease, and solids interceptors with 30-year bonded warranty, available as decontamination or storage tank, double wall, leak detection and level sensing. <i>PHIX</i> acid neutralization systems. <i>Retroceptor</i> kitchen and <i>Microceptor</i> coffee grinds interceptors.
<b>Pro-Grit Products</b> <a href="http://www.pro-gritproducts.com">www.pro-gritproducts.com</a>	Open Mesh Sand Cloth that is rugged, durable and will last longer than other abrasive products. Each 10 yard roll is 180 grit and comes in four highly visible fluorescent colors.
<b>Raychem / Tyco Thermal Controls</b> <a href="http://www.tycothermal.com">www.tycothermal.com</a>	<i>HWAT-Plus</i> self-regulating heating cable system for domestic hot water, <i>XL-Trace</i> freeze protection cable, <i>Pyrotex MI</i> and <i>Electromelt</i> snow and anti-icing cable, <i>IceStop</i> roof and gutter de-icing cable, <i>RaySol</i> floor warming and freezer frost heave cable, <i>QuickNet</i> floor heating cable.
<b>Schott Scientific Glass / Kimax</b> <a href="http://www.us.schott.com/drainline">www.us.schott.com/drainline</a>	Glass piping for acid waste and containment piping systems. <i>Knight-Ware</i> acid neutralizing sumps.
<b>Water Control Corporation</b> <a href="http://www.watercontrolinc.com">www.watercontrolinc.com</a>	Rainwater Reclamation Systems with Ultraviolet or Ozone purification, vortex downspout separators, storage tanks and complete controls for turnkey systems.
<b>Waterless Company</b> <a href="http://www.waterless.com">www.waterless.com</a>	<i>Waterless</i> “No Flush” vitreous china and fiberglass urinals with <i>EcoTrap</i> and <i>Blue Seal</i> liquid. <i>UTC Sentinel</i> sensor flushing systems. <i>Everprime</i> floor drain trap primer liquid. <i>Signature</i> and <i>Greenclean</i> chemicals.
<b>Additional Products Distributed:</b> <a href="http://www.repsourcecell.com">www.repsourcecell.com</a>	Bathroom Partitions (solid plastic, baked enamel, stainless steel, laminate and phenolic), Bathroom Accessories, Lockers (solid plastic and metal), Wall and Corner Guards, Wall Covering and Handrail, Cubicle Track and Curtains, Entrance Flooring, Building Louvers-Grilles-Sunshade, Interior and Exterior Expansion Joints, Water Treatment Products.

**Odorless.  
Worryless.  
Costs less.**



**LEED®  
Applicable!**

# **WATERLESS™**

*No-Flush™ Urinals*



## **RETROFIT / NEW CONSTRUCTION**

- Lowest Long Term Cost
- Most Simple System
- Longest Installation History
- No Overflows
- Reduces Waste Volume
- Reduces Vandalism

PROFESSIONAL CONSERVATION™, SINCE 1991

## **RepSource, LLC**

107 Cypress Street S.W., Reynoldsburg, OH 43068

**740.927.6880** or **888.927.4244**

[www.waterless.com](http://www.waterless.com)



*Finally -  
A Simple Solution  
to an Age Old  
Plumbing Problem*

**EVERPRIME®**

*Simply Add It ...and Forget It!*

Works great in unused floor and shower drains, sinks and water fountains, toilets/urinals, condensate drains and other unprimed or unused drains.

**Yep, it's that good!**

# Dual Flush OPTIMIZED

With the only IAPMO-listed dual-flush commercial bowl  
on the market today



Sloan SOLUS®  
Dual-Flush  
Solar Powered  
Flushometer

Sloan ECOS®  
Dual-Flush  
Battery Powered  
Flushometer

UPPERCUT®  
Dual-Flush  
Manual  
Flushometer

Dual-flush systems are  
among the many Sloan  
products that meet the  
Buy American Act.

Choose Sloan to help earn LEED® credits.

For a free LEED Qualification Guide,  
call 866-663-2289 or download at  
[www.sloanvalve.com](http://www.sloanvalve.com)



**ADCO Sales Inc.**  
440-944-7500

**SLOAN.**  
The Water Efficiency Company



# Trombold

Equipment Company

our website: [www.trombold.com](http://www.trombold.com)

*If you need to move water call  
us we can help!*

*Storm and sewage—Weil  
Domestic boosters - Quantum Flo  
Fire—Patterson*

Phone 216-663-8700 Fax 216-663-8702

## CLEVELAND: It'll Rock You.



American Society of Plumbing Engineers  
Cleveland Chapter  
PO Box 5962  
Cleveland, Ohio 44101-0962

\*\* Local Chapters are not authorized to speak for the Society